

CERTIFICATE OF LOCATION OF GOVERNMENT CORNER

EAST QUARTER Corner of Section 05, Township 41, Range 24, 4TH P.M.

STATE OF MINNESOTA, County of KANABEC

At the corner location shown on the sketch:
IN 2006 FOUND THIS CORNER
AND ESTABLISHED KANABEC COUNTY COORDINATES ON ITS LOCATION.

Kanabec County U.S. Survey Feet Coordinates
NAD 1983, HARN 1996 Adjustment
Obtained by RTK GPS Observation

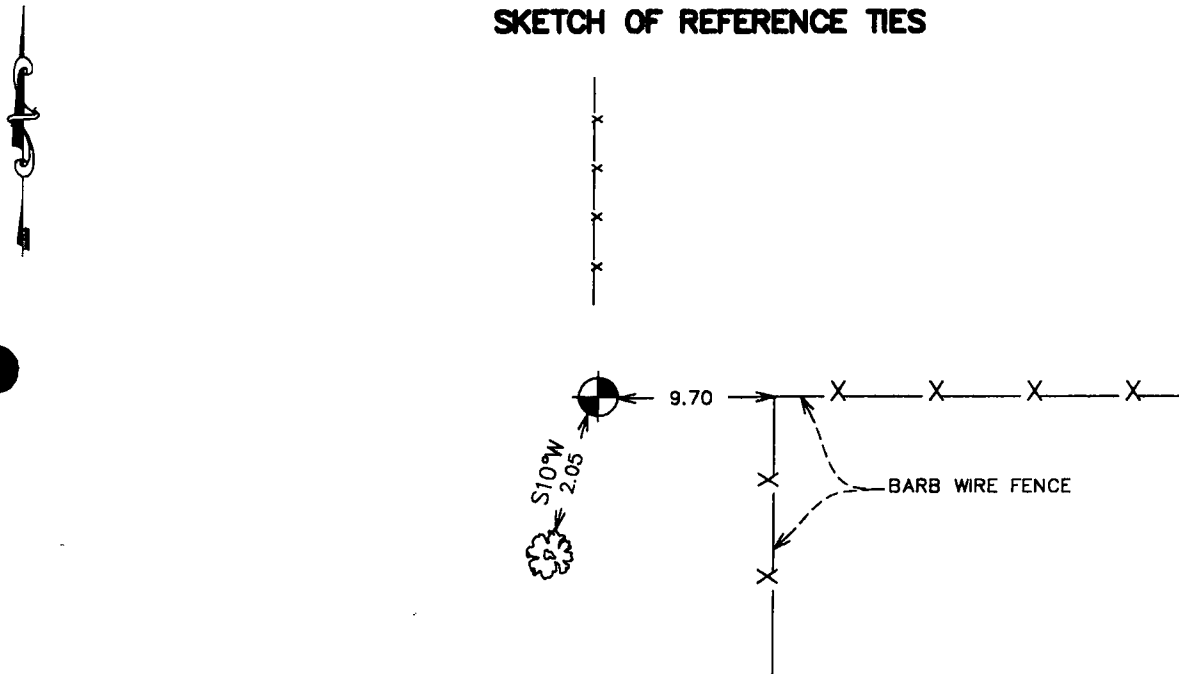
Northing= 221392.53

Easting= 375639.00

Note: NAD 1983, HARN 1996 Adjustment
coordinates are NOT compatible with
NAD 1983 coordinates

Note: 1 Meter=3937/1200 U.S. Survey Feet

SKETCH OF REFERENCE TIES



Statement of evidence relative to this corner location is on back of page.

I hereby certify that this document and the data contained herein was prepared by me or under my direct supervision.

Ernest J. Rud Signature July 15, 2006 Date

Registration No. Minn No. 9808

Land Surveyor, Professional Engineer

County Surveyor, County Engineer

OFFICE OF THE COUNTY RECORDER

County of Kanabec

I hereby certify that this document was filed in the County Recorder's office at 8:00 A.M. on the

20th day of July A.D., 2006

County Recorder Rhonda Olson

BY _____ Deputy

DOCUMENT NO. _____

STATEMENT OF EVIDENCE

THIS CORNER WAS SET BY DEPUTY SURVEYOR ISAAC BANKER IN DEC. 1855. A POST WAS SET AND TIED TO TWO BEARING TREES. NO EVIDENCE OF CORNER OR BEARING TREES REMAIN.

THERE IS A ROAD OPENING ON FILE AT KANABEC CO. AUDITORS OFFICE ALONG THE EAST LINE OF SECTION 5 DATED 1914. NO RECORD OF THIS ROAD BEING SURVEYED. THIS CORNER FALLS ON THE CENTERLINE OF AN OLD NORTH-SOUTH ROAD BED AND FENCE GOING EAST AND WEST. IN 1989 JEFF CAINE RLS #12251 DID A SURVEY AROUND SECTIONS 4, 5 AND 6 AND SET A 1/2" IRON PIPE AT THIS LOCATION. IT IS ON LINE WITH AN OLD FENCE GOING NORTH AND THE FENCES GOING EAST AND WEST.

IN JANUARY 2006 E.G. RUD RAN A SURVEY AROUND SECTIONS 1 through 6 TO LOCATE EXISTING MONUMENTATION AND LINES OF OCCUPATION. WE ACCEPTED THE 1/2" IRON PIPE AS THE LOCATION FOR THE QUARTER CORNER. IT IS IN HARMONY WITH THE LINE OF OCCUPATION BEING USED FOR YEARS. WE TOOK TIES AND ESTABLISHED KANABEC CO. COORDINATES ON THIS POSITION.