

CERTIFICATE OF LOCATION OF GOVERNMENT CORNER

NORTH QUARTER Corner of Section 9, Township 41, Range 24, 4TH P.M.

STATE OF MINNESOTA, County of KANABEC

At the corner location shown on the sketch:
On 05/07/2003 Set a Kanabec County Monument.

Kanabec County U.S. Survey Feet Coordinates
NAD 1983, HARN 1996 Adjustment
Obtained by RTK GPS Observation

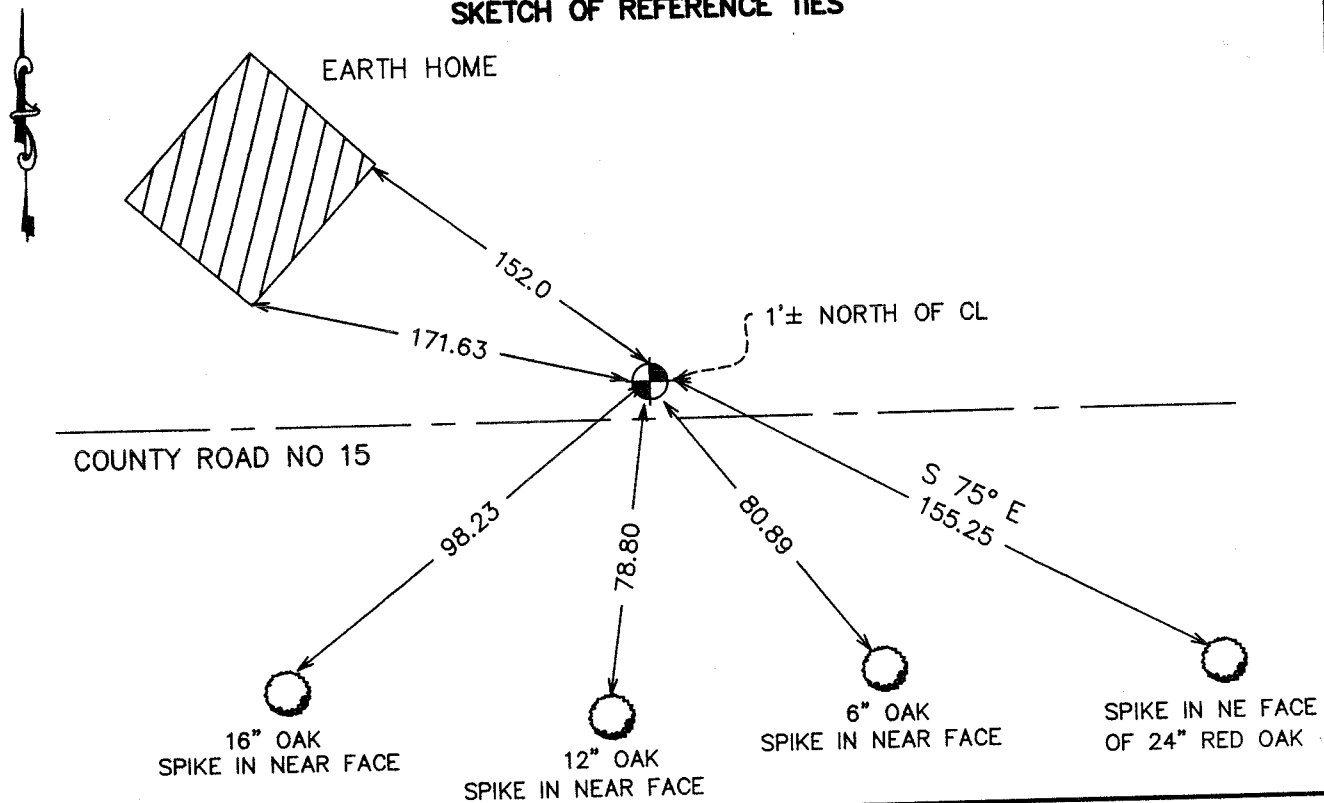
Northing= 218644.43

Easting= 378230.56

Note: NAD 1983, HARN 1996 Adjustment
coordinates are NOT compatible with
NAD 1983 coordinates

Note: 1 Meter=3937/1200 U.S. Survey Feet

SKETCH OF REFERENCE TIES



Statement of evidence relative to this corner location is on back of page.

I hereby certify that this document and the data contained herein was prepared by me or under my direct supervision.

Ernest Reid
Signature

9-1-2004
Date

Registration No. 9808

- Land Surveyor, [] Professional Engineer
- [] County Surveyor, [] County Engineer

OFFICE OF THE COUNTY RECORDER

County of _____

I hereby certify that this document was filed in the County Recorder's office at _____ M. on the _____ day of _____ A.D., 20____

County Recorder _____

BY _____ Deputy

DOCUMENT NO. _____

STATEMENT OF EVIDENCE

FROM TIE SHEET 863

All of the original government bearing trees are now gone.

There is a road petition on file in the County Auditor's Office, dated April 29, 1899, for a town road to begin at the quarter post between Section 4 and 9, Township 41, Range 24, thence running west on the section line.

There is a Supervisor's Road Order on file at the County Auditor's Office, dated November 28, 1902, for a town road beginning at the north quarter corner of Section 9, Township 41, Range 24, thence running east 39.28 chains to the northeast corner of Section 9, Township 41, Range 24, thence south to the southeast corner of Section 21, Township 41, Range 24. This supervisor's Road Order was surveyed by John Nelson, a former county surveyor. A description he wrote, dated January 29, 1903, states that he found a good government corner at the north quarter corner of Section 9, Township 41, Range 24.

On November 11, 1992, we made a survey along the north and east lines of Section 9, Township 41, Range 24, and adjoining sections to locate existing monuments, lines of occupation and establish search areas.

On November 24, 1992, we made a 13' by 15' by 15' excavation with a backhoe at the centerline of County Road No. 15 and the extension of the fence line north. We found a 5/8" by 10" bolt down 10 feet below the road surface, about 6" below an old road bed, 6 feet north of the centerline of the present road and 6 feet east of the fence line north extended south.

We accepted this location as the perpetuated location of the original corner per John Nelson's records.

2003

On May 7, 2003, we set a Kanabec County Monument based on ties and mathematical information from M.B. Rude's survey dated 12-7-92 for the Kanabec County Highway Department. We established Kanabec County coordinates using GPS equipment.