

# CERTIFICATE OF LOCATION OF GOVERNMENT CORNER

NORTHEAST Corner of Section 8, Township 41, Range 24, 4TH P.M.

STATE OF MINNESOTA, County of KANABEC

At the corner location shown on the sketch:  
On 05/07/2003 Set a Kanabec County Monument.

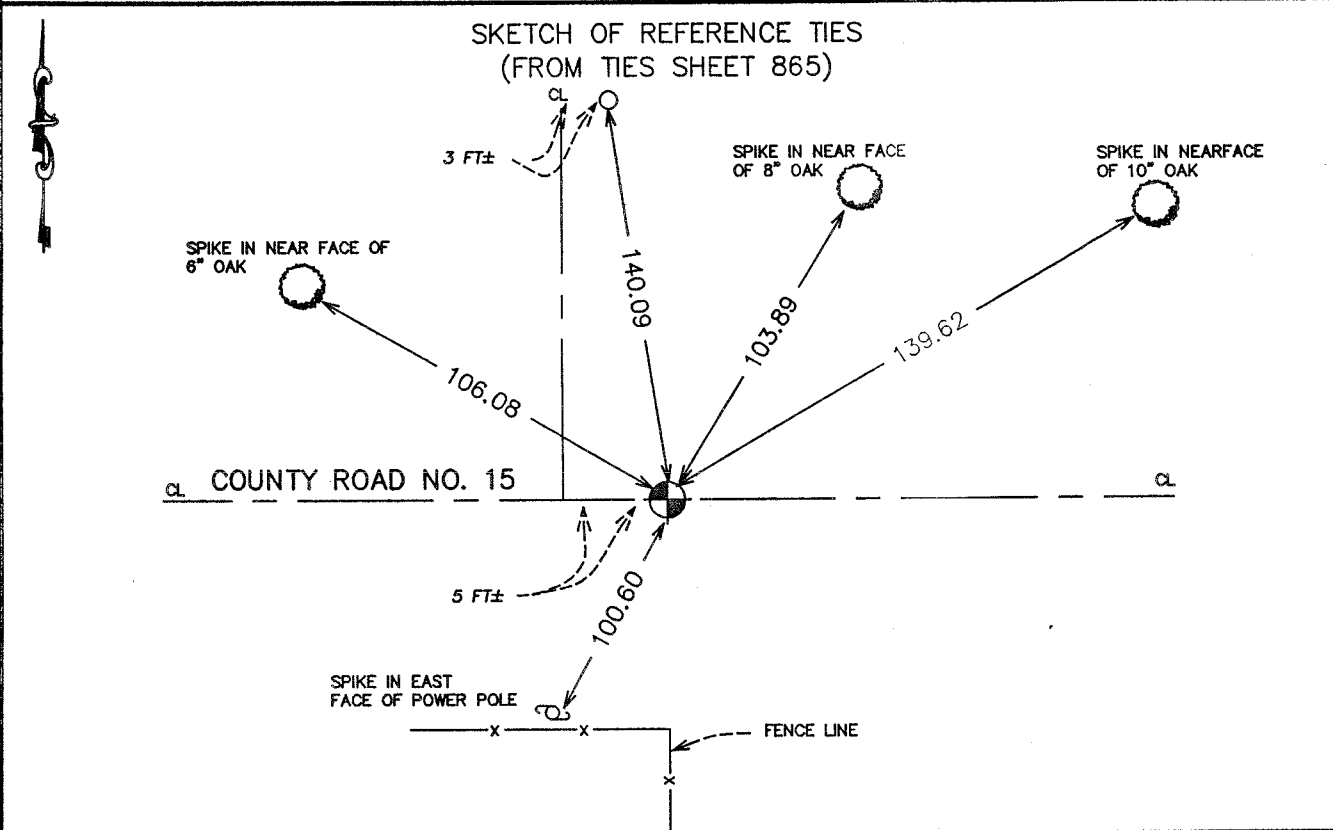
Kanabec County U.S. Survey Feet Coordinates  
NAD 1983, HARN 1996 Adjustment  
Obtained by RTK GPS Observation

Northing= 218759.231

Easting= 375660.715

Note: NAD 1983, HARN 1996 Adjustment  
coordinates are NOT compatible with  
NAD 1983 coordinates

Note: 1 Meter=3937/1200 U.S. Survey Feet



Statement of evidence relative to this corner location is on back of page.

I hereby certify that this document and the data contained herein was prepared by me or under my direct supervision.

*Ernest J. Reed*  
Signature

7-17-2004  
Date

Registration No. 9208

Land Surveyor,       Professional Engineer

County Surveyor,       County Engineer

### OFFICE OF THE COUNTY RECORDER

County of \_\_\_\_\_

I hereby certify that this document was filed in the County Recorder's office at \_\_\_\_\_ M. on the \_\_\_\_\_ day of \_\_\_\_\_ A.D., 20\_\_\_\_

County Recorder \_\_\_\_\_

BY \_\_\_\_\_ Deputy

DOCUMENT NO. \_\_\_\_\_

STATEMENT OF EVIDENCE  
(FROM TIE SHEET 865)

All of the original bearing trees are now gone.

There is a town road order on file at the County Auditor's Office dated April 29, 1899, for a town road starting at the north quarter corner of Section 9 and running west along the north line of Sections 9, 8, and 7; and a town road order on file at the County Auditor's Office dated August 1, 1914, which calls for a town road starting at the northeast corner of Section 8 and running north on the section line between Sections 4 and 5, to the southeast corner of Section 32, Township 42, Range 24.

In November of 1992, we ran a survey along the north line of Sections 7, 8, and 9 to locate existing monuments, lines of occupation, and search areas.

There is an existing road along the north line of Sections 7, 8, and 9, and an old trail and road bed at this corner.

Ira Nutt, a land owner southeast of this corner, stated there was a stone marked with a "+" at this corner (at the extension of the fence line to the south), but it was removed in road construction about 15 years ago. The road has been cut about 15 to 20 feet in this area.

Jeff Caine, a Land Surveyor, in a survey of Section 5, set a spike at the intersection of the east-west road and fence line south, extended north, and trail north, extended south.

We found the spike set by Jeff Caine and accepted it as the perpetuated location of the original corner.

No excavation was made, because all evidence was destroyed when the road was cut.

The government distance east to the center line of the creek is 501.6 feet and we measured 492 feet, plus or minus, to the centerline of bridge.

(2003)

On May 7th, 2003, we reset a Kanabec County monument using ties and mathematical information from survey by M.B. Rude dated 12-7-92 for the Kanabec County Highway Department. We established Kanabec County coordinates on this position using G.P.S. equipment.