

# CERTIFICATE OF LOCATION OF GOVERNMENT CORNER

EAST QUARTER Corner of Section 08, Township 41, Range 24, 4TH P.M.

STATE OF MINNESOTA, County of KANABEC

At the corner location shown on the sketch:  
SET #7 REBAR WITH ALUMINUM CAP  
AND ESTABLISHED G.P.S. COORDINATES ON ITS LOCATION.

Kanabec County U.S. Survey Feet Coordinates  
NAD 1983, HARN 1996 Adjustment  
Obtained by RTK GPS Observation

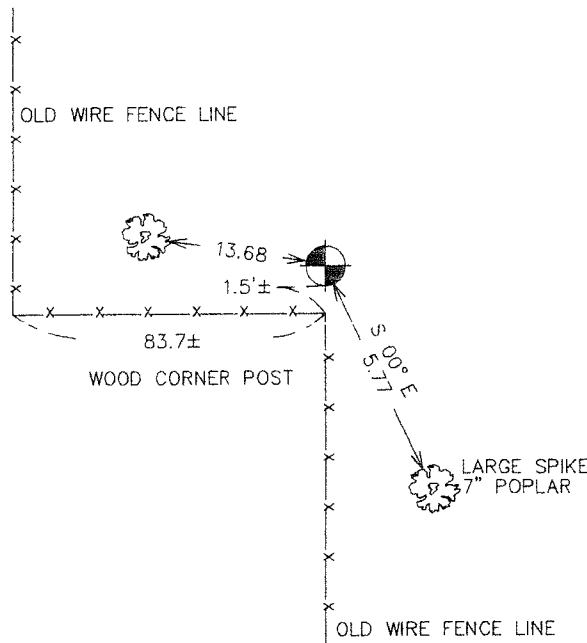
Northing= 215862.475

Easting= 375506.115

Note: NAD 1983, HARN 1996 Adjustment  
coordinates are NOT compatible with  
NAD 1983 coordinates

Note: 1 Meter=3937/1200 U.S. Survey Feet

## SKETCH OF REFERENCE TIES



Statement of evidence relative to this corner location is on back of page.

I hereby certify that this document and the data contained herein was prepared by me or under my direct supervision.

*Ernest Lund*  
Signature

1-03-2007  
Date

Registration No. Minn No 9808

Land Surveyor,  Professional Engineer

County Surveyor,  County Engineer

## OFFICE OF THE COUNTY RECORDER

County of \_\_\_\_\_

I hereby certify that this document was filed in the County Recorder's office at \_\_\_\_\_ M. on the

\_\_\_\_\_ day of \_\_\_\_\_ A.D., 20\_\_

County Recorder \_\_\_\_\_

BY \_\_\_\_\_ Deputy

DOCUMENT NO. \_\_\_\_\_

## EAST QUARTER CORNER SECTION 08, T41, R24

### STATEMENT OF EVIDENCE

THE ORIGINAL CORNER WAS SET BY DEPUTY SURVEYOR ISAAC BANKER IN DECEMBER 1855. EVIDENCE FOR THE CORNER OR BEARING TREES NO LONGER REMAIN. NO RECORDS OF SUBSEQUENT SURVEYS COULD BE FOUND AT KANABEC COUNTY OFFICES.

IN APRIL 2004 E.G. RUD AND SONS RAN A SURVEY AROUND SECTIONS 7, 8, 9, 16, 17, AND 18 TO LOCATE EXISTING MONUMENTATION AND LINES OF OCCUPATION. THIS CORNER FALLS AT AN INTERSECTION OF FENCES RUNNING SOUTH AND WEST. THERE IS ALSO A FENCE INTERSECTION 84 FEET WEST. LEO NUTT, LONG TIME RESIDENT, TESTIFIED THAT THE EASTERLY FENCE CORNER IS THE ONE THAT REPRESENTS THE ACCEPTED LOCATION OF THE QUARTER CORNER. THIS ALSO FITS A LINE AND SPLIT LOCATION BETTER THAN THE OTHER FENCE CORNER. WE DID A SEARCH FOR A CORNER BUT COULD NOT FIND ANY EVIDENCE. THEREFOR WE SET A # 7 REBAR WITH ALUMINUM CAP, TOOK TIES AND ESTABLISHED KANABEC COUNTY COORDINATES USING G.P.S. EQUIPMENT.