

CERTIFICATE OF LOCATION OF GOVERNMENT CORNER

NORTHEAST Corner of Section 17, Township 41, Range 24, 4TH P.M.

STATE OF MINNESOTA, County of KANABEC

At the corner location shown on the sketch:
On 05/ /2004 Set a Kanabec County Monument.

Kanabec County U.S. Survey Feet Coordinates
NAD 1983, HARN 1996 Adjustment
Obtained by RTK GPS Observation

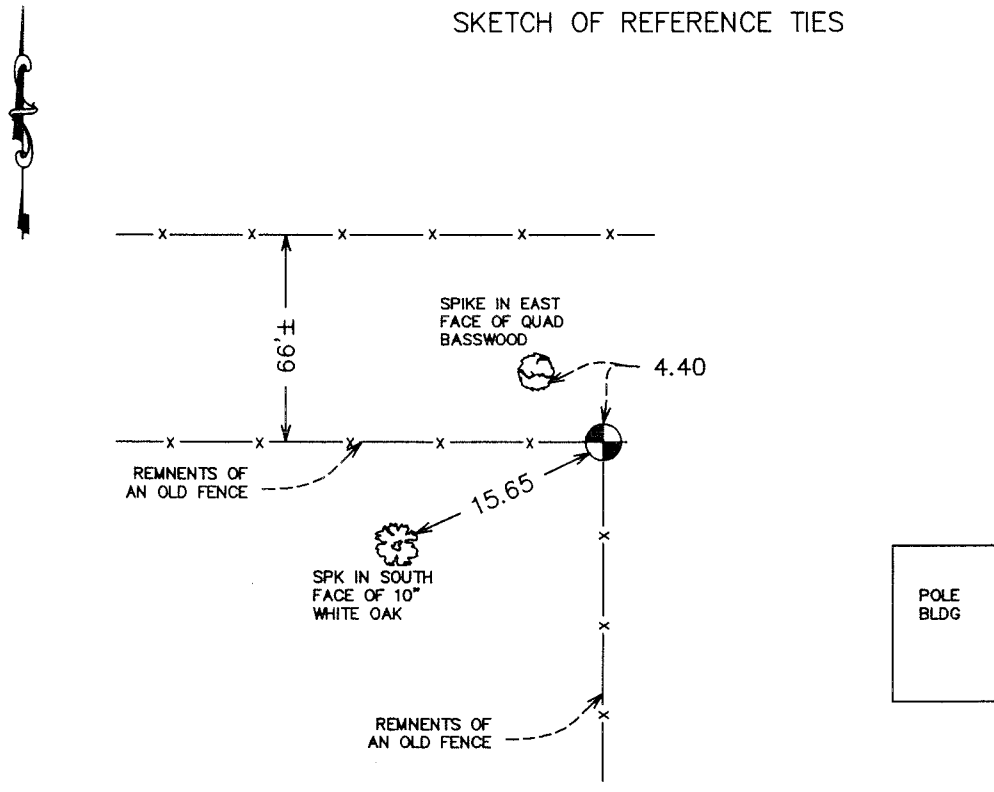
Northing= 213169.180

Easting= 375352.050

Note: NAD 1983, HARN 1996 Adjustment
coordinates are NOT compatible with
NAD 1983 coordinates

Note: 1 Meter=3937/1200 U.S. Survey Feet

SKETCH OF REFERENCE TIES



Statement of evidence relative to this corner location is on back of page.

I hereby certify that this document and the data contained herein was prepared by me or under my direct supervision.

Ernest J. Reed 7-25-2004
Signature Date

Registration No. 9808

Land Surveyor, Professional Engineer

County Surveyor, County Engineer

OFFICE OF THE COUNTY RECORDER

County of _____

I hereby certify that this document was filed in the County Recorder's office at _____ M. on the _____ day of _____ A.D., 20____

County Recorder _____

BY _____ Deputy

DOCUMENT NO. _____

STATEMENT OF EVIDENCE

Original corner was set by Isaac Banker in January 1856. Evidence of the original corner and the 4 bearing trees no longer remain. There are no records of any surveys in the County offices which have used the corner.

In May 2004, we ran a survey around Sections 7, 8, 17, 18, 19, and 20 to tie in lines of occupation and existing monumentation. There is an old fence line running west and south from this corner. Rick Martens (3rd generation on farm) testified that his father and grandfather had always used the fence line for their property lines. We accepted this location as the best evidence for this corner.

We set a Kanabec County monument, took ties, and established Kanabec County coordinates on the monument.