

CERTIFICATE OF LOCATION OF GOVERNMENT CORNER

NORTH QUARTER Corner of Section 21, Township 41, Range 24, 4TH P.M.

STATE OF MINNESOTA, County of KANABEC

At the corner location shown on the sketch:
On 05/ /2004 Found a Kanabec County Monument.

Kanabec County U.S. Survey Feet Coordinates
NAD 1983, HARN 1996 Adjustment
Obtained by RTK GPS Observation

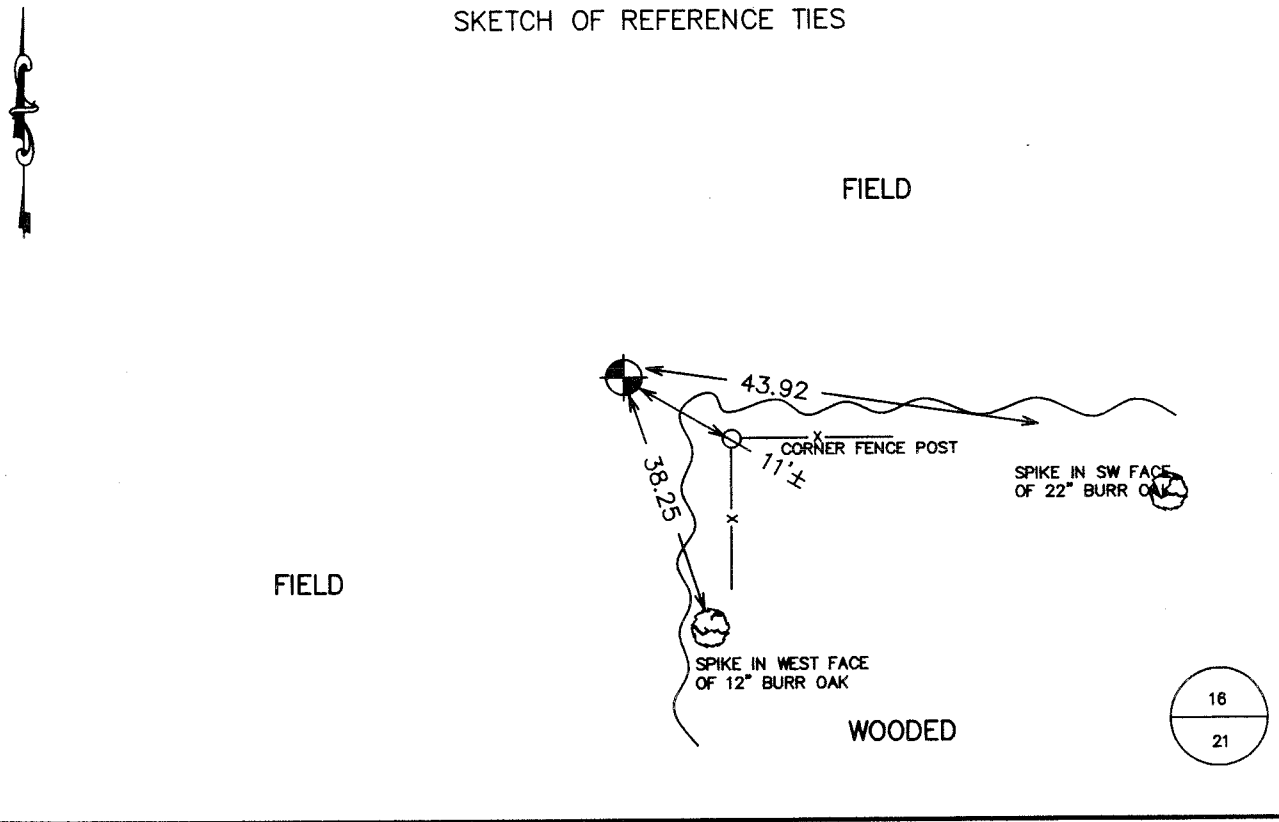
Northing= 207922.36

Easting= 377874.26

Note: NAD 1983, HARN 1996 Adjustment
coordinates are NOT compatible with
NAD 1983 coordinates

Note: 1 Meter=3937/1200 U.S. Survey Feet

SKETCH OF REFERENCE TIES



Statement of evidence relative to this corner location is on back of page.

I hereby certify that this document and the data contained herein was prepared by me or under my direct supervision.

Ernest Reed
Signature

8-03-2004
Date

Registration No. 9808

Land Surveyor, [] Professional Engineer

[] County Surveyor, [] County Engineer

OFFICE OF THE COUNTY RECORDER

County of _____

I hereby certify that this document was filed in the County Recorder's office at _____ M. on the

_____ day of _____ A.D., 20__

County Recorder _____

BY _____ Deputy

DOCUMENT NO. _____

STATEMENT OF EVIDENCE

N1/4 COR SEC 21, T41, R24

The original Government corner was set by Isaac Banker in December 1855. The original corner and ties no longer remain. No record of subsequent survey at County.

I met with Terry Dalbey whose family has owned the 80 acres in all four quadrants since the early 1900's. He pointed out the location showed to him by his grandfather where the section corner was. The location was on the centerline of an old east-west road that is now gone, and at the corner of a wooded area. I set a Kanabec County monument at this location and tied it into my survey of Section 21, which is on file at the County Engineer's Office.

In May 2004, we established Kanabec County coordinates on this monument using GPS equipment.