

CERTIFICATE OF LOCATION OF GOVERNMENT CORNER

NORTHWEST Corner of Section 21, Township 41, Range 24, 4TH P.M.

STATE OF MINNESOTA, County of KANABEC

At the corner location shown on the sketch:
On 05/ /2004 Found a Kanabec County Monument.

Kanabec County U.S. Survey Feet Coordinates
NAD 1983, HARN 1996 Adjustment
Obtained by RTK GPS Observation

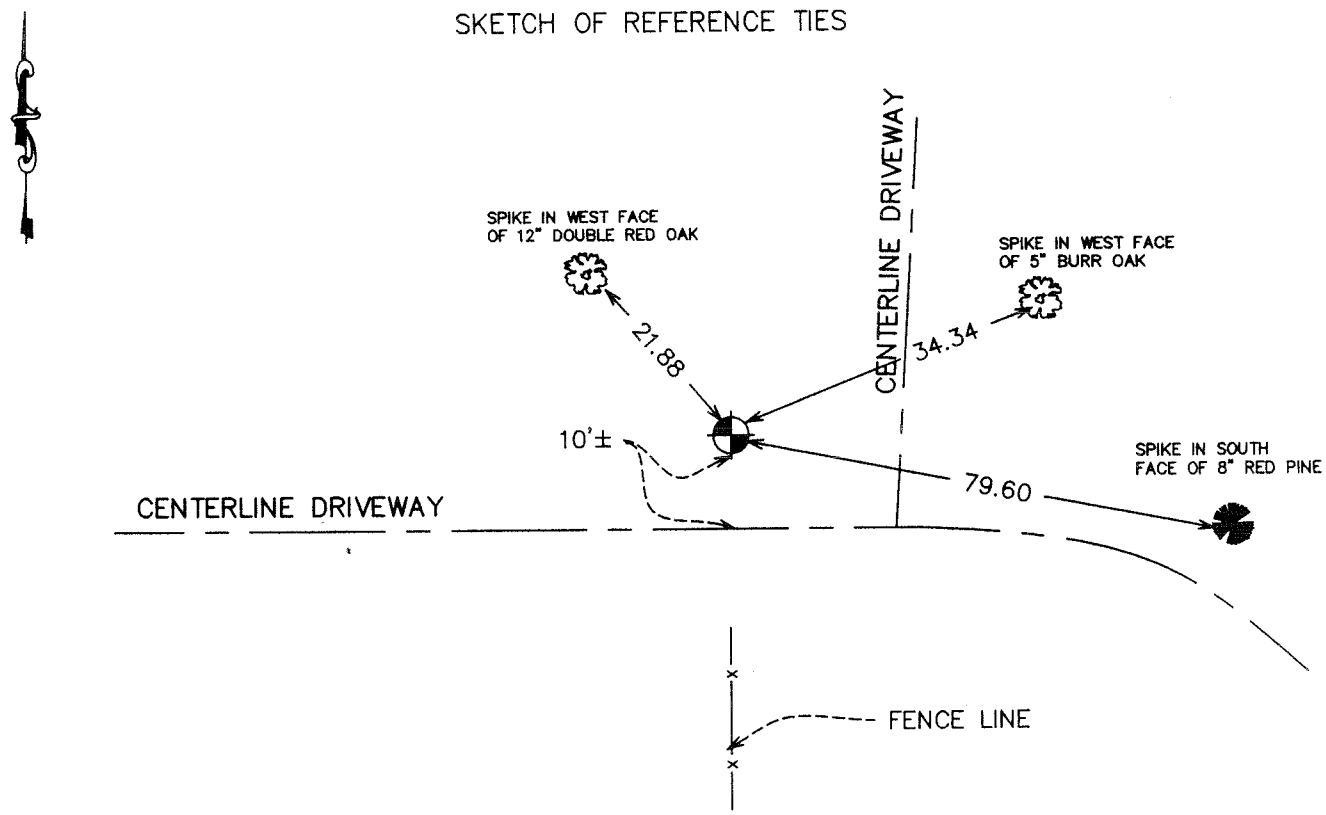
Northing= 207962.40

Easting= 375097.52

Note: NAD 1983, HARN 1996 Adjustment
coordinates are NOT compatible with
NAD 1983 coordinates

Note: 1 Meter=3937/1200 U.S. Survey Feet

SKETCH OF REFERENCE TIES



Statement of evidence relative to this corner location is on back of page.

I hereby certify that this document and the data contained herein was prepared by me or under my direct supervision.

Ernest J. Reed
Signature

8-03-2004
Date

Registration No. 9808

Land Surveyor, [] Professional Engineer

[] County Surveyor, [] County Engineer

OFFICE OF THE COUNTY RECORDER

County of _____

I hereby certify that this document was filed in the County Recorder's office at _____ M. on the _____ day of _____ A.D., 20____

County Recorder _____

BY _____ Deputy

DOCUMENT NO. _____

STATEMENT OF EVIDENCE

NW Corner of Section 21

The original Section corner was set by Isaac Banker in December 1855. The original corner and ties no longer remain. No record of subsequent survey at County. At the same time, Rick Martens showed me the location for the North Quarter corner of Section 20, he also accompanied me to this corner and showed me the location his grandfather and father had used for this corner. This lined up with an old fence line to the south, an old occupation line to the north, and about 10 feet north of the centerline of an east-west driveway.

I set a Kanabec County Monument and included it in my survey of Section 21.

In May 2004, we established Kanabec County coordinates on this monument using GPS equipment.