

# CERTIFICATE OF LOCATION OF GOVERNMENT CORNER

SOUTH QUARTER Corner of Section 21, Township 41, Range 24, 4TH P.M.

STATE OF MINNESOTA, County of KANABEC

At the corner location shown on the sketch:  
On 05/07/2003 Found a Kanabec County Monument.

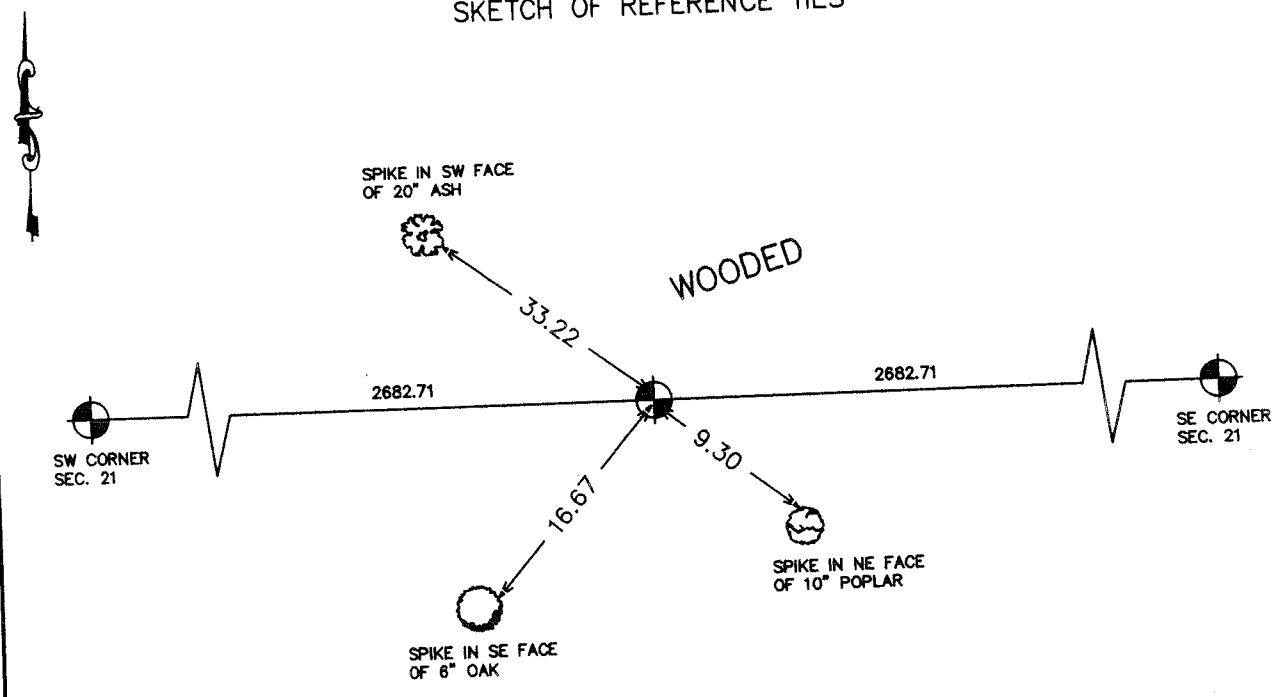
Kanabec County U.S. Survey Feet Coordinates  
NAD 1983, HARN 1996 Adjustment  
Obtained by RTK GPS Observation

Northing= 202684.761

Easting= 377612.026

Note: NAD 1983, HARN 1996 Adjustment  
coordinates are NOT compatible with  
NAD 1983 coordinates  
Note: 1 Meter=3937/1200 U.S. Survey Feet

## SKETCH OF REFERENCE TIES



Statement of evidence relative to this corner location is on back of page.

I hereby certify that this document and the data contained herein was prepared by me or under my direct supervision.

*Ernest H. Reed*  
Signature

Aug 8, 2004  
Date

Registration No. 9808

- Land Surveyor, [ ] Professional Engineer
- [ ] County Surveyor, [ ] County Engineer

### OFFICE OF THE COUNTY RECORDER

County of \_\_\_\_\_

I hereby certify that this document was filed in the County Recorder's office at \_\_\_\_\_ M. on the \_\_\_\_\_ day of \_\_\_\_\_ A.D., 20\_\_\_\_

County Recorder \_\_\_\_\_

BY \_\_\_\_\_ Deputy

DOCUMENT NO. \_\_\_\_\_

## STATEMENT OF EVIDENCE

S 1/4 COR SEC 21

Original Government corner and ties are gone. No record of subsequent surveys at County. No lines of occupation or evidence of ownership within 100 feet of the lost position where I set a Kanabec County Monument on line and equidistant between the SE and SW corners of Section 21. I took ties and included it in my survey of Section 21.

On May 7, 2003, we established Kanabec County Coordinates on this corner using GPS equipment.