

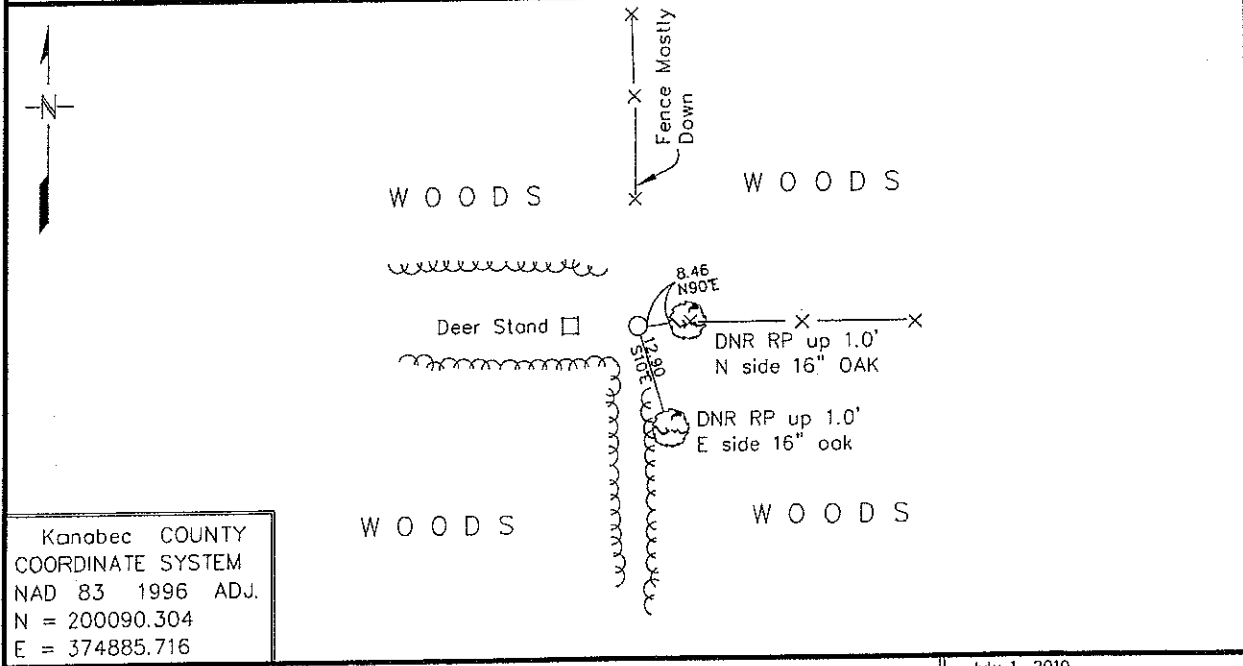
Index No. 4124100

# CERTIFICATE OF LOCATION OF GOVERNMENT CORNER

East Quarter Corner of Section 29, Township 41, Range 24  
4th Principal Meridian, State of Minnesota, County of Kanabec

At the corner location shown on the sketch:

- On \_\_\_\_\_ found a \_\_\_\_\_  
DATE
- left monument as found,  lowered monument,  removed monument (explain)
- On 6/1/2010 Placed a 3/4" X 24" rebar with DNR cap marked 19839 on  
DATE fencelines east and downed fence north



Kanabec COUNTY  
COORDINATE SYSTEM  
NAD 83 1996 ADJ.  
N = 200090.304  
E = 374885.716

Statement of evidence for this corner location is on back of this page. July 1, 2010 AMA00321

I certify that this document was researched and prepared by me or under my direct supervision.

SIGNATURE Daniel A. Nelson DATE 12/7/2010 License Number 19839

Title:  Land Surveyor  Professional Engineer  County Surveyor  County Engineer

Statement of Evidence for the East Quarter Corner of Section 29,  
Township 41 North, Range 24 West of the 4<sup>th</sup> Principal Meridian.  
Kanabec County, Minnesota

1855 Deputy Surveyor Banker notes indicate North between Section 28 & 29, Va 11°, At 40.00 Chains Set ¼ Section Post with the following ties: Aspen 14" N 52° 20' – 49 links, W. Birch 7" S 16° 15' W 104 links. Neither the monument nor the accessories were found during this survey.

2010 We met with County Surveyor Ernest Rud and he did not have additional records on this particular corner.

We set this corner at the intersection of a fence line east and a downed fence line to the north. We set a ¾" X 24" Rebar with Plastic Cap marked MN DNR 19839.

For more information concerning this survey contact Minnesota DNR.