

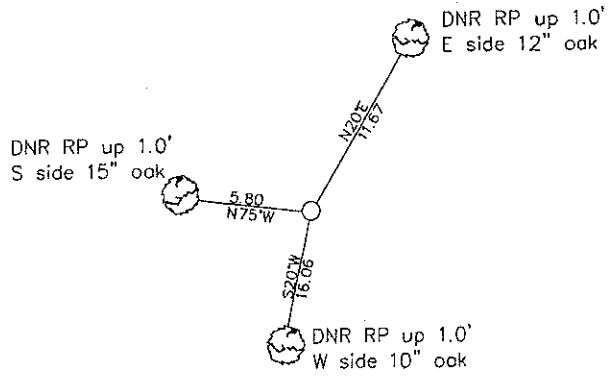
Index No. 4124098

CERTIFICATE OF LOCATION OF GOVERNMENT CORNER

Northeast Corner of Section 32, Township 41, Range 24
4th Principal Meridian, State of Minnesota, County of Kanabec

At the corner location shown on the sketch:

- On _____ found a _____
DATE
- left monument as found, lowered monument, removed monument (explain)
- On 6/1/2010 Placed a 3/4" X 24" rebar with DNR cap marked 19839 at
DATE
Lost Position (Double Proportion)



Kanabec COUNTY
COORDINATE SYSTEM
NAD 83 1996 ADJ.
N = 197446.298
E = 374888.042

Statement of evidence for this corner location is on back of this page.

July 1, 2010
AMA00321

I certify that this document was researched and prepared by me or under my direct supervision.

SIGNATURE David A. Nault DATE 12/7/2010 License Number 19839

Title: Land Surveyor Professional Engineer County Surveyor County Engineer

Statement of Evidence for the Northeast Corner of Section 32,
Township 41 North, Range 24 West of the 4th Principal Meridian.
Kanabec County, Minnesota

1855 Deputy Surveyor Banker notes indicate North between Sections 32 & 33, Va 11° 13 E. At 40.00 chains Set ¼ Sec. Post, Tamarack 13" S 39°E, 5 links, Tamarack 7" S 84° 40' W, 8 links

Neither the monument nor the accessories were found during this survey.

2010 We met with County Surveyor Ernest Rud and he did not have additional records on this particular corner.

We set this corner at the lost position being double proportion between the NW Corner of Section 32 and the NE Corner of Section 33 and SE Corner of Section 32 and the East Quarter Corner of Section 29. We set a 1 ¼ " X 72" Axel shaft in woods up 2'.

For more information concerning this survey contact Minnesota DNR.