

CERTIFICATE OF LOCATION OF GOVERNMENT CORNER

East Quarter Corner of Section 32, Township 41 North, Range 24 West,
4th Principal Meridian, Kanabec County, State of Minnesota

At the corner location shown on the sketch:
Set a 7/8" x 36" Rebar Monument with Aluminum Cap at a lost position.

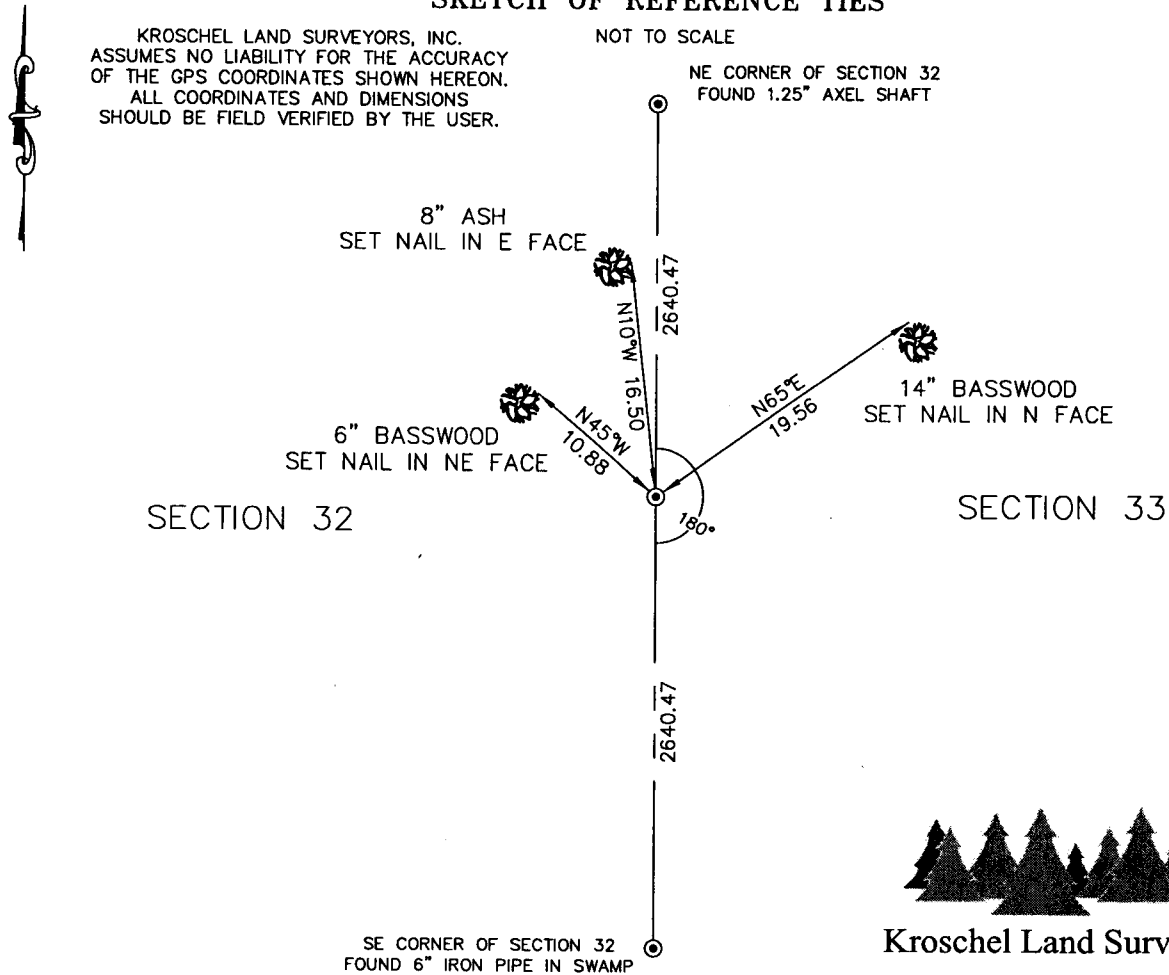
Kanabec County U.S. Survey Feet Coordinates
NAD 1983, HARN 1996 Adjustment
Obtained by RTK GPS observation
Northing: 194816.3031
Easting: 375124.3915

Note: NAD 1983, HARN 1996 Adjustment coordinates are NOT compatible with NAD 1983 coordinates
Note: 1 Meter = 3937/1200 U.S. Survey Feet

SKETCH OF REFERENCE TIES

KROSCHEL LAND SURVEYORS, INC.
ASSUMES NO LIABILITY FOR THE ACCURACY
OF THE GPS COORDINATES SHOWN HEREON.
ALL COORDINATES AND DIMENSIONS
SHOULD BE FIELD VERIFIED BY THE USER.

NOT TO SCALE




Kroschel Land Surveyors, Inc.

1639 Main Street North, Suite 6, Pine City, MN 55063
Phone: 320-629-3267 Fax: 320-629-0176

Statement of evidence relative to this corner location is on back of page.

I hereby certify that this survey, plan, or report was prepared by me or under my direct supervision, that the United States public land survey monument record is correct and complete to the best of my knowledge and belief, and that I am a duly Licensed Land Surveyor under the laws of the State of Minnesota.



 Tyler J. Kroschel
 License No. 44490
 Land Surveyor County Surveyor
 Date 3-1-2019

OFFICE OF THE COUNTY RECORDER

County of Kanabec

I hereby certify that this document was filed in the County Recorder's office at 11:00 A.M. on the 22 day of October, A.D., 2020
County Recorder Lisa Holcomb

By _____, Deputy

DOCUMENT NO. _____

Statement of Evidence:

In December of 1855 Deputy Surveyor Isaac Banker set a post to mark the East Quarter corner of Section 32, Township 41 North, Range 24 West of the 4th Principal Meridian.

Reference ties were taken to:

13 inch Tamarack at South 39 degrees East a distance of 5 links

7 inch Tamarack at South 84 degrees 40 minutes West a distance of 8 links

All of the original Government evidence was searched for. None was found.

There is no resurvey information on file for this corner.

In January of 2017 I made a survey around Section 32, Township 41, Range 24 for Garland Finch to locate existing monuments, lines of occupation and establish search areas.

On 1/25/2017 I made a search with a magnetic locator. No evidence of the corner was found. I determined the corner lost and placed a 7/8" x 36" Rebar Monument with Aluminum Cap on-line and halfway between the recorded Southeast and Northeast corners of Section 32. Assigned Kanabec County coordinates and established reference ties as shown.

This location was determined to be the best available evidence of the original government corner monument location.



Kroschel Land Surveyors, Inc.

1639 Main Street North, Suite 6, Pine City, MN 55063
Phone: 320-629-3267 Fax: 320-629-0176