

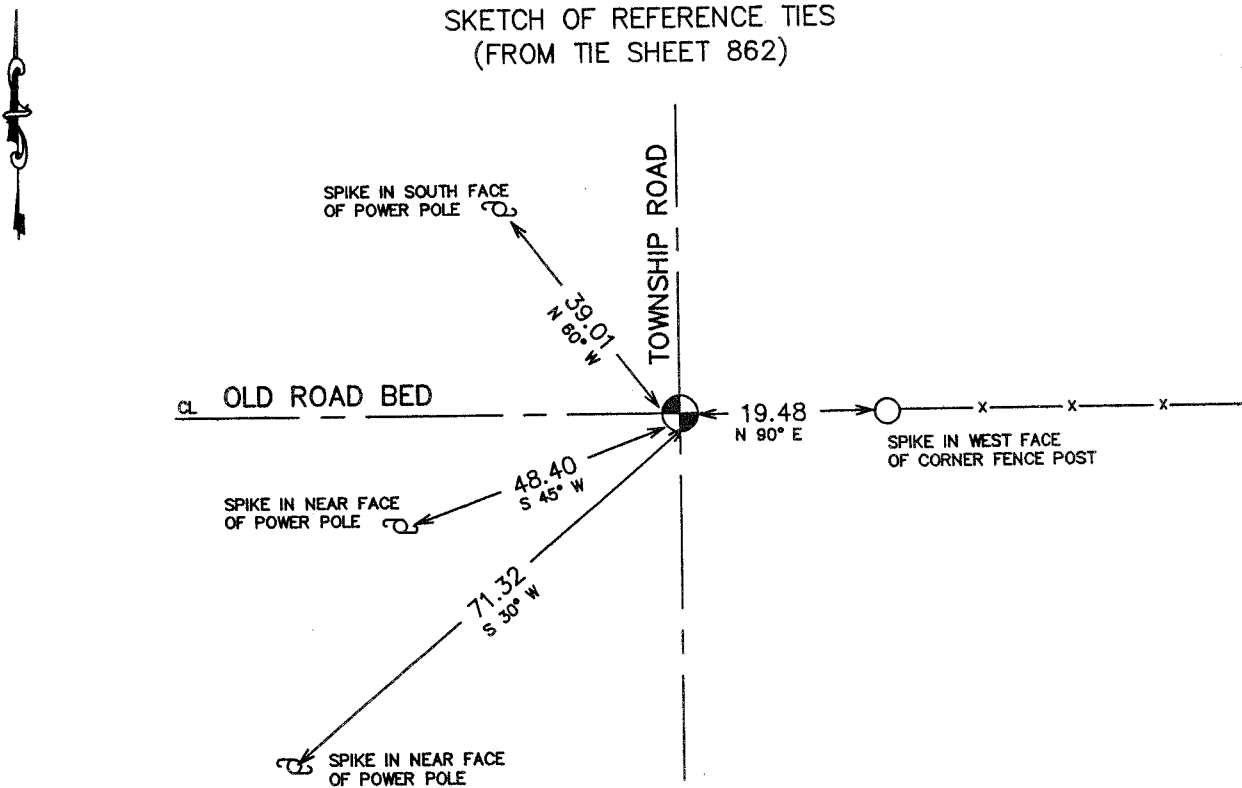
CERTIFICATE OF LOCATION OF GOVERNMENT CORNER

NORTHEAST Corner of Section 9, Township 41, Range 24, 4TH P.M.
 STATE OF MINNESOTA, County of KANABEC

At the corner location shown on the sketch:
 On 05/07/2003 Set a Kanabec County Monument.

Kanabec County U.S. Survey Feet Coordinates
 NAD 1983, HARN 1996 Adjustment
 Obtained by RTK GPS Observation
 Northing= 218482.657
 Easting= 380835.669
 Note: NAD 1983, HARN 1996 Adjustment
 coordinates are NOT compatible with
 NAD 1983 coordinates
 Note: 1 Meter=3937/1200 U.S. Survey Feet

SKETCH OF REFERENCE TIES
 (FROM TIE SHEET 862)



Statement of evidence relative to this corner location is on back of page.

I hereby certify that this document and the data contained herein was prepared by me or under my direct supervision.

Ernest J. Rud 7-17-2004
Signature Date

Registration No. 9808

Land Surveyor, [] Professional Engineer
 [] County Surveyor, [] County Engineer

OFFICE OF THE COUNTY RECORDER

County of _____
 I hereby certify that this document was filed in the County Recorder's office at _____ M. on the _____ day of _____ A.D., 20____

County Recorder _____
 BY _____ Deputy

DOCUMENT NO. _____

All of the original bearing trees are now gone.

A Supervisor's road order, on file at the County Auditor's Office, dated November 28, 1902, was for a town road beginning at the north quarter corner of Section 9, Township 41, Range 24, thence running east to the northeast corner of Section 9, Township 41, Range 24, thence south to the southeast corner of Section 21, Township 41, Range 24. The Supervisor's road order was surveyed by John Nelson, a former county surveyor. A description he wrote, dated January 29, 1903, states that he found a good government corner at the northeast corner of Section 9, Township 41, Range 24.

A town board Final Road Order on file at the County Auditor's Office, dated July 31, 1905, was for a town road beginning at the southeast corner of Section 4, Township 41, Range 24, thence running north on the section line between 3 and 4.

On November 11, 1992, we made a 3' by 15' by 15' excavation with a backhoe at the center line intersection of the township road north, the extension of the old road bed west, and the extension of the fence line east. We found a 3/8" rebar with a metal locator, but found no other evidence of the corner in excavation.

The 3/8" rebar fits in harmony with the old road bed west and centerline of the township road, and was accepted as the perpetuated original corner location.

(2003)

On May 7th, 2003, we reset corner using tie sheet #862 and established Kanabec County coordinates on this position using G.P.S. equipment.