

# CERTIFICATE OF LOCATION OF GOVERNMENT CORNER

EAST QUARTER Corner of Section 9, Township 41, Range 24, 4TH P.M.  
 STATE OF MINNESOTA, County of KANABEC

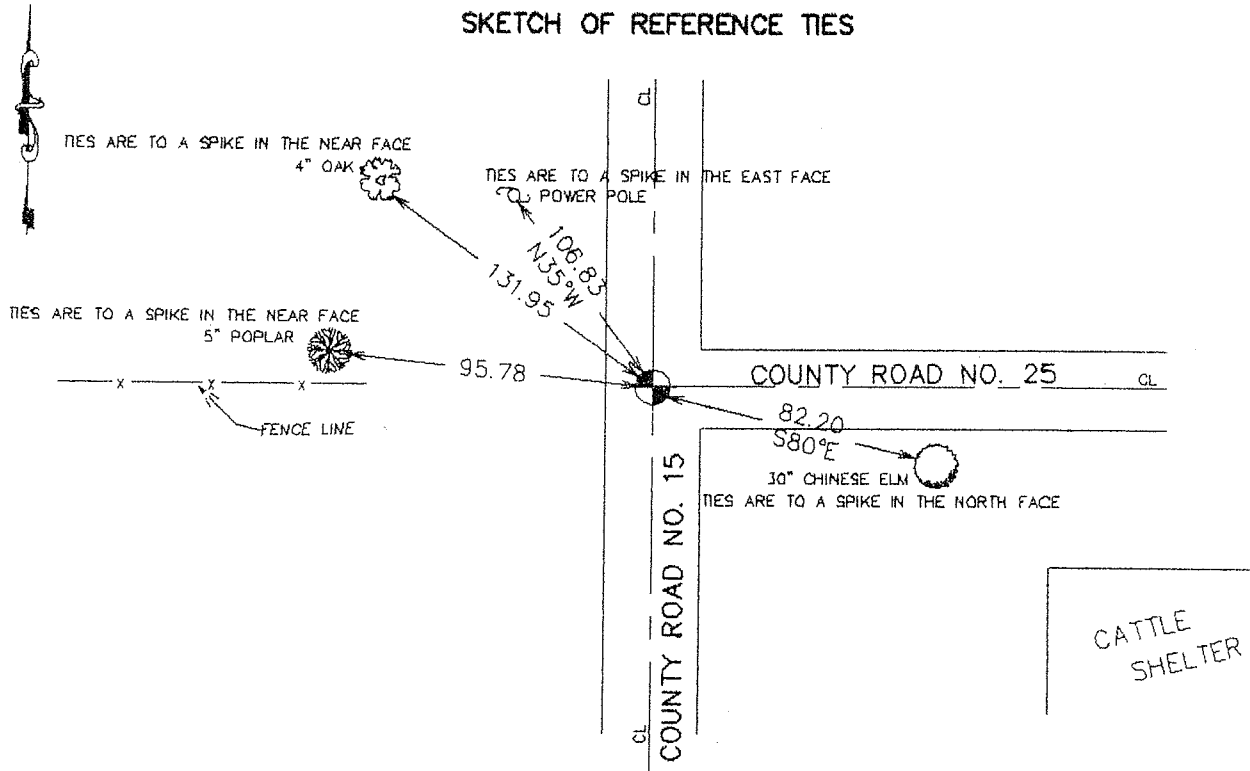
At the corner location shown on the sketch:  
 On 05/07/2003 Set a Kanabec County Monument.

Kanabec County U.S. Survey Feet Coordinates  
 NAD 1983, HARN 1996 Adjustment  
 Obtained by RTK GPS Observation

Northing= 215819.488  
 Easting= 380742.292

Note: NAD 1983, HARN 1996 Adjustment  
 coordinates are NOT compatible with  
 NAD 1983 coordinates  
 Note: 1 Meter=3937/1200 U.S. Survey Feet

## SKETCH OF REFERENCE TIES



Statement of evidence relative to this corner location is on back of page.

I hereby certify that this document and the data contained herein was prepared by me or under my direct supervision.

*Ernest J. Reed*  
 Signature

11-30-2003  
 Date

Registration No. 9808

- Land Surveyor,       Professional Engineer  
 County Surveyor,     County Engineer

### OFFICE OF THE COUNTY RECORDER

County of \_\_\_\_\_

I hereby certify that this document was filed in the County Recorder's office at \_\_\_\_\_ M. on the

\_\_\_\_\_ day of \_\_\_\_\_ A.D., 20\_\_\_\_

County Recorder \_\_\_\_\_

BY \_\_\_\_\_ Deputy

DOCUMENT NO. \_\_\_\_\_

## STATEMENT OF EVIDENCE

(from tie sheet no. 861)

All of the original bearing trees are now gone.

There is a town road order, dated February 10, 1903, on file at the County Auditor's Office, for a town road along the east line of Section 9, surveyed by former County Surveyor, John Nelson.

In November of 1992, we made a survey along the east line of Sections 9, 16, and 21 to locate existing monuments, lines of occupation and search areas. This corner falls at the intersection of road north, south and east and fence lines west

In 1979, I found an iron pin at this corner.

No excavation was made at this corner as it appears all evidence was removed in a cut for road construction.

The iron pin found in 1979, could not be found. We reset the iron pin location from our 1979 survey notes.

This location was accepted as the perpetuated original corner location.

On May 7, 2003 we set a Kanabec County Monument using ties and survey by M.B. Rude dated December 7, 1992 for Kanabec County Highway Department.

We established Kanabec County coordinates using G.P.S. equipment.