

CERTIFICATE OF LOCATION OF GOVERNMENT CORNER

NORTH QUARTER Corner of Section 15, Township 41, Range 24, 4TH P.M.

STATE OF MINNESOTA, County of KANABEC

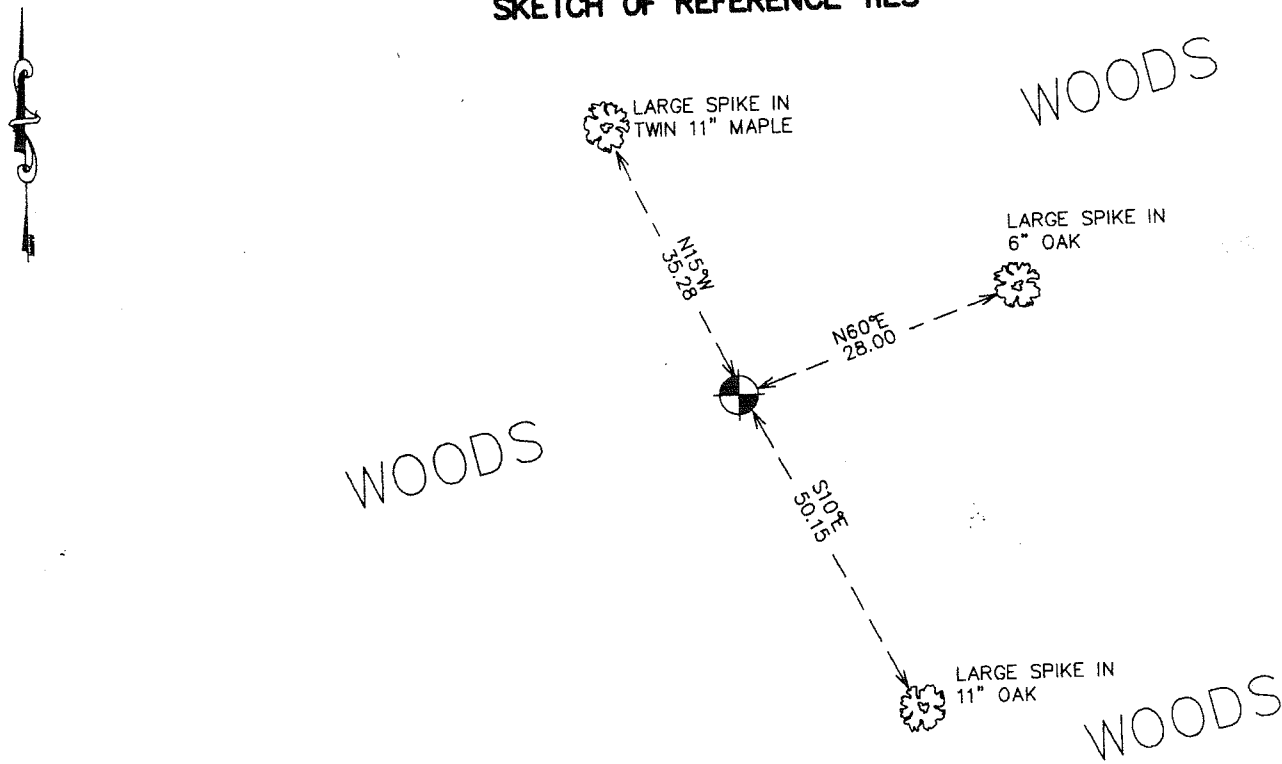
At the corner location shown on the sketch:
SET #7 REBAR
AND ESTABLISHED G.P.S. COORDINATES ON ITS LOCATION.

Kanabec County U.S. Survey Feet Coordinates
NAD 1983, HARN 1996 Adjustment
Obtained by RTK GPS Observation

Northing= 213087.225
Easting= 383332.443

Note: NAD 1983, HARN 1996 Adjustment
coordinates are NOT compatible with
NAD 1983 coordinates
Note: 1 Meter=3937/1200 U.S. Survey Feet

SKETCH OF REFERENCE TIES



Statement of evidence relative to this corner location is on back of page.

I hereby certify that this document and the data contained herein was prepared by me or under my direct supervision.

Erect Gud
Signature

2-13-2007
Date

Registration No. Minn No 9808

- Land Surveyor, Professional Engineer
- County Surveyor, County Engineer

OFFICE OF THE COUNTY RECORDER

County of _____

I hereby certify that this document was filed in the County Recorder's office at _____ M. on the

_____ day of _____ A.D., 20____

County Recorder _____

BY _____ Deputy

DOCUMENT NO. _____

NORTH QUARTER CORNER SECTION 15, T41, R24

STATEMENT OF EVIDENCE

THE ORIGINAL CORNER WAS SET BY DEPUTY SURVEYOR ISAAC BANKER ON DECEMBER 26, 1855. 2 ASPEN TREES WERE NOTED AS BEARING TREES. EVIDENCE TO THE CORNER OR BEARING TREES NO LONGER REMAIN.

NO OTHER RECORDS OF SURVEYS COULD BE FOUND AT THE KANABEC COUNTY OFFICE.

THIS CORNER FALLS AT THE INTERSECTION OF A FENCE RUNNING NORTH AND AN EAST-WEST FENCE. ALL FENCES ARE OVERGROWN AND FENCE POSTS GONE. WE LOCATED THE FENCES BY USING A METAL LOCATOR AND PULLING UP THE WIRE TO THE SURFACE.

LAND OWNER RICK SBANDBERG (3RD GENERATION) OF THE SOUTHWEST QUARTER OF SECTION 10 TESTIFIED HIS DAD AND GRANDFATHER HAD ALWAYS ASSUMED THIS FENCE CORNER TO BE THE SECTION CORNER. THIS CORNER FIT WITHIN 4 FEET OF BEING EQUIDISTANT TO THE NORTHEAST AND NORTHWEST CORNERS OF SECTION 15. THEREFORE WE ACCEPTED THIS FENCE CORNER AS BEING THE PERPETUATED LOCATION FOR THE QUARTER CORNER. ON JANUARY 4, 2007 WE SET A #7 REBAR WITH AN ALUMINUM CAP, TOOK TIES AND ESTABLISHED KANABEC COUNTY COORDINATES USING G.P.S. EQUIPMENT.