

# CERTIFICATE OF LOCATION OF GOVERNMENT CORNER

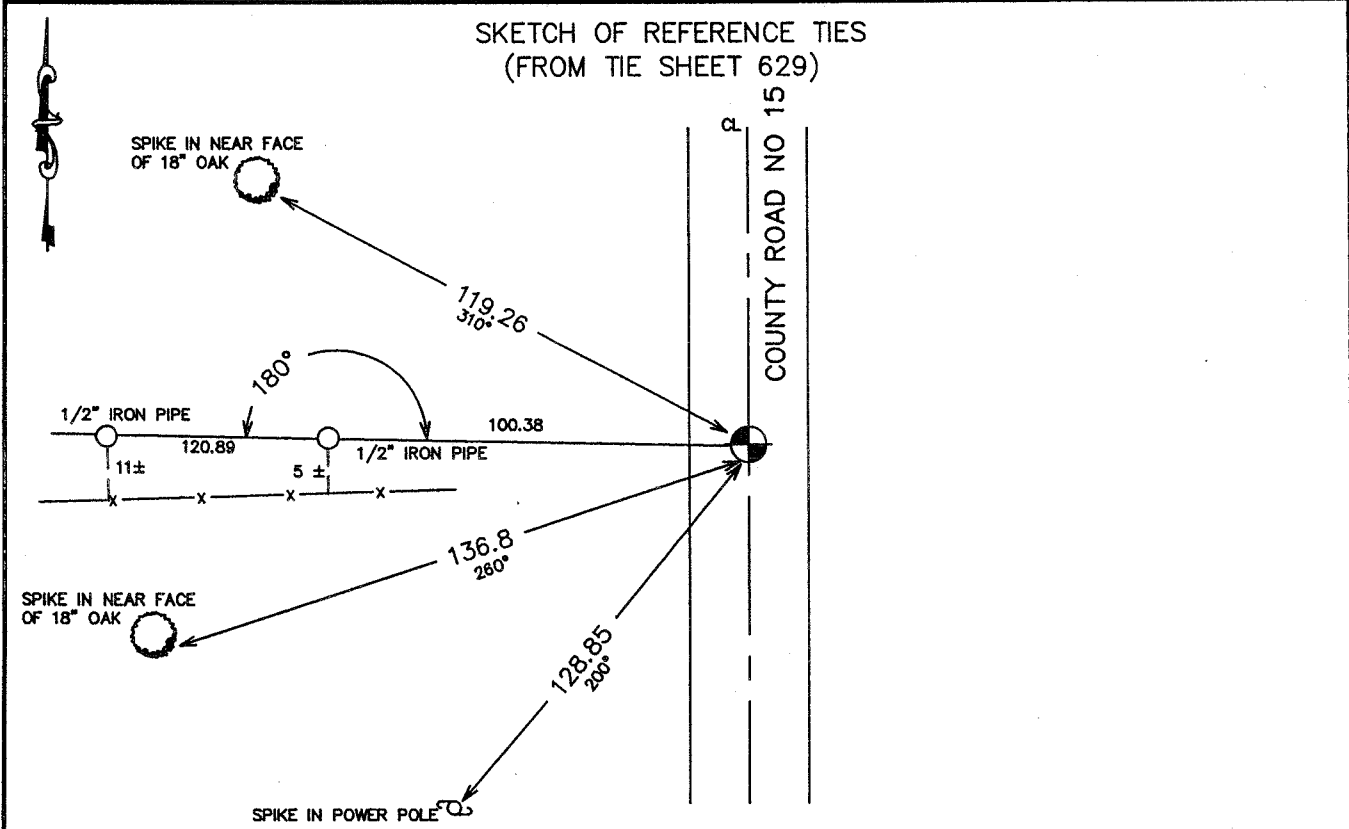
NORTHEAST Corner of Section 16, Township 41, Range 24, 4TH P.M.  
 STATE OF MINNESOTA, County of KANABEC

At the corner location shown on the sketch:  
 On 05/07/2003 Set a Kanabec County Monument.

Kanabec County U.S. Survey Feet Coordinates  
 NAD 1983, HARN 1996 Adjustment  
 Obtained by RTK GPS Observation

Northing= 213174.609  
 Easting= 380685.353

Note: NAD 1983, HARN 1996 Adjustment  
 coordinates are NOT compatible with  
 NAD 1983 coordinates  
 Note: 1 Meter=3937/1200 U.S. Survey Feet



Statement of evidence relative to this corner location is on back of page.

I hereby certify that this document and the data  
 contained herein was prepared by me or under  
 my direct supervision.

Ernest Alred  
Signature

7-17-04  
Date

Registration No. \_\_\_\_\_

- Land Surveyor,     Professional Engineer  
 County Surveyor,     County Engineer

### OFFICE OF THE COUNTY RECORDER

County of \_\_\_\_\_

I hereby certify that this document was filed in  
 the County Recorder's office at \_\_\_\_\_ M. on the  
 \_\_\_\_\_ day of \_\_\_\_\_ A.D., 20\_\_\_\_

County Recorder \_\_\_\_\_

BY \_\_\_\_\_ Deputy

DOCUMENT NO. \_\_\_\_\_

STATEMENT OF EVIDENCE

(FROM TIE SHEET 629, DATED 9-25-80)

All of the original bearing trees are now gone.

There is a road order filed in 1903 for a road 4 rods surveyed and laid out by John Nelson, County Surveyor, along the west line of Sections 10, 15, and 22. The County Highway Plans show this road was regraded in the same location.

In February, 1979, I ran a survey along the west line of Sections 10, 15, and 22, and located the lines of occupation. This corner falls on a north-south road and a fence line east extended west.

In July, 1980, I made an excavation with a backhoe 15 feet east-west and 20 feet north-south, 8 feet deep. No evidence was found in the excavation.

I accepted the center line of the north-south road and fence line east extended west as the best available evidence of the original corner location as it fits the road order from 1903, the accepted lines of occupation, and is within 2 feet of a proportional location.

(FROM TIE SHEET 629, DATED 12-30-92)

This corner was set and a Certificate was filed in 1981.

In November of 1992, in a survey along the east lines of Sections 9, 16, and 21, we found the cast iron monument per the Certificate on file.

(2003)

On May 7th, 2003, we set a Kanabec County Monument from ties and survey by M. B. Rude dated 12-7-92 for Kanabec County Highway Department. We established Kanabec County coordinates on this position using G.P.S. equipment.