

# CERTIFICATE OF LOCATION OF GOVERNMENT CORNER

EAST QUARTER Corner of Section 16, Township 41, Range 24, 4TH P.M.

STATE OF MINNESOTA, County of KANABEC

At the corner location shown on the sketch:  
On 06/07/2003 Set a Kanabec County Monument.

Kanabec County U.S. Survey Feet Coordinates  
NAD 1983, HARN 1996 Adjustment  
Obtained by RTK GPS Observation

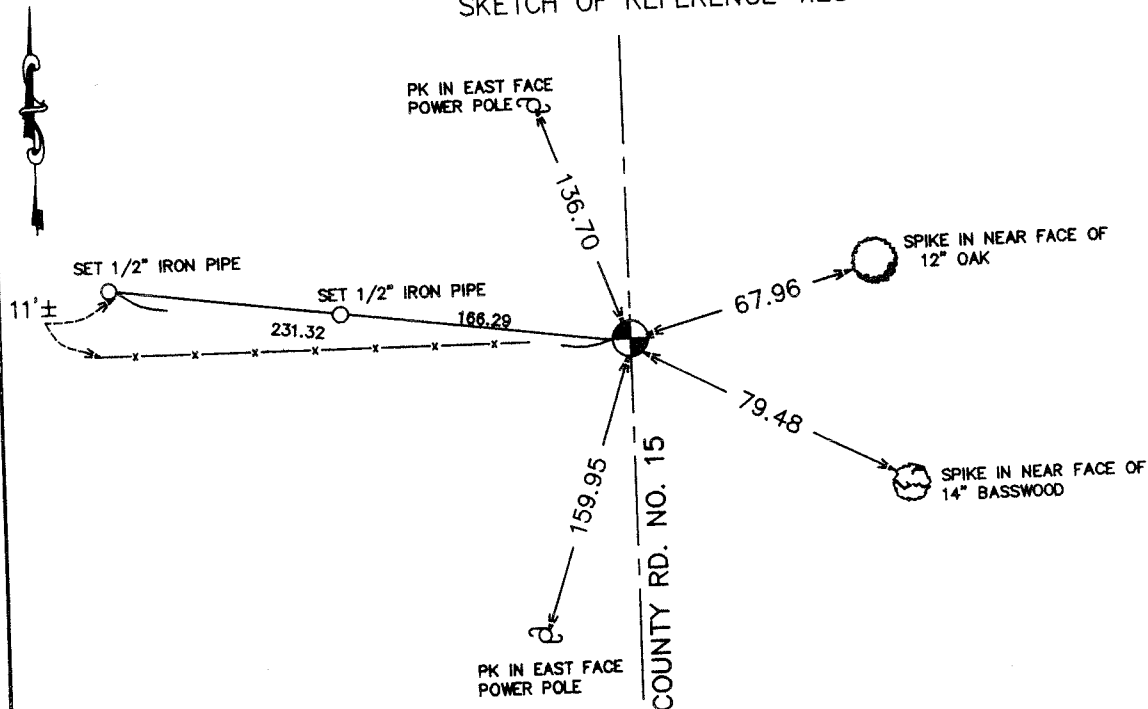
Northing= 210533.063

Easting= 380632.208

Note: NAD 1983, HARN 1996 Adjustment  
coordinates are NOT compatible with  
NAD 1983 coordinates

Note: 1 Meter=3937/1200 U.S. Survey Feet

## SKETCH OF REFERENCE TIES



Statement of evidence relative to this corner location is on back of page.

I hereby certify that this document and the data contained herein was prepared by me or under my direct supervision.

*Ernest J. Rud*  
Signature

8-03-2004  
Date

Registration No. 9808

Land Surveyor,  Professional Engineer

County Surveyor,  County Engineer

## OFFICE OF THE COUNTY RECORDER

County of \_\_\_\_\_

I hereby certify that this document was filed in the County Recorder's office at \_\_\_\_\_ M. on the \_\_\_\_\_ day of \_\_\_\_\_ A.D., 20\_\_\_\_

County Recorder \_\_\_\_\_  
BY \_\_\_\_\_ Deputy

DOCUMENT NO. \_\_\_\_\_

## STATEMENT OF EVIDENCE

All of the original Government bearing trees are now gone.

A Supervisor's Road Order on file at the County Recorder's Office, dated November 28, 1902, for a town road to begin at the North Quarter corner of Section 9, Township 41, Range 24; thence running east to the northeast corner of Section 21, Township 41, Range 24. This Supervisor's Road Order was surveyed by John Nelson, a former County Surveyor. A description he wrote, dated January 29, 1903, states that he found government bearing trees at the east quarter corner of Section 16, Township 41, Range 24, per records on file at the County Recorder's Office.

On November 11, 1992, we made a survey along the east line of Section 16, Township 41, Range 24, and adjoining sections to locate existing monuments, lines of occupation and establish search areas.

On November 23, 1992, we made a 4' by 15' by 15' excavation, with a backhoe at the center line of County Road No. 15 and the extension of the fence line west. It fits a proportional measurement of  $4' \pm$ , between the northeast corner and the southeast corner of Section 16, Township 41, Range 24. We found no evidence of the corner in excavation. We set the corner at the center line of the road and the extension of the fence line west.

This location was accepted as the perpetuated location of this corner.

On May 7, 2003, we set a Kanabec County monument using ties and survey by M.B. Rude dated December 7, 1992 for the Kanabec County Highway Department. We established Kanabec County coordinates using GPS equipment.