

CERTIFICATE OF LOCATION OF GOVERNMENT CORNER

N 1/4 Corner of Section 22, Township 41, Range 24, 4TH P.M.

STATE OF MINNESOTA, County of KANABEC

4" X 17" CAST ALUMINUM MONUMENT

Kanabec County U.S. Survey Feet Coordinates
NAD 1983, HARN 1996 Adjustment
Obtained by RTK GPS Observation

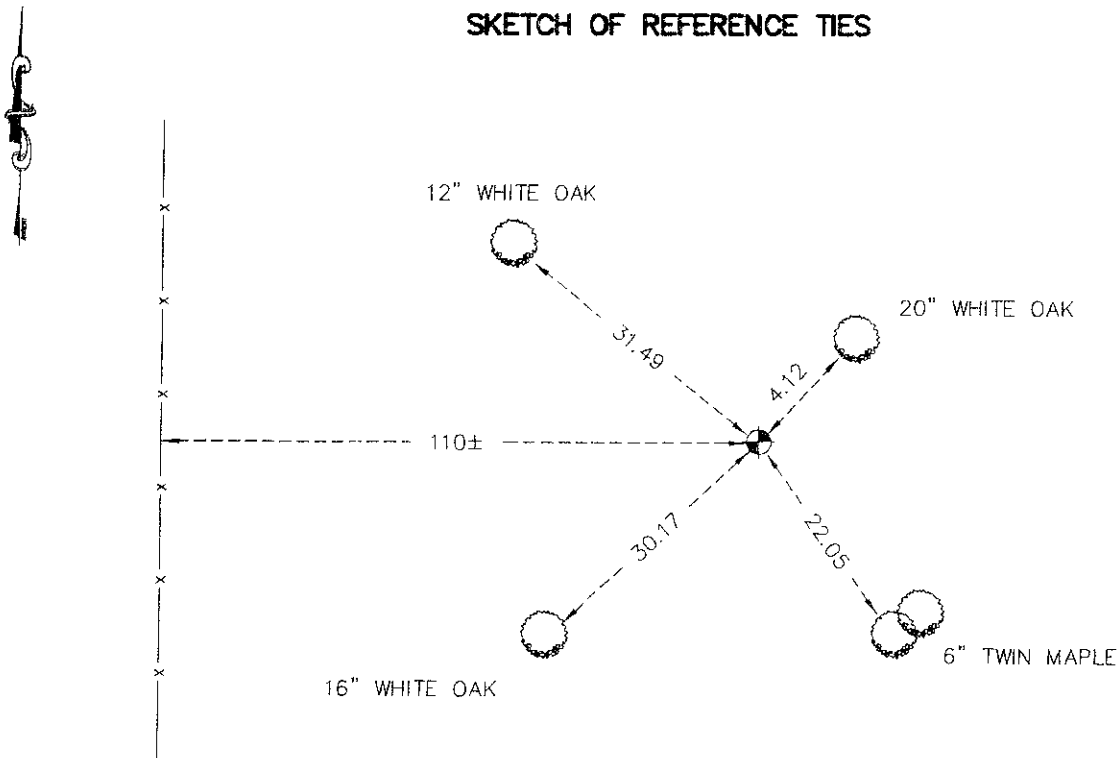
Northing= 207827.27

Easting= 383157.38

Note: NAD 1983, HARN 1996 Adjustment
coordinates are NOT compatible with
NAD 1983 coordinates

Note: 1 Meter=3937/1200 U.S. Survey Feet

SKETCH OF REFERENCE TIES



TIES ARE TO SPIKE IN BLAZE IN NEAR FACE OF TREES UNLESS OTHERWISE NOTED.

Statement of evidence relative to this corner location is on back of page.

I hereby certify that this document and the data contained herein was prepared by me or under my direct supervision.

Ernest J. Rud
Signature

6-02-2009
Date

Registration No. 9808

Land Surveyor, Professional Engineer

County Surveyor, County Engineer

OFFICE OF THE COUNTY RECORDER

County of _____

I hereby certify that this document was filed in the County Recorder's office at _____ M. on the _____ day of _____ A.D., 20____

County Recorder _____

BY _____ Deputy

BY _____ Deputy

DOCUMENT NO. _____

N. ~~E~~1/4 CORNER SECTION 22 TOWNSHIP 41, RANGE 24

STATEMENT OF EVIDENCE

ALL OF THE ORIGINAL BEARING TREES ARE NOW GONE.

THE AREA RESIDENTS HAVE NO KNOWLEDGE OF THE CORNER MARKER.

IN FEBRUARY OF 1979, M.B. RUDE RAN A SURVEY AROUND SECTIONS 10 THROUGH 15 AND 22 THROUGH 24 IN TOWNSHIP 41, RANGE 24 AND SECTIONS 7, 18, AND 19, TOWNSHIP 41, RANGE 23 TO LOCATE EXISTING LINES OF OCCUPATION AND MONUMENTATION.

IN MARCH, 1981, M.B. RUDE SET THIS CORNER BY SINGLE PROPORTIONAL MEASUREMENT BETWEEN THE NORTHEAST AND NORTHWEST CORNERS OF SECTION 22.

THERE IS A VERY OLD CROOKED NORTH-SOUTH FENCE ABOUT 110 FEET WEST OF THIS CORNER.

IN MARCH 2009 E.G. RUD AND SONS RELOCATED THIS CORNER SET BY M.B. RUDE AND ESTABLISHED KANABEC COUNTY COORDINATES USING G.P.S. EQUIPMENT.