

# CERTIFICATE OF LOCATION OF GOVERNMENT CORNER

NORTHEAST Corner of Section 21, Township 41, Range 24, 4TH P.M.

STATE OF MINNESOTA, County of KANABEC

At the corner location shown on the sketch:  
On 05/07/2003 Set a Kanabec County Monument.

Kanabec County U.S. Survey Feet Coordinates  
NAD 1983, HARN 1996 Adjustment  
Obtained by RTK GPS Observation

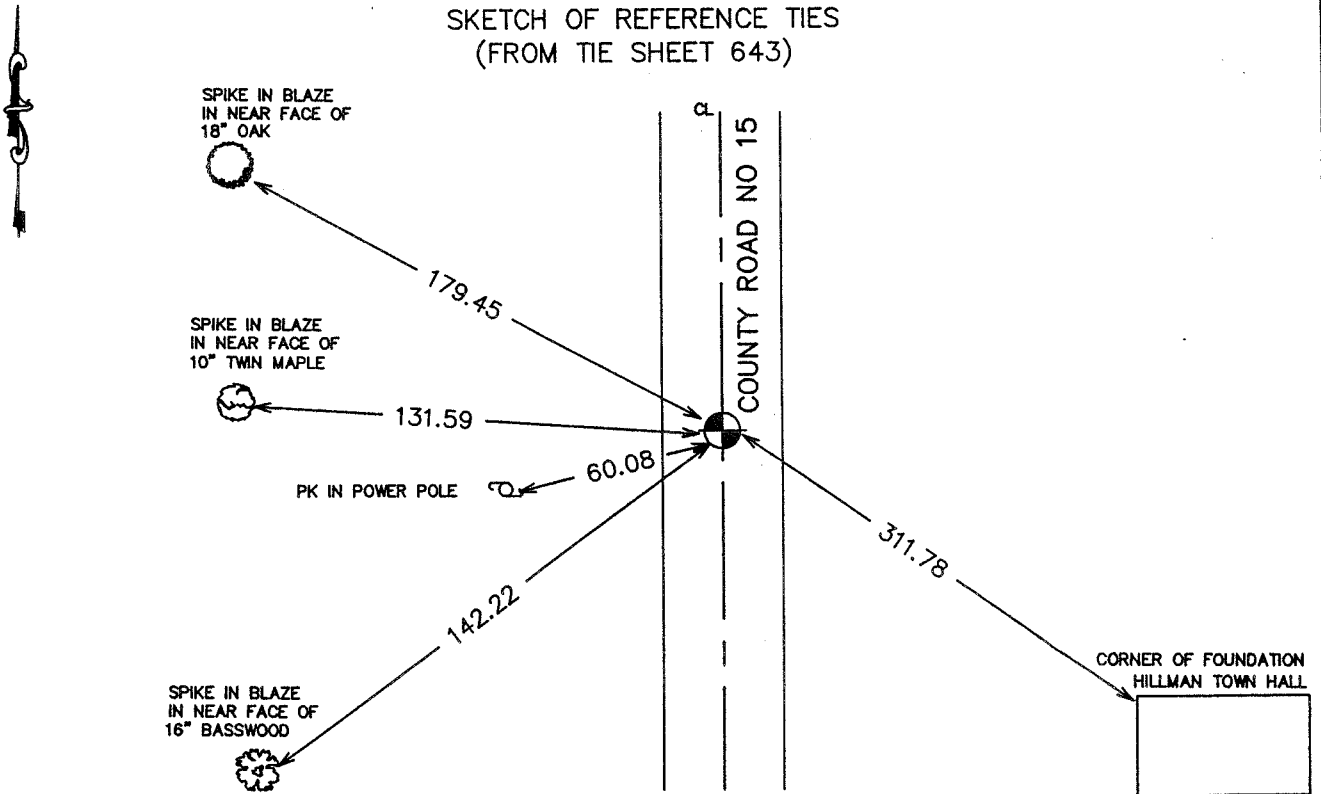
Northing= 207889.135

Easting= 380557.438

Note: NAD 1983, HARN 1996 Adjustment  
coordinates are NOT compatible with  
NAD 1983 coordinates

Note: 1 Meter=3937/1200 U.S. Survey Feet

SKETCH OF REFERENCE TIES  
(FROM TIE SHEET 643)



Statement of evidence relative to this corner location is on back of page.

I hereby certify that this document and the data contained herein was prepared by me or under my direct supervision.

\_\_\_\_\_  
Signature Date

Registration No. \_\_\_\_\_

Land Surveyor,       Professional Engineer

County Surveyor,       County Engineer

## OFFICE OF THE COUNTY RECORDER

County of \_\_\_\_\_

I hereby certify that this document was filed in the County Recorder's office at \_\_\_\_\_ M. on the

\_\_\_\_\_ day of \_\_\_\_\_ A.D., 20\_\_\_\_

County Recorder \_\_\_\_\_

BY \_\_\_\_\_ Deputy

**DOCUMENT NO.** \_\_\_\_\_

## STATEMENT OF EVIDENCE

(FROM TIE SHEET 643, DATED 9-25-80)

All of the original bearing trees are now gone.

There is a road order filed in 1903 for a road 4 rods surveyed and laid out by John Nelson, County Surveyor, along the west line of Sections 10, 15, and 22. The County Highway Plans show this road was regraded in the same location.

In February, 1979, I ran a survey along the west line of Sections 10, 15, and 22, and located the lines of occupation. This corner falls on a north-south road bed west. There is a road order for a 4 road laid out on file and dated June 28, 1920, from the northwest corner of Section 22 west along the section line to the north quarter corner of Section 21.

In July, 1980, I made an excavation with a backhoe 15 feet east-west and 20 feet north-south, 8 feet deep. No evidence was found in the excavation.

I accepted the center line of the north-south county road and old road bed west extended east as the best available evidence of the original corner location, as it fits the road order from 1903 and 1920, the accepted lines of occupation, and proportional measurement north and south.

(FROM TIE SHEET 643, DATED 12-30-92)

This corner was set and a Certificate was filed in 1981.

In November of 1992, in a survey along the east lines of Sections 9, 16, and 21, we searched for the cast iron monument set in 1980, but found no monument. We reset this corner from the ties on file.

(2003)

On May 7th, 2003, we set a Kanabec County Monument from ties and survey by M. B. Rude dated 12-7-92 for Kanabec County Highway Department. We established Kanabec County coordinates on this position using G.P.S. equipment.