

CERTIFICATE OF LOCATION OF GOVERNMENT CORNER

EAST QUARTER Corner of Section 21, Township 41, Range 24, 4TH P.M.

STATE OF MINNESOTA, County of KANABEC

At the corner location shown on the sketch:
On 05/07/2003 Set a Kanabec County Monument.

Kanabec County U.S. Survey Feet Coordinates
NAD 1983, HARN 1996 Adjustment
Obtained by RTK GPS Observation

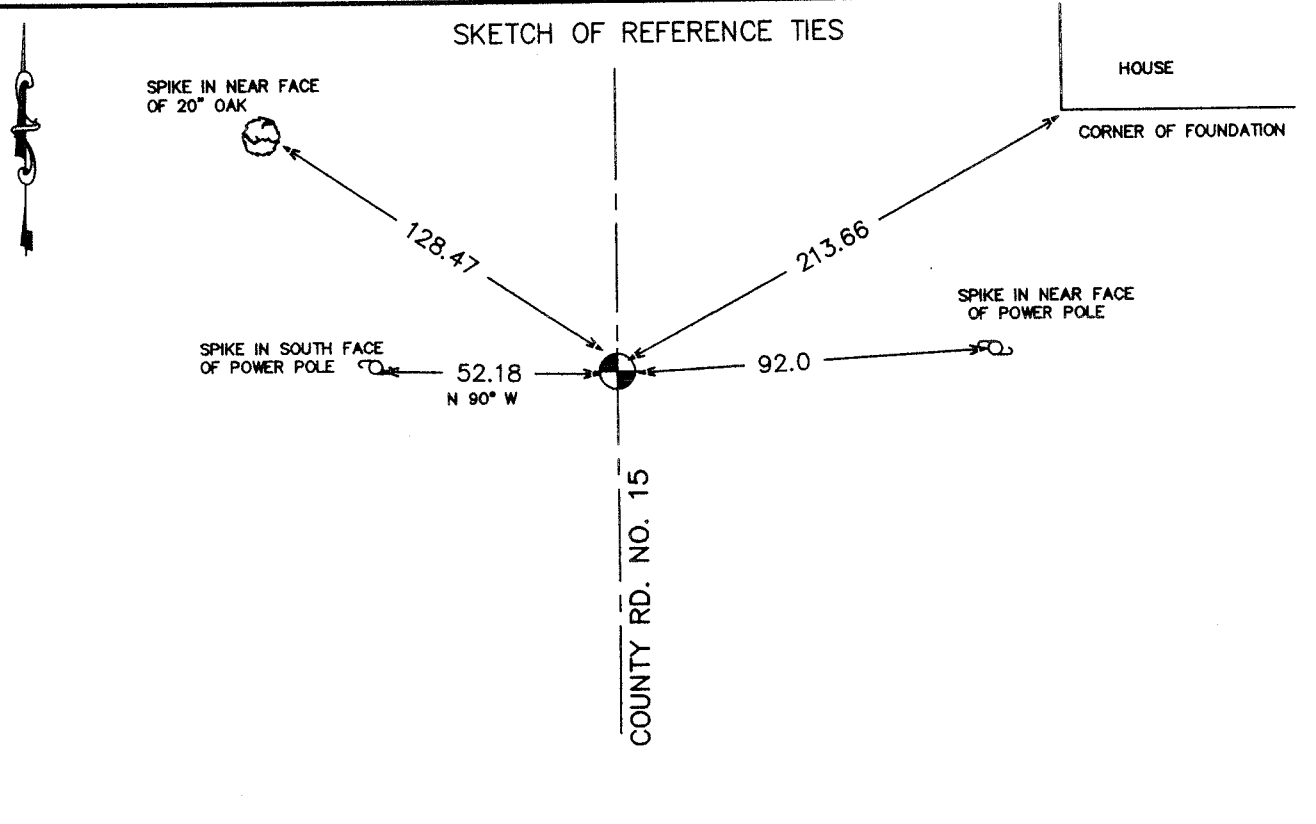
Northing= 205246.987

Easting= 380426.901

Note: NAD 1983, HARN 1996 Adjustment
coordinates are NOT compatible with
NAD 1983 coordinates

Note: 1 Meter=3937/1200 U.S. Survey Feet

SKETCH OF REFERENCE TIES



Statement of evidence relative to this corner location is on back of page.

I hereby certify that this document and the data contained herein was prepared by me or under my direct supervision.

Ernest Blud 8-03-2004
Signature Date

Registration No. 9808

Land Surveyor, Professional Engineer

County Surveyor, County Engineer

OFFICE OF THE COUNTY RECORDER

County of _____

I hereby certify that this document was filed in the County Recorder's office at _____ M. on the _____ day of _____ A.D., 20____

County Recorder _____

BY _____ Deputy

DOCUMENT NO. _____

STATEMENT OF EVIDENCE

(from tie sheet dated 9-25-80)

All of the original Government bearing trees are now gone.

There is a road order filed in 1903 for a 4 rod road surveyed and laid out by John Nelson, the County Surveyor, along the west line of Sections 10, 15, and 22. The County Highway plans show this road was regraded in the same location.

In February 1979, I ran a survey along the west line of Sections 10, 15, and 22 and located the lines of occupation. This corner falls on a north-south road and fence lines east and west. No excavation was made at this location because the area was cut in road construction and all evidence removed.

I set this corner in the center line of the north-south county road and fence line east and west, as it fits the road order from 1903 and the accepted lines of occupation.

(from tie sheet 636, dated 12-30-92)

This corner was set and a certificate filed in 1981. In November of 1992, in a survey along the east lines of Sections 9, 16, and 21, we found the cast iron monument per the certificate on file.

On May 7, 2003, we set a Kanabec County monument using ties and a survey by MB Rude dated 12-7-1992 for the Kanabec County Highway Department. We established Kanabec County coordinates using GPS equipment.