

# CERTIFICATE OF LOCATION OF GOVERNMENT CORNER

SOUTH QUARTER Corner of Section 22, Township 41, Range 24, 4TH P.M.

STATE OF MINNESOTA, County of KANABEC

2 2/3" CAST IRON MONUMENT DOWN 0.7'±

Kanabec County U.S. Survey Feet Coordinates  
NAD 1983, HARN 1996 Adjustment  
Obtained by RTK GPS Observation

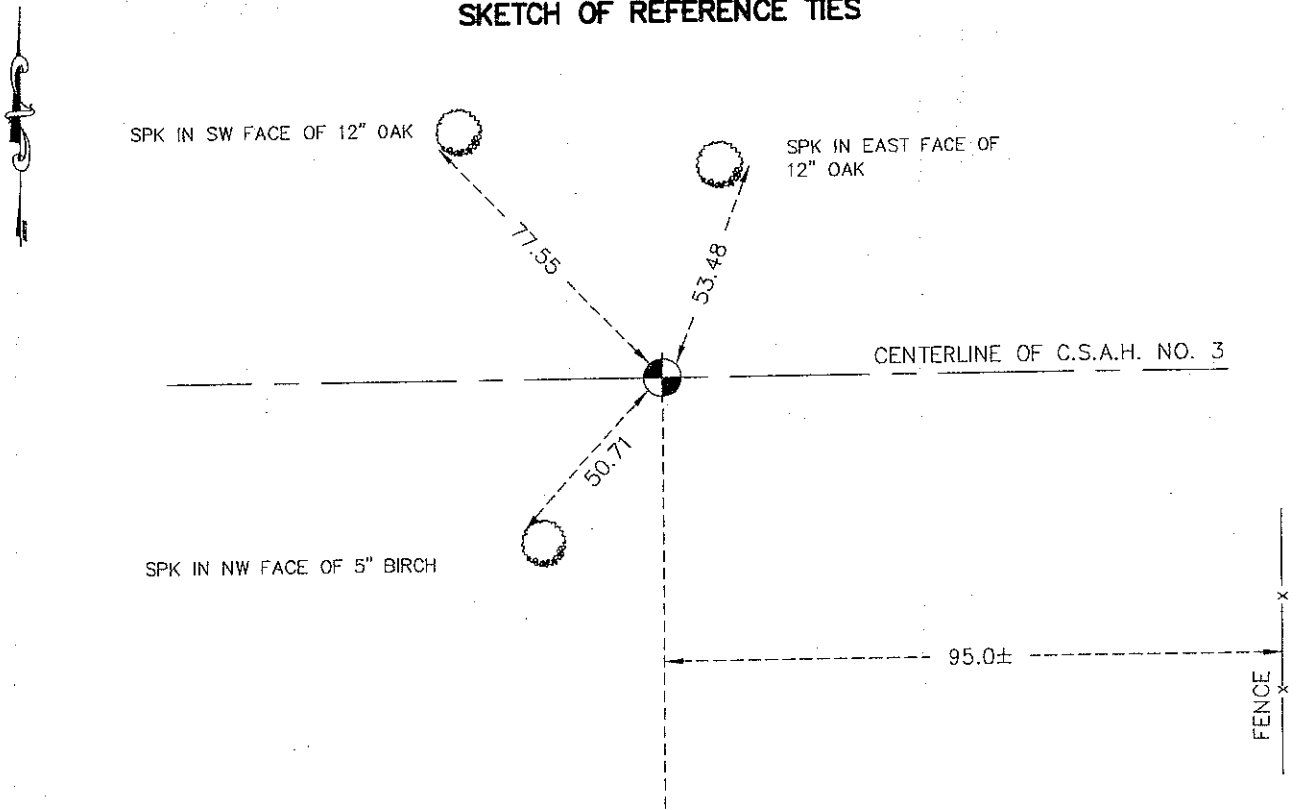
Northing= 202547.614

Easting= 382981.382

Note: NAD 1983, HARN 1996 Adjustment  
coordinates are NOT compatible with  
NAD 1983 coordinates

Note: 1 Meter=3937/1200 U.S. Survey Feet

### SKETCH OF REFERENCE TIES



Statement of evidence relative to this corner location is on back of page.

I hereby certify that this document and the data contained herein was prepared by me or under my direct supervision.

Ernest J. Rud 4-29-2009  
Signature Date

Registration No. 9808

Land Surveyor,  Professional Engineer  
 County Surveyor,  County Engineer

### OFFICE OF THE COUNTY RECORDER

County of \_\_\_\_\_

I hereby certify that this document was filed in the County Recorder's office at \_\_\_\_\_ M. on the \_\_\_\_\_ day of \_\_\_\_\_ A.D., 20\_\_\_\_

County Recorder \_\_\_\_\_

BY \_\_\_\_\_ Deputy

DOCUMENT NO. \_\_\_\_\_

S1/4 CORNER SECTION 22, TOWNSHIP 41, RANGE 24

**STATEMENT OF EVIDENCE**

ALL OF THE ORIGINAL BEARING TREES ARE NOW GONE.

JOHN NELSON'S COUNTY SURVEYORS RECORDS FROM 1901, SHOW NEW TIES TO THIS CORNER. THESE TIES ARE NOW GONE.

IN FEBRUARY, 1979, M.B. RUDE RAN A SURVEY ALONG THE SOUTH LINE OF SECTIONS 22, 23 AND 24 AND LOCATED THE LINES OF OCCUPATION. THIS CORNER FALLS IN THE CENTER LINE OF AN EAST-WEST COUNTY HIGHWAY.

IN JULY, 1980 M.B. RUDE MADE AN EXCAVATION WITH A BACKHOE AND AT 5 FEET BELOW THE SURFACE HE FOUND A GRANITE STONE WITH AN "X" CUT IN THE TOP FROM NELSON'S SURVEY FROM 1901.

THIS CORNER IS 95 FEET WEST OF A FENCE LINE SOUTH, BUT IS WITHIN 7 FEET OF A SPLIT OF THE SOUTH LINE.

IN MARCH 2009 E.G. RUD AND SONS FOUND THE CAST IRON MONUMENT SET BY M.B. RUDE IN JULY 1980 AND ESTABLISHED KANABEC COUNTY COORDINATES ON THIS LOCATION USING G.P.S. EQUIPMENT.