

CERTIFICATE OF LOCATION OF GOVERNMENT CORNER

EAST QUARTER Corner of Section 28, Township 41, Range 24, 4TH P.M.

STATE OF MINNESOTA, County of KANABEC

At the corner location shown on the sketch:
#7 REBAR WITH ALUMINUM CAP

Kanabec County U.S. Survey Feet Coordinates
NAD 1983, HARN 1996 Adjustment
Obtained by RTK GPS Observation

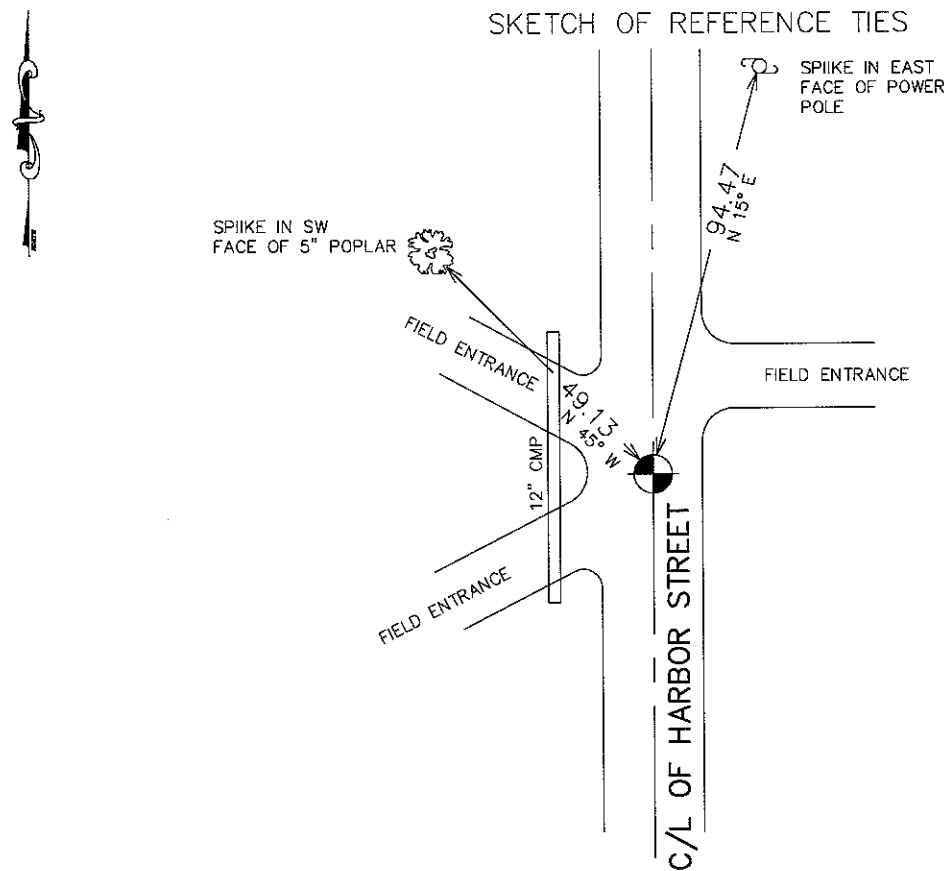
Northing= 199959.54

Easting= 380192.83

Note: NAD 1983, HARN 1996 Adjustment
coordinates are NOT compatible with
NAD 1983 coordinates

Note: 1 Meter=3937/1200 U.S. Survey Feet

SKETCH OF REFERENCE TIES



Statement of evidence relative to this corner location is on back of page.

I hereby certify that this document and the data contained herein was prepared by me or under my direct supervision.

Ernest Lund
Signature

4-26-2010
Date

Registration No. 9808

Land Surveyor, Professional Engineer

County Surveyor, County Engineer

OFFICE OF THE COUNTY RECORDER

County of _____

I hereby certify that this document was filed in the County Recorder's office at _____ M. on the

_____ day of _____ A.D., 20__

County Recorder _____

BY _____ Deputy

DOCUMENT NO. _____

E 1/4 CORNER, SEC. 28, T41, R24

STATEMENT OF EVIDENCE

12-27-1855: ORIGINAL CORNER WAS SET BY DEPUTY SURVEYOR ISAAC BANKER AND AN ASPEN AND A WHITE OAK WERE USED AS BEARING TREES. NO VISIBLE EVIDENCE FOR CORNER POST OR BEARING TREES REMAIN TODAY.

NO RECORDS OF ANY SUBSEQUENT SURVEYS COULD BE FOUND AT THE KANABEC COUNTY OFFICES.

5-27-1943: ROAD ORDER FILED BY HILLMAN TWP OPENING A 4 ROD ROAD FROM THE NE TO THE E 1/4 CORNER OF SEC. 28. NO SURVEY WAS DONE FOR THIS ROAD.

TODAY THERE IS A TWP ROAD ALONG THE EAST LINE OF THE NE 1/4 AND ENDS JUST SOUTH OF THE OCCUPATION LINES RUNNING EAST AND WEST.

ON JUNE 10, 2009 AN EXCAVATION WAS MADE WITH THE COUNTY BACKHOE AT THE INTERSECTION OF THE CENTERLINE OF THE ROAD AND THE OCCUPATION LINES RUNNING EAST AND WEST. THE EXCAVATION WAS 8 FEET EAST AND WEST, 20 FEET NORTH AND SOUTH AND 2.5 FEET DEEP WHICH EXTENDED 9 INCHES INTO THE ORIGINAL GROUND. NO EVIDENCE WAS FOUND. THEREFORE THE LOCATION AT THE CENTERLINE OF THE ROAD AND THE OCCUPATION LINES WAS CONSIDERED TO BE EVIDENCE FOR THE PERPETUATION OF THIS CORNER. MIKE NORGAARD (NW 1/4, SEC. 27) AND JEFF NORGAARD (SE 1/4, SEC. 28) LAND OWNERS HAVE ALWAYS THOUGHT THIS LOCATION TO BE THE SECTION LINE.

A #7 REBAR 2 FEET LONG WITH AN ALUMINUM CAP WAS SET, TIES TAKEN AND KANABEC COUNTY COORDINATES ESTABLISHED USING G.P.S. EQUIPMENT.