

4124082

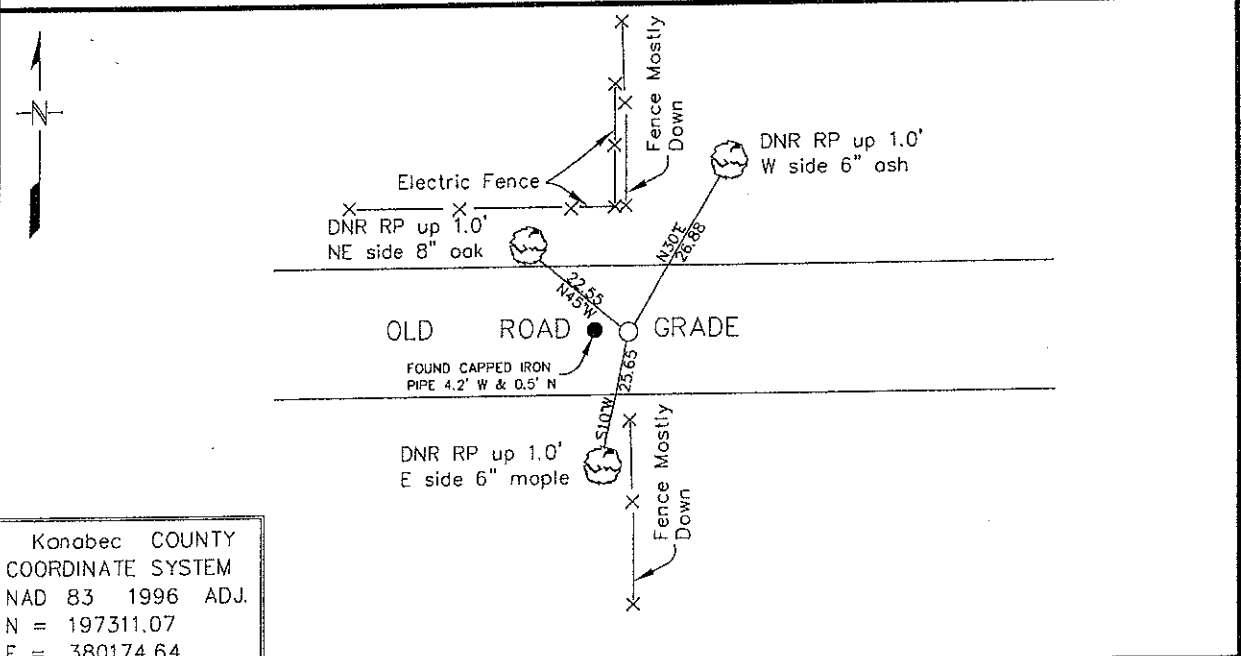
Index No. _____

CERTIFICATE OF LOCATION OF GOVERNMENT CORNER

Northeast Corner of Section 33, Township 41, Range 24
4th Principal Meridian, State of Minnesota, County of Kanabec

At the corner location shown on the sketch:

- On 5/24/2010 found a CAPPED IRON PIPE 4.2' W & 0.5' N OF
DATE POSITION
 left monument as found, lowered monument, removed monument (explain)
- On 6/1/2010 Placed a 3/4" X 24" rebar with DNR cap marked 19839 on
DATE centerline old road and downed fence north



Kanabec COUNTY
COORDINATE SYSTEM
NAD 83 1996 ADJ.
N = 197311.07
E = 380174.64

Statement of evidence for this corner location is on back of this page.

July 1, 2010
AMA00321

I certify that this document was researched and prepared by me or under my direct supervision.

SIGNATURE David B. Neth DATE 12/17/2010 License Number 19839

Title: Land Surveyor Professional Engineer County Surveyor County Engineer

Statement of Evidence for the Northeast Corner of Section 33,
Township 41 North, Range 24 West of the 4th Principal Meridian.
Kanabec County, Minnesota

- 1855 Deputy Surveyor Banker notes indicate North between Section 33 & 34, Va 11° 13', At 40.00 Chains Set ¼ Section Post with the following ties: Blk Oak 10" S84°E 12 links, W Birch 14" S30°W 30 links; At 80.00 Chains Set Post to Secs 27, 28, 33 & 34 with the following ties: W Pine 10" N 28°E 15 links, Aspen 7" N80°W 41 links, Aspen 9" S38°W 34 links, Blk Oak 10" S87°E 50 links. Neither the monument nor the accessories were found during this survey.
- 2010 We met with County Surveyor Ernest Rud and he informed us that he had previously set a ½" iron pipe at this corner at the centerline of the road and on a newer fence line to the north. He informed us to disregard the position of the iron pipe in relationship to the true corner position.
We set this corner at the centerline of the old road grade and in line with a downed, old fence line to the north

For more information concerning this survey contact Minnesota DNR.