

# CERTIFICATE OF LOCATION OF GOVERNMENT CORNER

East Quarter Corner of Section 33, Township 41, North, Range 24 West,  
4th Principal Meridian, Kanabec County, State of Minnesota

At the corner location shown on the sketch:  
On 11/30/2018 set a 7/8" x 36" rebar monument with aluminum cap at a lost position.

Kanabec County U.S. Survey Feet Coordinates  
NAD 1983, HARN 1996 Adjustment  
Obtained by RTK GPS observation  
Northing: 194728.9378  
Easting: 380403.0732

Note: NAD 1983, HARN 1996 Adjustment coordinates are NOT compatible with NAD 1983 coordinates

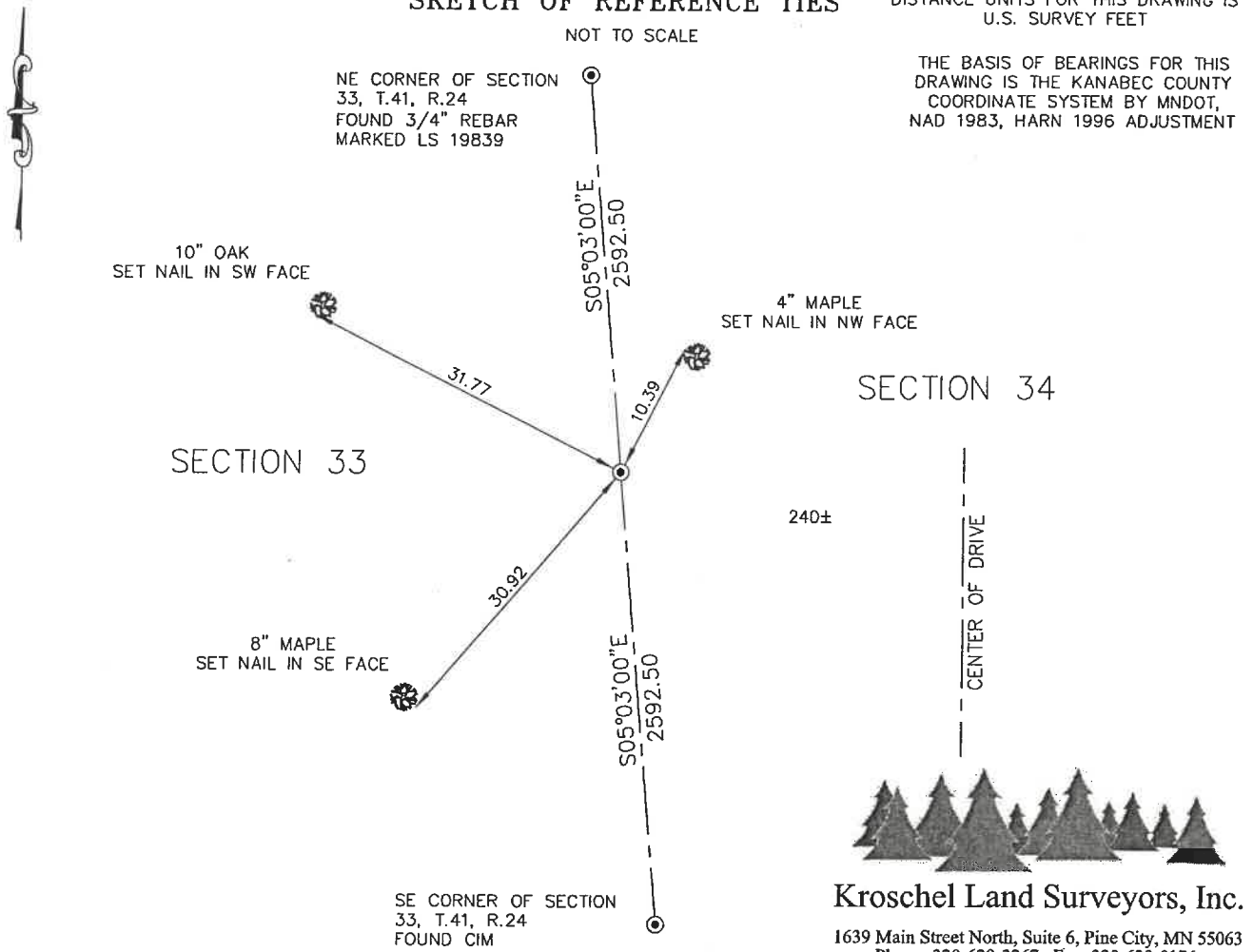
Note: 1 Meter = 3937/1200 U.S. Survey Feet

## SKETCH OF REFERENCE TIES

DISTANCE UNITS FOR THIS DRAWING IS U.S. SURVEY FEET

NOT TO SCALE

THE BASIS OF BEARINGS FOR THIS DRAWING IS THE KANABEC COUNTY COORDINATE SYSTEM BY MNDOT, NAD 1983, HARN 1996 ADJUSTMENT



**Kroschel Land Surveyors, Inc.**

1639 Main Street North, Suite 6, Pine City, MN 55063  
Phone: 320-629-3267 Fax: 320-629-0176

Statement of evidence relative to this corner location is on back of page.

I hereby certify that this report was prepared by me or under my direct supervision, that the United States public land survey monument record is correct and complete to the best of my knowledge and belief, and that I am a duly Licensed Land Surveyor under the laws of the State of Minnesota.

*Tyler J. Kroschel*

Tyler J. Kroschel, County Surveyor

1-27-2021

Date

License No. 44490

## OFFICE OF THE COUNTY RECORDER

County of Kanabec

I hereby certify that this document was filed in the County Recorder's office at \_\_\_\_\_ .M. on the \_\_\_\_\_ day of \_\_\_\_\_ A.D., 20\_\_\_\_

County Recorder \_\_\_\_\_

, Deputy

DOCUMENT NO. \_\_\_\_\_

Statement of Evidence:

In January of 1856, Deputy Surveyor Isaac Banker set a post to mark the East Quarter Corner of Section 33 , Township 41 North, Range 24 West, 4th Principal Meridian.

Reference ties were taken to:

10 inch Black Oak at South 84 degrees East a distance of 12 links

14 inch White Birch at South 30 degrees West a distance of 30 links

All of the original Government corner evidence was searched for. None was found.

There is no resurvey information on file for this corner.

In November 2018, I made a survey around Section 33, Township 41 North, Range 24 West, 4th Principal Meridian for Todd Hinrichs to locate existing monuments, lines of occupation and establish search areas.

On 11/30/2018 a search was made with a magnetic locator at a lost position. No evidence of corner was found. I determined the corner lost and set a 7/8" x 36" Rebar with aluminum cap on-line and halfway between the Northeast and Southeast corners of Section 33.

Established reference ties and assigned Kanabec County Coordinates. This location was determined to be the best available evidence of the original corner monument location.



**Kroschel Land Surveyors, Inc.**

1639 Main Street North, Suite 6, Pine City, MN 55063  
Phone: 320-629-3267 Fax: 320-629-0176