

# CERTIFICATE OF LOCATION OF GOVERNMENT CORNER

NORTHEAST On line Between 15, Township 41, Range 24, 4TH P.M.

STATE OF MINNESOTA, County of KANABEC

At the corner location shown on the sketch:  
 SET A KANABEC COUNTY MONUMENT  
 AND ESTABLISHED G.P.S. COORDINATES ON ITS LOCATION.

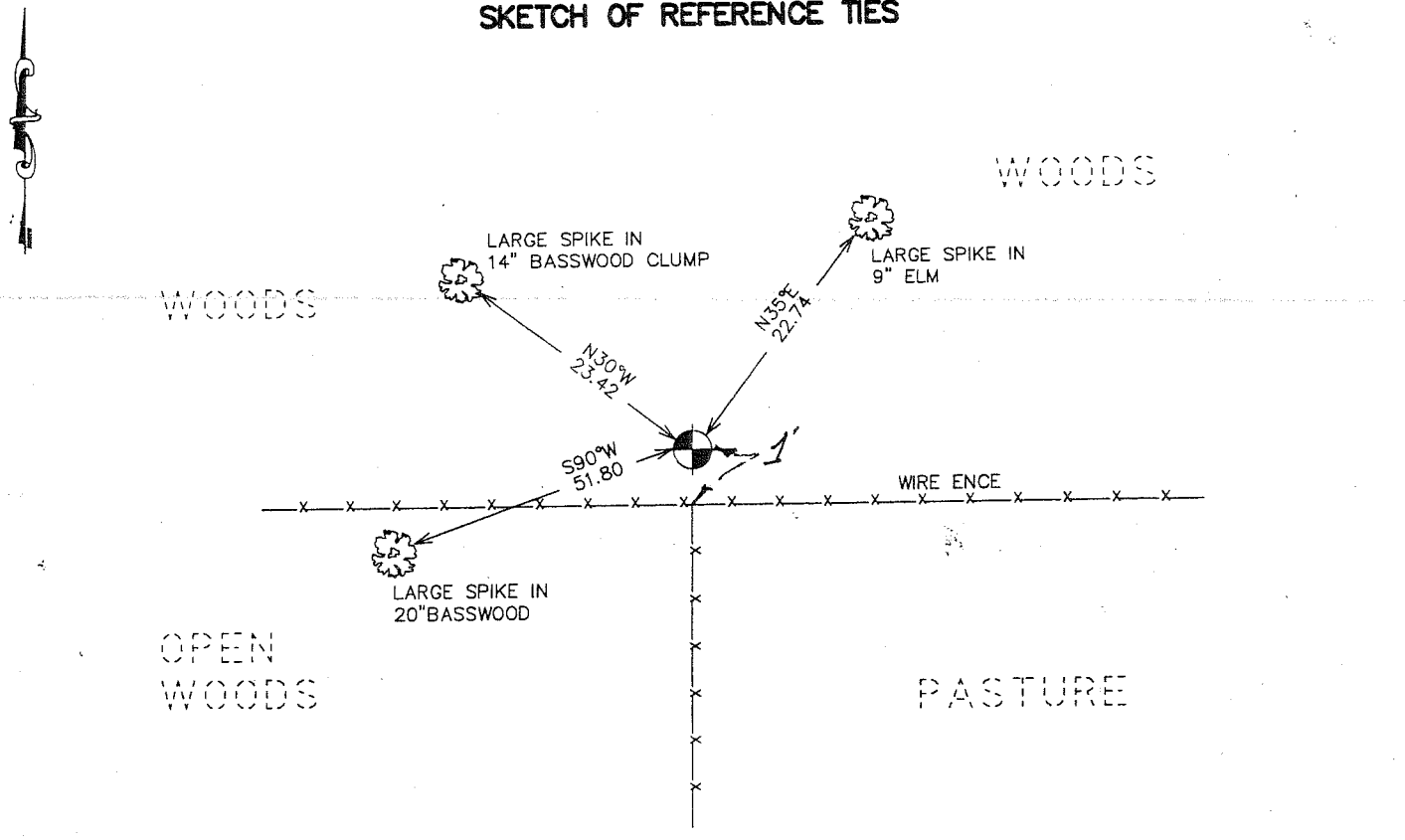
Kanabec County U.S. Survey Feet Coordinates  
 NAD 1983, HARN 1996 Adjustment  
 Obtained by RTK GPS Observation

Northing= 213098.080  
 Easting= 385988.736

Note: NAD 1983, HARN 1996 Adjustment  
 coordinates are NOT compatible with  
 NAD 1983 coordinates

Note: 1 Meter=3937/1200 U.S. Survey Feet

### SKETCH OF REFERENCE TIES



Statement of evidence relative to this corner location is on back of page.

I hereby certify that this document and the data contained herein was prepared by me or under my direct supervision.

*Ernest Alud* 2-22-2007  
Signature Date

Registration No. Minn No 9808

Land Surveyor,  Professional Engineer  
 County Surveyor,  County Engineer

### OFFICE OF THE COUNTY RECORDER

County of \_\_\_\_\_

I hereby certify that this document was filed in the County Recorder's office at \_\_\_\_\_ M. on the \_\_\_\_\_ day of \_\_\_\_\_ A.D., 20\_\_\_\_

County Recorder \_\_\_\_\_  
 BY \_\_\_\_\_ Deputy

DOCUMENT NO. \_\_\_\_\_

NORTHEAST CORNER SECTIONS 15, T41, R24

**STATEMENT OF EVIDENCE**

THE ORIGINAL CORNER WAS SET DECEMBER 26, 1855 BY DEPUTY SURVEYOR ISAAC BANKER. 2 ASPEN TREES WERE NOTED FOR BEARING TREES. ANY EVIDENCE FOR THE CORNER OR BEARING TREES NO LONGER REMAIN.

NO OTHER RECORDS OF SURVEYS FOR THIS CORNER COULD BE FOUND AT KANABEC COUNTY OFFICES.

THIS CORNER FALLS IN A WOODED AREA AT THE INTERSECTION OF FENCES RUNNING ~~WEST~~—SOUTH AND EAST—WEST FROM THIS CORNER.

DALE ROESCHLEIN OWNER OF LAND IN THE NORTHWEST QUARTER OF SECTION 14 AND IN THE NORTHEAST QUARTER OF SECTION 15 TESTIFIED THAT THE OWNERS OF THE LAND HAD FENCED THIS AREA OVER 50 YEARS AGO IN AGREEMENT WITH ALL ADJOINING PROPERTY OWNERS.

THIS FENCE CORNER FITS WITHIN 25 FEET OF A PROPORTIONAL MEASUREMENT FROM THE NORTHWEST CORNER OF SECTION 15 TO THE NORTHEAST CORNER OF SECTION 13. WE ACCEPTED THE FENCE LINES AS THE BEST LOCATION FOR THE PERPETUATION OF THIS CORNER.

IN JANUARY 2007 E.G. RUD AND SONS SET A KANABEC COUNTY MONUMENT, TOOK TIES AND ESTABLISHED KANABEC COUNTY COORDINATES ON THIS MONUMENT.