

CERTIFICATE OF LOCATION OF GOVERNMENT CORNER

EAST QUARTER Corner of Section 15, Township 41, Range 24, 4TH P.M.

STATE OF MINNESOTA, County of KANABEC

At the corner location shown on the sketch:

SET #7 REBAR
AND ESTABLISHED G.P.S. COORDINATES ON ITS LOCATION.

Kanabec County U.S. Survey Feet Coordinates
NAD 1983, HARN 1996 Adjustment
Obtained by RTK GPS Observation

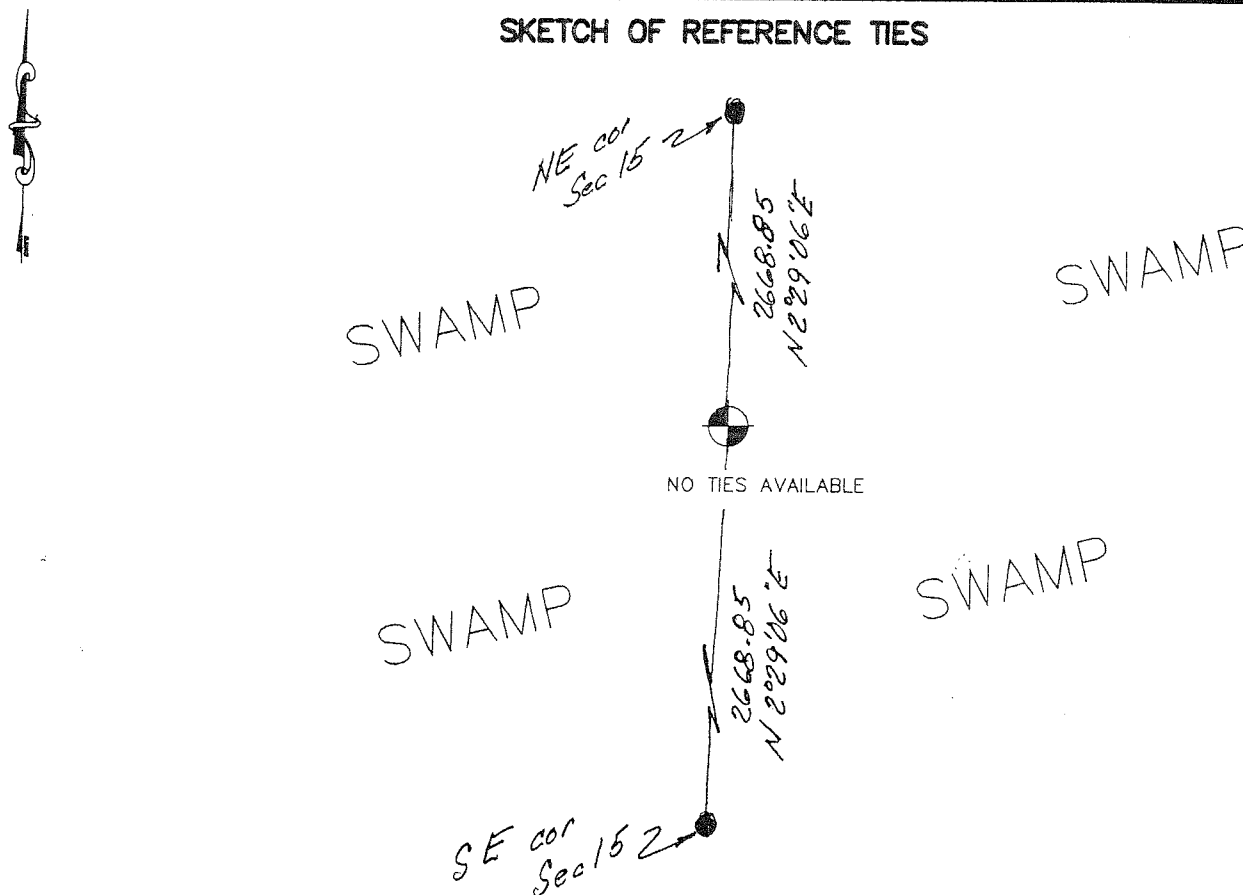
Northing= 210431.739

Easting= 385873.016

Note: NAD 1983, HARN 1996 Adjustment
coordinates are NOT compatible with
NAD 1983 coordinates

Note: 1 Meter=3937/1200 U.S. Survey Feet

SKETCH OF REFERENCE TIES



Statement of evidence relative to this corner location is on back of page.

I hereby certify that this document and the data contained herein was prepared by me or under my direct supervision.

Ernest J. Reed
Signature

1-24-2007
Date

Registration No. Minn No 9808

- Land Surveyor, Professional Engineer
- County Surveyor, County Engineer

OFFICE OF THE COUNTY RECORDER

County of _____

I hereby certify that this document was filed in the County Recorder's office at _____ M. on the

_____ day of _____ A.D., 20 _____

County Recorder _____

BY _____ Deputy

DOCUMENT NO. _____

EAST QUARTER CORNER SECTION 15, T41, R24

STATEMENT OF EVIDENCE

THE ORIGINAL CORNER WAS SET BY DEPUTY SURVEYOR ISAAC BANKER ON DECEMBER 26, 1855. 2 ASPEN TREES WERE NOTED AS BEARING TREES. EVIDENCE TO THE CORNER OR BEARING TREES NO LONGER REMAIN.

NO OTHER RECORDS OF SURVEYS COULD BE FOUND AT THE KANABEC COUNTY OFFICE. THE ADJOINING LAND OWNERS BEING DALE ROESCHLEIN WHO OWNED LAND BOTH EAST AND WEST OF THE CORNER TESTIFIED HE DIDN'T KNOW WHERE THIS CORNER WAS.

THEREFORE WE RESET THIS CORNER BY LOST MEATHODS BEING SPLIT BETWEEN THE NORTHEAST CORNER AND SOUTHEAST CORNER OF SECTION 15.

A #7 REBAR WITH AN ALUMINUM CAP WAS SET AND KANABEC COUNTY COORDINATES ESTABLISHED USING G.P.S. EQUIPMENT.