

CERTIFICATE OF LOCATION OF GOVERNMENT CORNER

NORTHWEST Corner of Section 23, Township 41, Range 24, 4TH P.M.

STATE OF MINNESOTA, County of KANABEC

At the corner location shown on the sketch:

FOUND THIS MONUMENT
AND ESTABLISHED G.P.S. COORDINATES ON ITS LOCATION.

Kanabec County U.S. Survey Feet Coordinates
NAD 1983, HARN 1996 Adjustment
Obtained by RTK GPS Observation

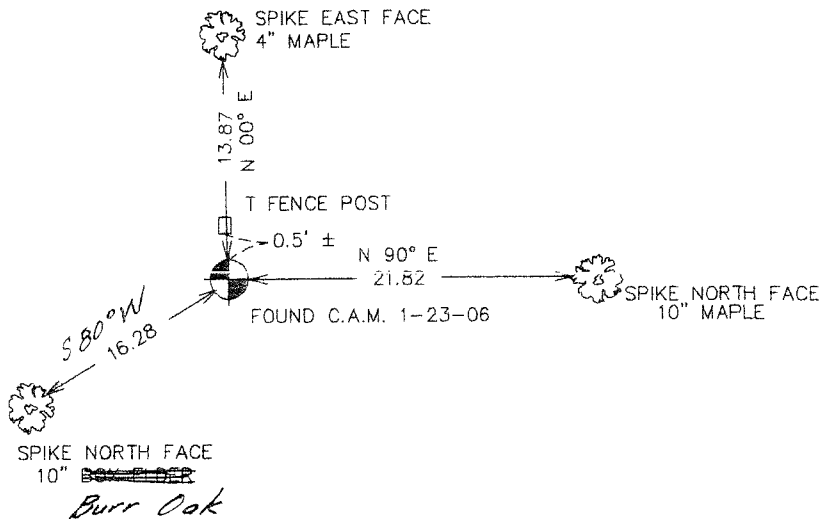
Northing= 207765.40

Easting= 385757.29

Note: NAD 1983, HARN 1996 Adjustment
coordinates are NOT compatible with
NAD 1983 coordinates

Note: 1 Meter=3937/1200 U.S. Survey Feet

SKETCH OF REFERENCE TIES



Statement of evidence relative to this corner location is on back of page.

I hereby certify that this document and the data contained herein was prepared by me or under my direct supervision.

Ernest Alred 1-03-2007
Signature Date

Registration No. Minn No 9808

Land Surveyor, Professional Engineer

County Surveyor, County Engineer

OFFICE OF THE COUNTY RECORDER

County of _____

I hereby certify that this document was filed in the County Recorder's office at _____ M. on the

_____ day of _____ A.D., 20__

County Recorder _____

BY _____ Deputy

DOCUMENT NO. _____

NORTHWEST CORNER SECTION 23, T41, R24

STATEMENT OF EVIDENCE

ALL OF THE ORIGINAL BEARING TREES ARE NOW GONE.

THERE ISN'T ANY RESURVEY DATA FOR THIS CORNER ON FILE.

THE AREA RESIDENTS HAVE NO KNOWLEDGE OF THE CORNER MARKER.

IN FEBRUARY, 1979, M.B. RUDE RAN A SURVEY AROUND SECTIONS 10 THROUGH 15, 22 THROUGH 24, TOWNSHIP 41, RANGE 24, AND SECTIONS 7, 18, AND 19, TOWNSHIP 41, RANGE 23, AND LOCATED THE EXISTING LINES OF OCCUPATION AND MONUMENTATION.

THERE ARE NO LINES OF OCCUPATION NEAR THIS CORNER.

IN MARCH, 1981, M.B. RUDE SET THIS CORNER BY DOUBLE PROPORTIONAL MEASUREMENT FROM THE WEST QUARTER OF SECTION 23 TO THE WEST QUARTER OF SECTION 11 AND FROM THE NORTHWEST CORNER OF SECTION 22 TO THE NORTHEAST CORNER OF SECTION 23.

IN JANUARY 2006 E.G. RUD RAN A SURVEY AROUND SECTIONS 1-10 AND LOCATED THIS CORNER. NEW TIES WERE TAKEN AND KANABEC COUNTY COORDINATES ESTABLISHED ON THIS MONUMENT USING G.P.S. EQUIPMENT.