

CERTIFICATE OF LOCATION OF GOVERNMENT CORNER

EAST QUARTER Corner of Section 22, Township 41, Range 24, 4TH P.M.

STATE OF MINNESOTA, County of KANABEC

A 1/2" IRON PIPE

Kanabec County U.S. Survey Feet Coordinates
 NAD 1983, HARN 1996 Adjustment
 Obtained by RTK GPS Observation

Northing= 205120.19

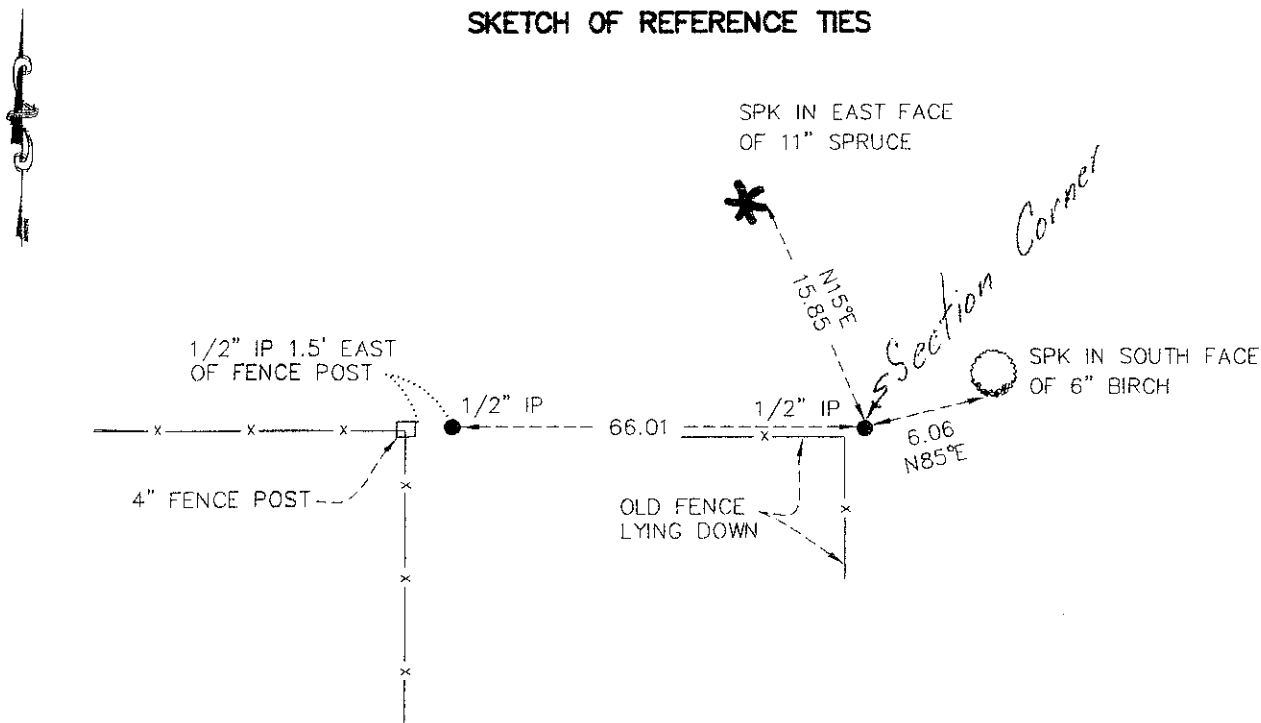
Easting= 385663.03

Revised
Coordinates

Note: NAD 1983, HARN 1996 Adjustment
 coordinates are NOT compatible with
 NAD 1983 coordinates

Note: 1 Meter=3937/1200 U.S. Survey Feet

SKETCH OF REFERENCE TIES



Statement of evidence relative to this corner location is on back of page.

I hereby certify that this document and the data contained herein was prepared by me or under my direct supervision.

Ernest J. Rud 6-02-2009
 Signature Date

Registration No. 9808

Land Surveyor, [] Professional Engineer
 [] County Surveyor, [] County Engineer

OFFICE OF THE COUNTY RECORDER

County of _____

I hereby certify that this document was filed in the County Recorder's office at _____ M. on the _____ day of _____ A.D., 20____

County Recorder _____

BY _____ Deputy

DOCUMENT NO. _____

E1/4 CORNER SECTION 22, TOWNSHIP 41, RANGE 24

STATEMENT OF EVIDENCE

ALL OF THE ORIGINAL BEARING TREES ARE NOW GONE.

THERE ISN'T ANY RESURVEY INFORMATION ON FILE FOR THIS CORNER.

THE AREA RESIDENTS HAVE NO KNOWLEDGE OF THE CORNER MARKER.

IN FEBRUARY, 1979, M.B. RUDE RAN A SURVEY AROUND SECTIONS 10 THROUGH 15, 22 THROUGH 24, TOWNSHIP 41, RANGE 24, AND SECTIONS 7, 18 AND 19, TOWNSHIP 41, RANGE 23, AND LOCATED THE EXISTING LINES OF OCCUPATION AND MONUMENTATION.

IN MARCH, 1981, M.B. RUDE SET THIS CORNER AT AN OLD FENCE CORNER WHICH HAS BEEN ACCEPTED AS THE CORNER LOCATION BY THE AREA RESIDENTS AND IS IN HARMONY WITH THE GOVERNMENT SURVEY AND THE OCCUPATION LINE IN SECTIONS 22 AND 23.

IN MARCH 2009 E.G. RUD AND SONS RELOCATED THIS CORNER SET BY M.B. RUDE AND ESTABLISHED KANABEC COUNTY COORDINATES USING G.P.S. EQUIPMENT.