

CERTIFICATE OF LOCATION OF GOVERNMENT CORNER

SOUTH QUARTER Corner of Section 23, Township 41, Range 24, 4TH P.M.

STATE OF MINNESOTA, County of KANABEC

A 2 3/4" BY 19" CAST IRON MONUMENT

Kanabec County U.S. Survey Feet Coordinates
 NAD 1983, HARN 1996 Adjustment
 Obtained by RTK GPS Observation

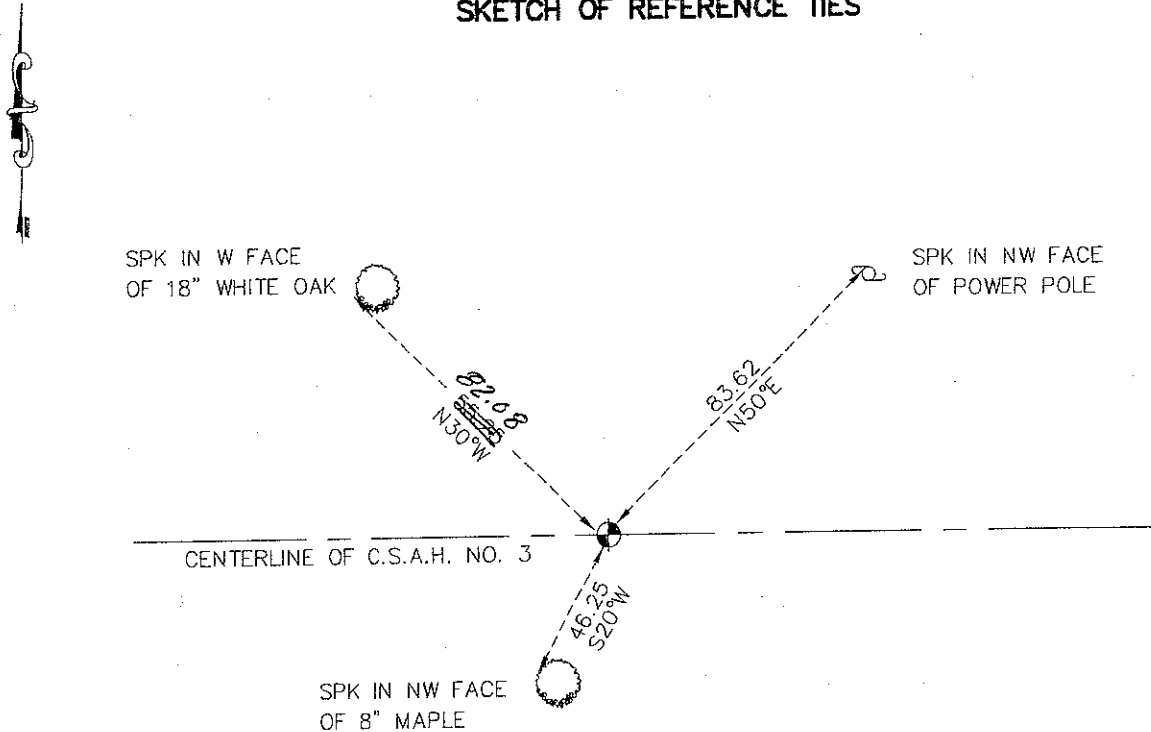
Northing= 202286.19

Easting= 388317.36

Note: NAD 1983, HARN 1996 Adjustment
 coordinates are NOT compatible with
 NAD 1983 coordinates

Note: 1 Meter=3937/1200 U.S. Survey Feet

SKETCH OF REFERENCE TIES



Statement of evidence relative to this corner location is on back of page.

I hereby certify that this document and the data contained herein was prepared by me or under my direct supervision.

Ernest Blund
 Signature

3-17-2009
 Date

Registration No. 9808

Land Surveyor, Professional Engineer

County Surveyor, County Engineer

OFFICE OF THE COUNTY RECORDER

County of _____

I hereby certify that this document was filed in the County Recorder's office at _____ M. on the

_____ day of _____ A.D., 20____

County Recorder _____

BY _____ Deputy

DOCUMENT NO. _____

S1/4 CORNER SECTION 23, TOWNSHIP 41, RANGE 24

STATEMENT OF EVIDENCE

ALL OF THE ORIGINAL BEARING TREES ARE NOW GONE.

THERE IS A ROAD ORDER ON FILE FOR A 4 ROD ROAD LAID OUT IN 1904; FROM THE SOUTHWEST CORNER OF SECTION 23 TO THE SOUTHEAST CORNER OF SECTION 24. THIS ROAD ORDER STATES NO SURVEYOR WAS EMPLOYED IN THE LAYING OUT OF THE ROAD AS THE GOVERNMENT SURVEY WAS PLAINLY VISIBLE.

IN FEBRUARY, 1979, M.B. RUDE RAN A SURVEY ALONG THE SOUTH LINE OF SECTIONS 22, 23, AND 24 TO LOCATED THE LINES OF OCCUPATION. THIS CORNER FALLS ON AN EAST-WEST COUNTY HIGHWAY AND A FENCE LINE NORTH.

THE COUNTY HIGHWAY PLANS SHOW THE ROAD WAS REBUILT IN THE ORIGINAL LOCATION.

IN JULY, 1980, M.B. RUDE MADE AN EXCAVATION WITH A BACKHOE AT THIS LOCATION. THE EXCAVATION WAS 15 FEET NORTH-SOUTH AND 30 FEET EAST-WEST, 6 FEET DEEP. NO EVIDENCE WAS FOUND IN THE EXCAVATION.

M.B. RUDE ACCEPTED THE CENTER LINE OF THE EAST-WEST COUNTY HIGHWAY AND FENCE LINE NORTH AS THE BEST AVAILABLE EVIDENCE OF THE ORIGINAL CORNER LOCATION AS IT FITS THE LOCATION IN THE ROAD ORDER FROM 1904, THE ACCEPTED LINES OF OCCUPATION AND IS WITHIN 1 FOOT OF A SPLIT OF THE SOUTH LINE OF SECTION 23.

IN MARCH 2009 E.G. RUD AND SONS RELOCATED THIS CORNER SET BY M.B. RUDE AND ESTABLISHED KANABEC COUNTY COORDINATES USING G.P.S. EQUIPMENT.