

# CERTIFICATE OF LOCATION OF GOVERNMENT CORNER

SOUTHEAST Corner of Section 22, Township 41, Range 24, 4TH P.M.

STATE OF MINNESOTA, County of KANABEC

At the corner location shown on the sketch:

FOUND THIS MONUMENT AND ESTABLISHED G.P.S. COORDINATES ON ITS LOCATION.

Kanabec County U.S. Survey Feet Coordinates  
NAD 1983, HARN 1996 Adjustment  
Obtained by RTK GPS Observation

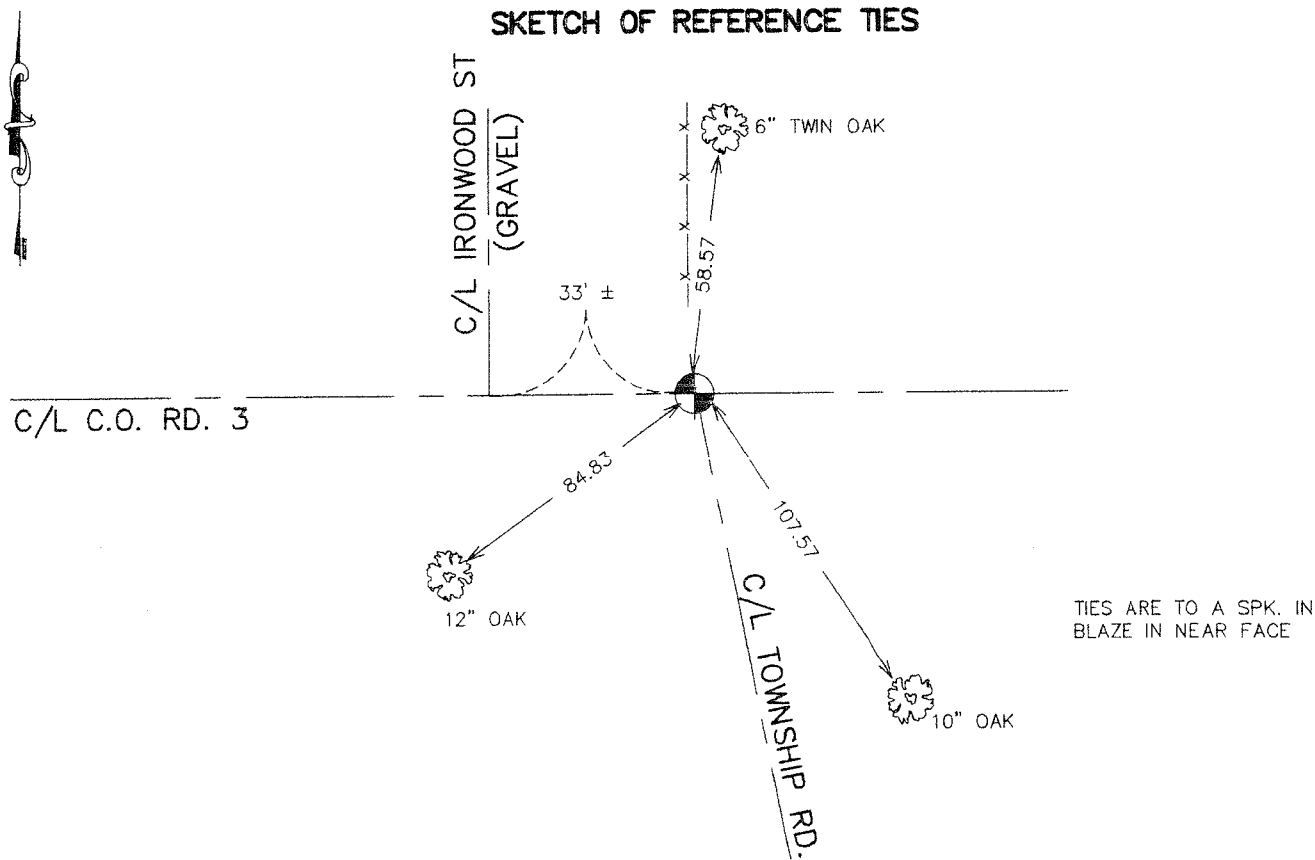
Northing= 202473.65

Easting= 385654.90

Note: NAD 1983, HARN 1996 Adjustment coordinates are NOT compatible with NAD 1983 coordinates

Note: 1 Meter=3937/1200 U.S. Survey Feet

### SKETCH OF REFERENCE TIES



Statement of evidence relative to this corner location is on back of page.

I hereby certify that this document and the data contained herein was prepared by me or under my direct supervision.

*Ernest Reed*  
Signature

1-03-2007  
Date

### OFFICE OF THE COUNTY RECORDER

County of \_\_\_\_\_

I hereby certify that this document was filed in the County Recorder's office at \_\_\_\_\_ M. on the \_\_\_\_\_ day of \_\_\_\_\_ A.D., 20 \_\_\_\_\_

County Recorder \_\_\_\_\_

BY \_\_\_\_\_ Deputy

Registration No. Minn No. 9808

Land Surveyor,  Professional Engineer

County Surveyor,  County Engineer

DOCUMENT NO. \_\_\_\_\_

## SOUTHEAST CORNER SECTION 22, T41, R24

### STATEMENT OF EVIDENCE

ALL OF THE ORIGINAL BEARING TREES ARE NOW GONE.

JOHN NELSON'S COUNTY SURVEYOR RECORDS FROM 1901 SHOW NEW TIES FOR THIS CORNER. THESE TIES ARE NOW GONE. THERE IS A ROAD ORDER ON FILE IN 1904 FOR A 4 ROD ROAD LAID OUT FROM THE SOUTHEAST CORNER OF SECTION 22 TO THE SOUTHWEST CORNER OF SECTION 24. THIS ROAD ORDER STATES THAT NO SURVEYOR WAS EMPLOYED FOR LAYING OUT THE ROAD, BECAUSE THE GOVERNMENT SURVEY WAS PLAINLY VISIBLE.

IN FEBRUARY, 1979, M.B. RUDE RAN A SURVEY ALONG THE SOUTH LINES OF SECTIONS 22, 23 AND 24 AND LOCATED THE LINES OF OCCUPATION. THIS CORNER FALLS IN A EAST-WEST ROAD AND FENCE LINE NORTH AND ROAD SOUTH.

IN JULY, 1980, AN EXCAVATION WAS MADE WITH A BACKHOE 15 FEET SQUARE, 3 FEET DEEP. NO EVIDENCE WAS FOUND IN THE EXCAVATION.

THE COUNTY HIGHWAY DEPARTMENT PLANS SHOW THE ROAD WAS REBUILT IN THE SAME LOCATION.

THE CENTER LINE OF THE EAST-WEST ROAD AND FENCE LINE NORTH WAS ACCEPTED AS THE BEST AVAILABLE EVIDENCE OF THE ORIGINAL CORNER LOCATION AS IT FITS THE ROAD ORDER FROM 1904 AND THE ACCEPTED LINES OF OCCUPATION.

IN DECEMBER 2006 E.G. RUD FOUND THIS C.I.M. AND ESTABLISHED KANABEC COUNTY COORDINATES ON THIS POSITION USING G.P.S. EQUIPMENT.