

CERTIFICATE OF LOCATION OF GOVERNMENT CORNER

EAST QUARTER Corner of Section 27, Township 41, Range 24, 4TH P.M.

STATE OF MINNESOTA, County of KANABEC

At the corner location shown on the sketch:

SET ~~CAST IRON MONUMENT~~

7 Rebar with aluminum cap

Kanabec County U.S. Survey Feet Coordinates
NAD 1983, HARN 1996 Adjustment
Obtained by RTK GPS Observation

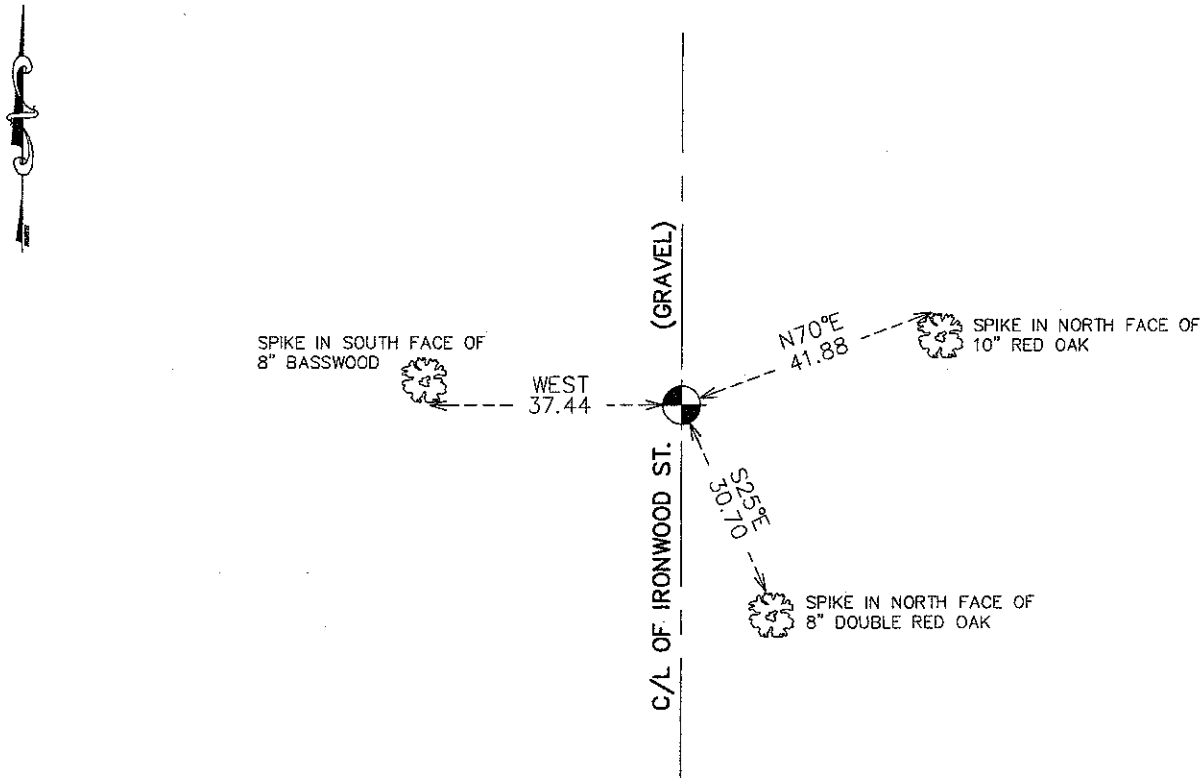
Northing= 199880.29

Easting= 385908.87

Note: NAD 1983, HARN 1996 Adjustment coordinates are NOT compatible with NAD 1983 coordinates

Note: 1 Meter=3937/1200 U.S. Survey Feet

SKETCH OF REFERENCE TIES



Statement of evidence relative to this corner location is on back of page.

I hereby certify that this document and the data contained herein was prepared by me or under my direct supervision.

Ernest [Signature]
Signature

11-27-10
Date

Registration No. *9808*

Land Surveyor, Professional Engineer

County Surveyor, County Engineer

OFFICE OF THE COUNTY RECORDER

County of _____

I hereby certify that this document was filed in the County Recorder's office at _____ M. on the _____ day of _____ A.D., 20____

County Recorder _____

BY _____ Deputy

DOCUMENT NO. _____

E1/4 CORNER, SEC. 27, T41, R24

STATEMENT OF EVIDENCE

12-25-1855 - ORIGINAL GOV'T CORNER WAS SET BY DEPUTY SURVEYOR ISAAC BANKER AND 2 WHITE BIRCH TREES WERE USED FOR BEARING TREES. NO VISIBLE EVIDENCE REMAINS FOR CORNER OF BEARING TREES.

1896 - NELS SJODIN RAN A SURVEY ALONG THE SOUTH AND WEST LINES OF SEC. 26 FOR KANABEC COUNTY TO ESTABLISH A ROAD. HIS NOTES DO NOT INDICATE THAT HE SET ANYTHING AT THIS CORNER.

THERE IS A ROADWAY ALONG THIS LINE THAT RUNS FAIRLY STRAIGHT FOR 3/4 OF MILE AND THEN ANGLES NW'LY TO THE NW CORNER OF SEC. 26. NOBODY IN THE AREA KNOW THE REASON THIS HAPPENED. RESEARCH AT THE KANABEC HISTORY CENTER SHOWED THERE WAS A SCHOOL (BEAN BROOK SCHOOL) BUILT IN 1893 AND USED UNTIL 1952. THE SCHOOL WAS LOCATED IN THE NE CORNER OF THE SE 1/4 OF THE NE 1/4 OF SEC. 27. THIS SCHOOL WOULD HAVE BEEN IN PLACE AT THE TIME OF SJODIN'S SURVEY.

ON JUNE 10, 2009, AN EXCAVATION WAS MADE ON THE CENTERLINE OF IRONWOOD ST. AND EQUIDISTANT FROM THE NE AND SE CORNERS OD SEC. 27. THE EXCAVATION WAS 9' WIDE AND 30' LONG AND 2.5' DEEP. THIS EXTENDED 8" INTO THE ORIGINAL GROUND. NO EVIDENCE WAS FOUND. A LARGE BOULDER WAS FOUND IN THE CENTERLINE AND 4±' NORTH OF AN EQUIDISTANT POINT. THIS FALLS ABOUT 130' EAST OF A STRAIGHT LINE BETWEEN THE NE AND SE CORNERS OF SEC. 27.

DALE ANDERSON SET A MONUMENT ON A STRAIGHT LINE AND EQUIDISTANT BETWEEN THE NE AND SE CORNERS OF SEC. 27 IN APRIL OF 1998 FOR A SURVEY IN THE NE 1/4 OF SEC. 26. NO EVIDENCE OR LINES OF OCCUPATION COULD BE FOUND IN THIS LOCATION.

THEREFORE BEING THERE WAS A SURVEY MADE FOR A ROAD ALONG THIS LINE, THE ROAD HAS BEEN IN PLACE FOR OVER 110 YEARS AND THE ADJOINING LAND OWNERS HAVE USED THIS FOR THE SECTION LINE A KANABEC COUNTY MONUMENT WAS SET ON THE CENTERLINE OF THIS ROAD AT THE INTERSECTION OF A LINE DRAWN FROM THE E1/4 CORNER OF SEC. 26 TO A POINT EQUIDISTANT FROM THE NE AND SE CORNERS OF SEC. 27. TIES WERE TAKEN AND KANABEC COUNTY COORDINATES WERE ESTABLISHED ON THIS POSITION.

9/10/09
W. J. Anderson
9/10/09