

# CERTIFICATE OF LOCATION OF GOVERNMENT CORNER

NORTH QUARTER Corner of Section 35, Township 41, Range 24, 4TH P.M.

STATE OF MINNESOTA, County of KANABEC

A 2 3/4" BY 16" CAST IRON MONUMENT

Kanabec County U.S. Survey Feet Coordinates  
NAD 1983, HARN 1996 Adjustment  
Obtained by RTK GPS Observation

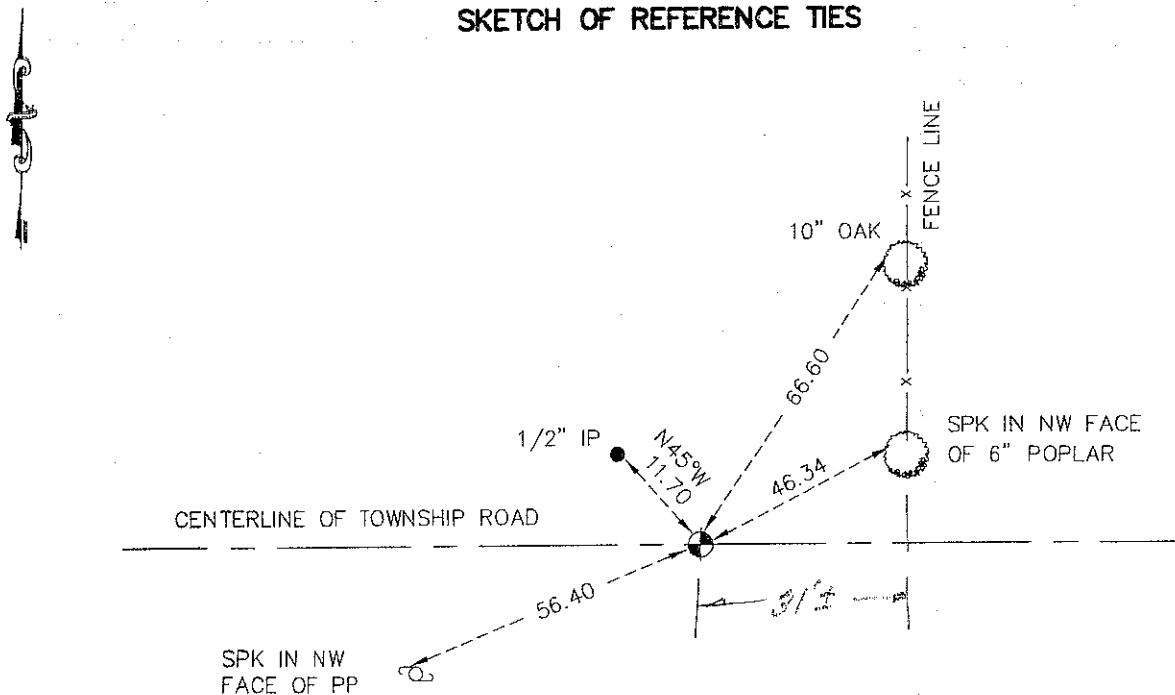
Northing= 197199.38

Easting= 388560.37

Note: NAD 1983, HARN 1996 Adjustment  
coordinates are NOT compatible with  
NAD 1983 coordinates

Note: 1 Meter=3937/1200 U.S. Survey Feet

## SKETCH OF REFERENCE TIES



TIES ARE TO SPIKE IN BLAZE IN NEAR FACE OF TREES UNLESS OTHERWISE NOTED.

Statement of evidence relative to this corner location is on back of page.

I hereby certify that this document and the data contained herein was prepared by me or under my direct supervision.

*Ernest J. Paul*  
Signature

4-21-2009  
Date

Registration No. 9808

Land Surveyor,       Professional Engineer

County Surveyor,       County Engineer

### OFFICE OF THE COUNTY RECORDER

County of \_\_\_\_\_

I hereby certify that this document was filed in the County Recorder's office at \_\_\_\_\_ M. on the

\_\_\_\_\_ day of \_\_\_\_\_ A.D., 20\_\_

County Recorder \_\_\_\_\_

BY \_\_\_\_\_ Deputy

**DOCUMENT NO.** \_\_\_\_\_

NE CORNER SECTION 23, TOWNSHIP 41, RANGE 24

**STATEMENT OF EVIDENCE**

ALL OF THE ORIGINAL BEARING TREES ARE NOW GONE.

IN 1903, MR. JOHN NELSON, THE COUNTY SURVEYOR, MADE A ROAD SURVEY ALONG THE NORTH LINE OF SECTION 35, BUT HIS RECORDS DO NOT SHOW IF HE FOUND OR SET ANYTHING AT THE NORTH QUARTER CORNER.

IN 1904, MR. JOHN NELSON, THE COUNTY SURVEYOR, MADE A SURVEY IN SECTION 35 AND SET THE CENTER OF SECTION AND SOUTH QUARTER CORNER, BUT DOES NOT SHOW THAT ANYTHING WAS SET AT THE NORTH QUARTER CORNER.

ON JUNE 20, 1978, WE MADE AN EXCAVATION WITH THE BACKHOE AT THE CENTERLINE OF A EAST-WEST ROAD AND A FENCE LINE NORTH. WE ALSO MADE AN EXCAVATION IN THE CENTER OF AN EAST-WEST ROAD AND THE LINE FROM THE SOUTH QUARTER CORNER THROUGH THE STONE WITH AN "X" FOUND AT THE CENTER OF SECTION EXTENDED. NO EVIDENCE WAS FOUND IN EITHER EXCAVATION.

WE ACCEPTED THE LINE FROM THE SOUTH QUARTER CORNER THROUGH THE STONE WITH AN "X" AT THE CENTER OF SECTION PER MR. JOHN NELSON'S SURVEY, EXTENDED NORTH TO THE CENTER OF THE ROAD, AS THE BEST AVAILABLE EVIDENCE OF THE ORIGINAL CORNER LOCATION AND MONUMENTED THIS LOCATION.

THIS LOCATION FALLS 35 FEET WEST OF A FENCE LINE NORTH. HOWEVER, USING THIS MONUMENTED LOCATION THE FENCE LINE AT THE 1/16 CORNERS 1/4 MILE EAST AND WEST FIT WITHIN A COUPLE OF FEET.

THIS LOCATION FITS WITHIN 5 FEET OF THE HALF WAY POINT FROM MR. JOHN NELSON'S ROAD SURVEY FROM 1903.

*In April 2009 E.G. Rud & Sons found the C.I.M., took new ties & established Kanabec County coordinates on this position*