

REVISED

Index No. 4124066

CERTIFICATE OF LOCATION OF GOVERNMENT CORNER

NORTHEAST Corner of Section 34, Township 41, Range 24, 4TH P.M.

STATE OF MINNESOTA, County of KANABEC

At the corner location shown on the sketch:

#7 REBAR WITH ALUMINUM CAP

Kanabec County U.S. Survey Feet Coordinates
NAD 1983, HARN 1996 Adjustment
Obtained by RTK GPS Observation

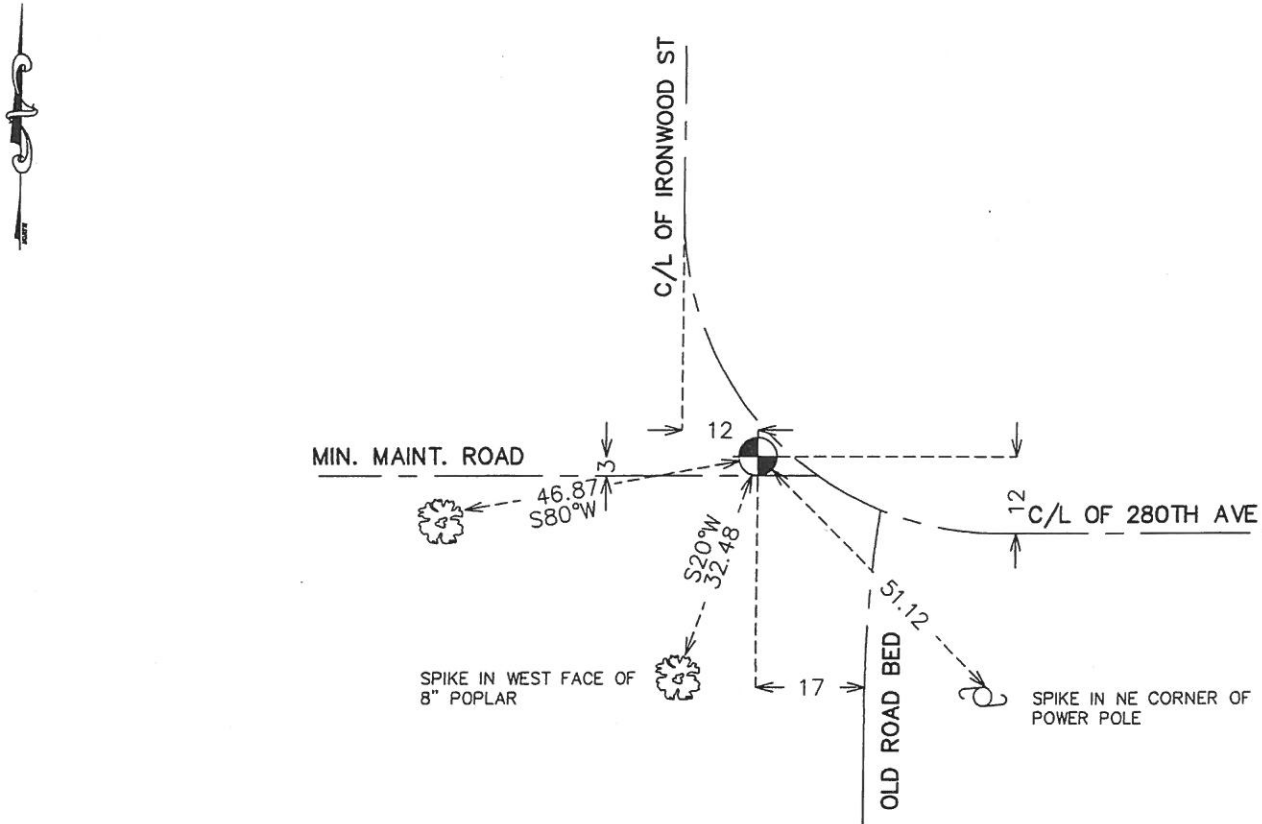
Northing= 197300.⁹⁴~~85~~

Easting= ~~385773.84~~ 385892.45

Note: NAD 1983, HARN 1996 Adjustment
coordinates are NOT compatible with
NAD 1983 coordinates

Note: 1 Meter=3937/1200 U.S. Survey Feet

SKETCH OF REFERENCE TIES



Statement of evidence relative to this corner location is on back of page.

I hereby certify that this document and the data contained herein was prepared by me or under my direct supervision.

Ernest [Signature] Revised 1-22-18
Signature Date 11-27-10

Registration No. 9808

- Land Surveyor, Professional Engineer
- County Surveyor, County Engineer

OFFICE OF THE COUNTY RECORDER

County of _____

I hereby certify that this document was filed in the County Recorder's office at _____ M. on the _____ day of _____ A.D., 20____

County Recorder _____

BY _____ Deputy

DOCUMENT NO. _____

NE CORNER, SEC. 34, T41, R24

STATEMENT OF EVIDENCE

- 12-25-1855 ORIGINAL CORNER SET BY DEPUTY SURVEYOR, ISAAC BANKER, AND 2 BURR OAKS AND 2 ASPENS WERE USED AS BEARING TREES. NO VISIBLE EVIDENCE FOR THE CORNER OR BEARING TREES REMAIN.
- 1-28-1896 NELS SJODIN RAN A ROAD SURVEY FROM SE CORNER TO NE CORNER OF SEC. 35. HE THEN CONTINUED NORTH BETWEEN SECS. 26 AND 27. FROM HIS NOTES IT APPEARS THAT THE ROAD ALONG THE NORTH SIDE OF SEC. 35 IS 200' ± NORTH OF SJODIN'S LINE
- 11-2-1903 JOHN NELSON RAN A SURVEY ALONG THE NORTH AND EAST LINES OF SEC. 35. HE STARTED AT THE NW CORNER OF SEC. 35 AND RAN TO THE NE CORNER, BUT DOESN'T NOTE WHAT WAS AT THE CORNERS.
- 4-2-1904 JOHN NELSON DID A SURVEY IN SEC. 35 AND SET STONES AT THE W1/4 CORNER, CENTER, S1/4 CORNER AND SW CORNER. JOHN DID NOT SET THE NW CORNER OF SEC. 35, BUT HIS MEASUREMENTS OF SEC. 35 FIT THE ROAD ALONG THE NORTH LINE OF SEC. 35.
- 9-13-1978 M.B. RUDE DID A SURVEY IN SEC. 35 AND FOUND THE 4 STONES SET BY JOHN NELSON. M.B. RUDE SET THE N1/4 CORNER BASED ON NELSON'S SURVEY AND SET A 1/2" IRON PIPE AT THE NW CORNER BY DOUBLING OVER THE DISTANCE ON THE NORTH LINE OF THE NE1/4 AND THE WEST LINE OF THE SW1/4.
- 4-17-1993 DALE ANDERSON RAN A SURVEY AROUND SEC. 26 AND FOUND THE 1/2" IRON PIPE AND SET A #7 REBAR WITH AN ALUMINUM CAP. THIS CORNER FALLS 12' NORTH OF A ROAD RUNNING EAST, 3' NORTH OF AN OLD ROADBED RUNNING WEST, 12' EAST OF A ROAD RUNNING NORTH AND 17' WEST OF AN OLD ROADBED RUNNING SOUTH. M.B. RUDE EXCAVATED AT THIS LOCATION AND NO EVIDENCE COULD BE FOUND.
- MAY 2009 E.G. RUD AND SONS, INC. RAN A SURVEY TO ESTABLISH THE SW CORNER OF SEC. 26. ON 5-13-2009 AND AGAIN ON 4-12-2010 ERNIE RUD HAD A CONVERSATION WITH RAY BRASCH, OWNER OF THE NW1/4 OF SEC. 35 AND OTHER LAND. RAY IS ON THE HILLMAN TOWN BOARD AND WAS WELL AWARE OF THE OFFSETS IN THE ROAD GOING NORTH AND THE ROADBED GOING SOUTH. HE HAD NO IDEA WHICH WAS THE CORRECT LOCATION. HIS DAD BOUGHT THIS FARM IN 1945 AND SHOWN M.B. RUDE THE STONES M.B. LOCATED IN 1978 ON THE SAME DAY HE LATER DIED ON. RAY'S DAD NEVER MENTIONED A LOCATION FOR THE NW CORNER OF SEC. 35. ERNIE RUD ALSO SPOKE WITH DAVE POFTRATZ, OWNER OF LAND IN THE S1/2 OF SEC. 26 AND SEC. 35. HIS DAD WALKED TO SCHOOL IN THE EARLY 1900'S ALONG ROADBED ON THE WEST LINE OF SECS. 26 AND 35 TO A SCHOOLHOUSE IN THE NE1/4 OF SEC. 27. BASED ON TESTIMONY OF THE ADJOINING LAND OWNERS, THE CORNER LOCATION BY, JOHN NELSON, M.B. RUDE AND DALE ANDERSON WAS ACCEPTED AS THE BEST EVIDENCE FOR THIS CORNER. TIES WERE TAKEN AND KANABEC COUNTY COORDINATES WERE ESTABLISHED ON THIS POSITION.