

CERTIFICATE OF LOCATION OF GOVERNMENT CORNER

EAST QUARTER Corner of Section 2, Township 41, Range 24, 4TH P.M.
 STATE OF MINNESOTA, County of KANABEC

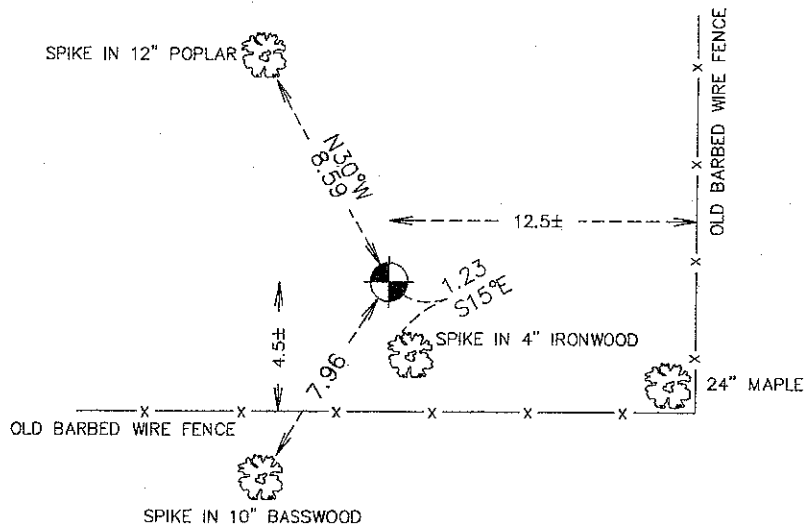
At the corner location shown on the sketch:
 SET A 1/2" BY 42" IRON PIPE WITH ALUMINUM CAP, UP 1.5± FT.

Kanabec County U.S. Survey Feet Coordinates
 NAD 1983, HARN 1996 Adjustment
 Obtained by RTK GPS Observation

Northing= 221020.67
 Easting= 391553.86

Note: NAD 1983, HARN 1996 Adjustment
 coordinates are NOT compatible with
 NAD 1983 coordinates
 Note: 1 Meter=3937/1200 U.S. Survey Feet

SKETCH OF REFERENCE TIES



ALL WOODED

Statement of evidence relative to this corner location is on back of page.

I hereby certify that this document and the data contained herein was prepared by me or under my direct supervision.

Ernest J. Blud
 Signature

12-21-2011
 Date

Registration No. 9808

- Land Surveyor, Professional Engineer
 County Surveyor, County Engineer

OFFICE OF THE COUNTY RECORDER

County of _____
 I hereby certify that this document was filed in the County Recorder's office at _____ M. on the _____ day of _____ A.D., 20____

County Recorder _____
 BY _____ Deputy

DOCUMENT NO. _____

E1/4 CORNER, SEC. 11, T41, R24

STATEMENT OF EVIDENCE

THE ORIGINAL CORNER WAS SET ON DECEMBER 24, 1855 BY U.S. DEPUTY SURVEYOR ISAAC BANKER AND 2 BEARING TREES NOTED AS:

6" BIRCH @ 8 LINKS BEARING N55°W

5" ASPEN @ 14 LINKS BEARING S50°E

NO VISIBLE EVIDENCE COULD BE FOUND FOR THE ORIGINAL CORNER OR BEARING TREES.

NO RECORDS OF ANY SUBSEQUENT SURVEYS COULD BE FOUND AT THE KANABEC COUNTY OFFICES.

IN DECEMBER 2011, E.G. RUD AND SONS RAN A SURVEY AROUND SECS. 1, 2, 11 AND 12. THIS CORNER FALLS IN A WOODED AREA. REMNANTS OF A BARBED WIRE FENCE WERE FOUND WITH A 24" MAPLE BEING USED AS A CORNER POST.

A 1/2" BY 42" IRON PIPE WITH AN ALUMINUM CAP WAS SET BY SINGLE PROPORTION BETWEEN THE NE AND SE CORNERS OF SEC. 2. THIS POSITION FELL 4 FEET NORTH AND 12 FEET WEST OF THE 24" MAPLE TREE, TIES WERE TAKEN AND KANABEC COUNTY COORDINATES WERE ESTABLISHED ON THIS POSITION.