

# CERTIFICATE OF LOCATION OF GOVERNMENT CORNER

NORTH QUARTER Corner of Section 12, Township 41, Range 24, 4TH P.M.

STATE OF MINNESOTA, County of KANABEC

At the corner location shown on the sketch:

SET A 1/2" BY <sup>42"</sup> IRON PIPE WITH ALUMINUM CAP, UP 1.5± FT.

Kanabec County U.S. Survey Feet Coordinates  
NAD 1983, HARN 1996 Adjustment  
Obtained by RTK GPS Observation

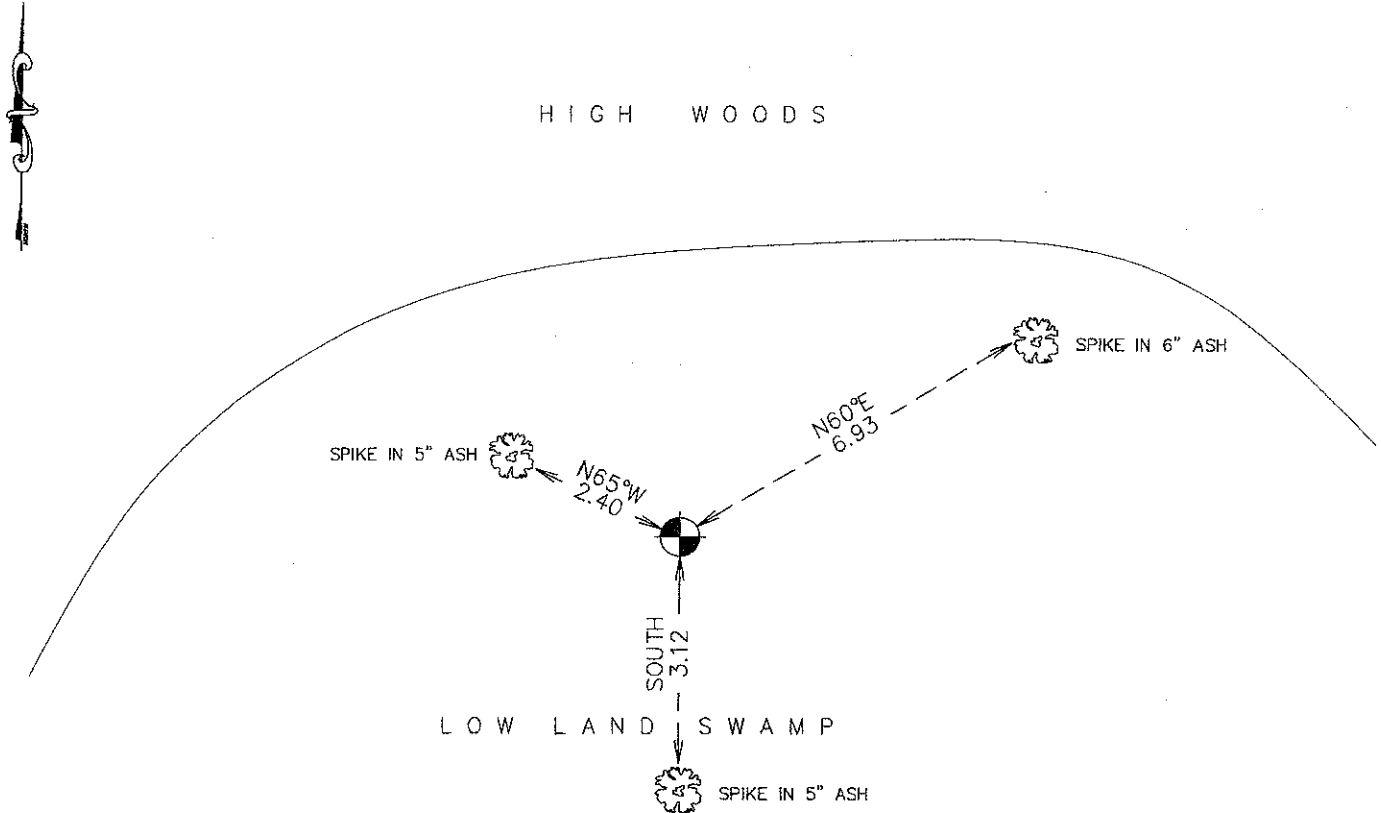
Northing= 218405.29

Easting= 394154.83

Note: NAD 1983, HARN 1996 Adjustment coordinates are NOT compatible with NAD 1983 coordinates

Note: 1 Meter=3937/1200 U.S. Survey Feet

## SKETCH OF REFERENCE TIES



Statement of evidence relative to this corner location is on back of page.

I hereby certify that this document and the data contained herein was prepared by me or under my direct supervision.

*Ernest Lund*  
Signature

12-21-2011  
Date

Registration No. 9808

- Land Surveyor,       Professional Engineer  
 County Surveyor,     County Engineer

### OFFICE OF THE COUNTY RECORDER

County of \_\_\_\_\_

I hereby certify that this document was filed in the County Recorder's office at \_\_\_\_\_ M. on the

\_\_\_\_\_ day of \_\_\_\_\_ A.D., 20\_\_

County Recorder \_\_\_\_\_

BY \_\_\_\_\_ Deputy

**DOCUMENT NO.** \_\_\_\_\_

N1/4 CORNER, SEC. 12, T41, R24

**STATEMENT OF EVIDENCE**

**THE ORIGINAL CORNER WAS ON DECEMBER 24, 1855 BY U.S. DEPUTY SURVEYOR ISAAC BANKER AND 2 BEARING TREES NOTED AS:**

**9" TAMARACK @ 17 LINKS BEARING S11°W**

**8" TAMARACK @ 6 LINKS BEARING N10°W**

**NO VISIBLE EVIDENCE COULD BE FOUND FOR THE ORIGINAL CORNER OR BEARING TREES.**

**NO RECORDS OF ANY SUBSEQUENT SURVEYS COULD BE FOUND AT THE KANABEC COUNTY OFFICES.**

**IN DECEMBER 2011, E.G. RUD AND SONS RAN A SURVEY AROUND SECS. 1, 2, 11 AND 12. THIS CORNER FALLS IN A WOODED AREA ON THE SOUTH SIDE OF TAX FORFEITED LAND IN SEC. 1 USED FOR VASALOPPET TRAILS.**

**WE SET A 1/2" BY 42" IRON PIPE WITH AN ALUMINUM CAP ON LINE AND EQUIDISTANT BETWEEN THE NE AND NW CORNERS OF SEC. 12. TIES WERE TAKEN AND KANABEC COUNTY COORDINATES WERE ESTABLISHED ON THIS POSITION.**