

# CERTIFICATE OF LOCATION OF GOVERNMENT CORNER

EAST QUARTER Corner of Section 11, Township 41, Range 24, 4TH P.M.

STATE OF MINNESOTA, County of KANABEC

At the corner location shown on the sketch:

FOUND CAST IRON MONUMENT

Kanabec County U.S. Survey Feet Coordinates  
NAD 1983, HARN 1996 Adjustment  
Obtained by RTK GPS Observation

Northing= 215714.17

Easting= 391410.58

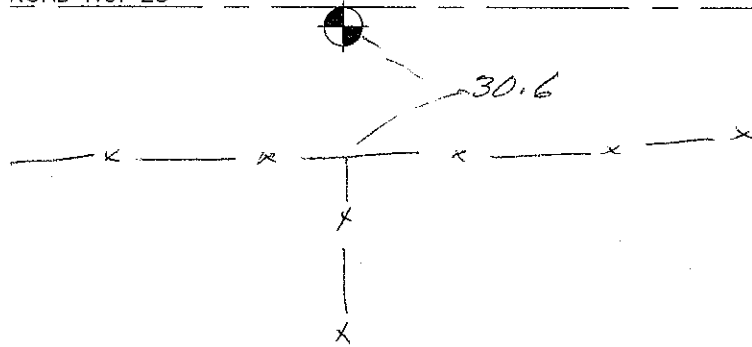
Note: NAD 1983, HARN 1996 Adjustment  
coordinates are NOT compatible with  
NAD 1983 coordinates

Note: 1 Meter=3937/1200 U.S. Survey Feet

## SKETCH OF REFERENCE TIES



CL. OF COUNTY ROAD NO. 25



Statement of evidence relative to this corner location is on back of page.

I hereby certify that this document and the data contained herein was prepared by me or under my direct supervision.

*Ernest Hub*  
Signature

12-21-2011  
Date

Registration No. 9808

- Land Surveyor,       Professional Engineer
- County Surveyor,     County Engineer

## OFFICE OF THE COUNTY RECORDER

County of \_\_\_\_\_

I hereby certify that this document was filed in the County Recorder's office at \_\_\_\_\_ M. on the

\_\_\_\_\_ day of \_\_\_\_\_ A.D., 20\_\_\_\_

County Recorder \_\_\_\_\_

BY \_\_\_\_\_ Deputy

DOCUMENT NO. \_\_\_\_\_

E1/4 CORNER, SEC. 11, T41, R24

**STATEMENT OF EVIDENCE (FROM TIE SHEET 642 BY M.B. RUDE)**

**ALL OF THE ORIGINAL BEARING TREES ARE NOW GONE.**

**IN 1894, A ROAD ORDER WAS FILED FOR A 4 ROD TOWNSHIP ROAD AND SURVEYED BY NELS SJODIN, JR., SURVEYOR, FROM A POINT 64 RODS WEST OF THE W1/4 CORNER OF SEC. 10 ALONG THE EAST-WEST QUARTER LINES TO THE E1/4 CORNER OF SEC. 12.**

**IN FEBRUARY 1979, M.B. RUDE RAN A SURVEY AROUND SECS. 10, 11, 12, 13, 14, 15, 22, 23 AND 24 AND LOCATED THE LINES OF OCCUPATION.**

**THIS CORNER FALLS ON AN EAST-WEST ROAD AND A FENCE LINE SOUTH.**

**IN JULY 1980, M.B. RUDE MADE AN EXCAVATION WITH THE BACKHOE AT THIS LOCATION AND FOUND A GRANITE ROCK WITH A "X" CUT INTO THE TOP, 1.5 FEET BELOW THE SURFACE.**

**THIS GRANITE ROCK WAS ACCEPTED AS THE ORIGINAL CORNER LOCATION.**

**IN DECEMBER 2011, E.G. RUD AND SONS ESTABLISHED KANABEC COUNTY COORDINATES WERE ESTABLISHED ON THIS POSITION.**