

# CERTIFICATE OF LOCATION OF GOVERNMENT CORNER

NORTHEAST Corner of Section 14, Township 41, Range 24, 4TH P.M.

STATE OF MINNESOTA, County of KANABEC

At the corner location shown on the sketch:  
SET A #7 REBAR WITH ALUMINUM CAP ON  
NORTH-SOUTH FENCE LINE.

Kanabec County U.S. Survey Feet Coordinates  
NAD 1983, HARN 1996 Adjustment  
Obtained by RTK GPS Observation

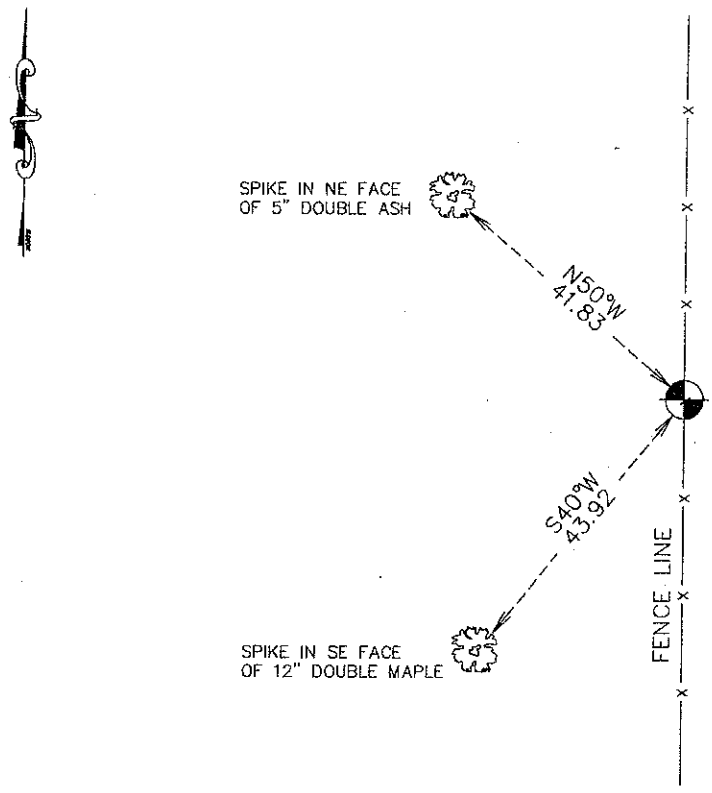
Northing= 212976.19

Easting= 391410.37

Note: NAD 1983, HARN 1996 Adjustment  
coordinates are NOT compatible with  
NAD 1983 coordinates

Note: 1 Meter=3937/1200 U.S. Survey Feet

## SKETCH OF REFERENCE TIES



Statement of evidence relative to this corner location is on back of page.

I hereby certify that this document and the data contained herein was prepared by me or under my direct supervision.

*Ernest J. Rud*  
Signature

12-21-2011  
Date

Registration No. 9808

Land Surveyor,  Professional Engineer

County Surveyor,  County Engineer

## OFFICE OF THE COUNTY RECORDER

County of \_\_\_\_\_

I hereby certify that this document was filed in the County Recorder's office at \_\_\_\_\_ M. on the

\_\_\_\_\_ day of \_\_\_\_\_ A.D., 20\_\_\_\_

County Recorder \_\_\_\_\_

BY \_\_\_\_\_ Deputy

DOCUMENT NO. \_\_\_\_\_

NE CORNER, SEC. 14, T41, R24

STATEMENT OF EVIDENCE <sup>set</sup>

THE ORIGINAL CORNER WAS ON DECEMBER 24, 1855 BY DEPUTY SURVEYOR ISAAC BANKER AND 4 BEARING TREES NOTED AS:

- 6" BALSAM @ 31 LINKS BEARING N17°W
- 7" WHITE PINE @ 17 LINKS BEARING N48°E
- 10" WHITE BIRCH @ 23 LINKS BEARING S19°E
- 5" LINDEN @ 16 LINKS BEARING S46°W

NO VISIBLE EVIDENCE COULD BE FOUND FOR THE ORIGINAL CORNER OR BEARING TREES.

NO RECORDS OF ANY SUBSEQUENT SURVEYS COULD BE FOUND AT THE KANABEC COUNTY OFFICES.

IN DECEMBER 2011 E.G. RUD AND SONS SURVEYED AROUND SECS. 1, 2, 11, AND 12. THIS CORNER FALLS ON AN OLD NORTH-SOUTH FENCE WITH PASTURE TO THE WEST AND WOODS TO THE EAST. ALDEN SMITH, LONGTIME RESIDENT, SAID THAT HIS FATHER ESTABLISHED THIS FENCE WHEN HE WAS A YOUNG BOY.

THEREFORE, WE HELD TO THIS FENCE LINE AS IT RAN TO THE E1/4 CORNER OF SEC. 11 AND THEN SET A MONUMENT AT A PRORATED DISTANCE BETWEEN THE E1/4 CORNER OF SEC. 11 AND THE SE CORNER OF SEC. 14. TIES WERE TAKEN AND KANABEC COUNTY COORDINATES WERE ESTABLISHED ON THIS POSITION.