

CERTIFICATE OF LOCATION OF GOVERNMENT CORNER

N 1/4 Corner of Section 24, Township 41, Range 24, 4TH P.M.

STATE OF MINNESOTA, County of KANABEC

4" X 17" CAST ALUMINUM MONUMENT

Kanabec County U.S. Survey Feet Coordinates
 NAD 1983, HARN 1996 Adjustment
 Obtained by RTK GPS Observation

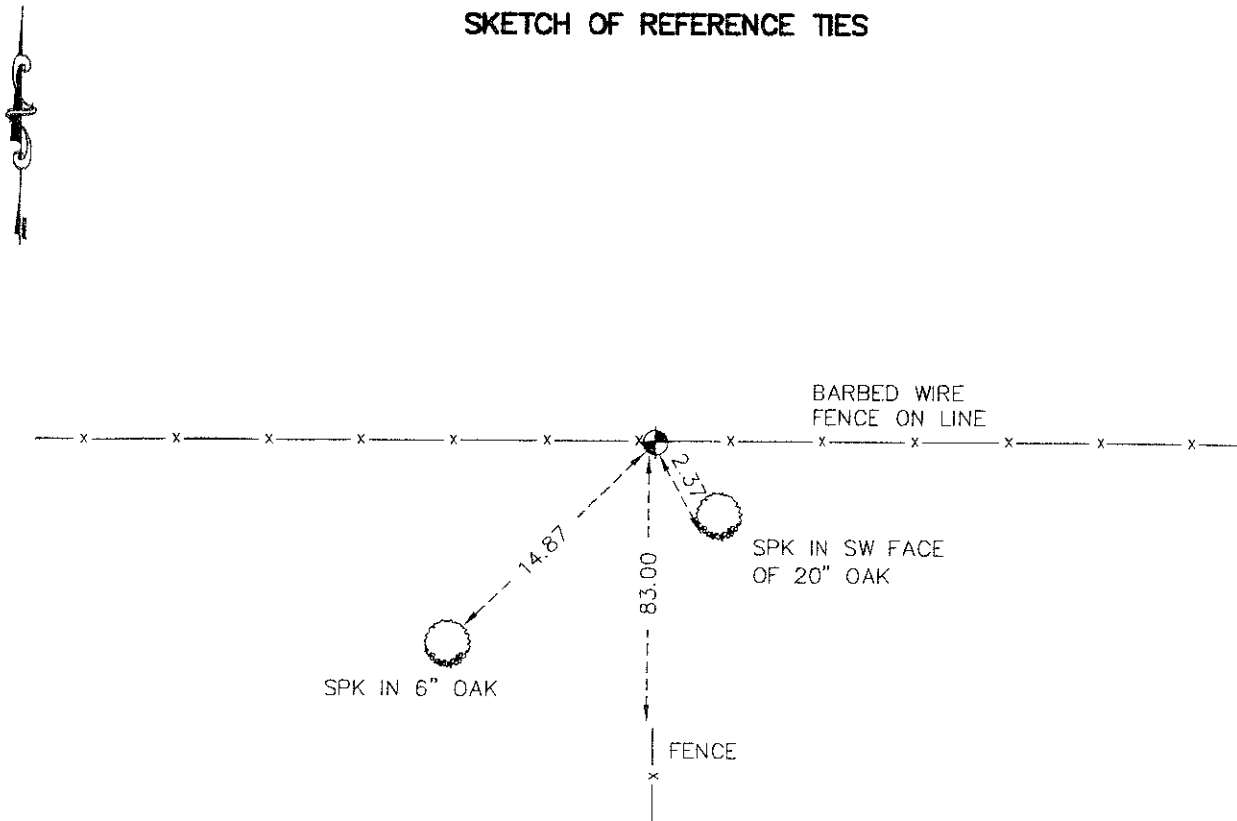
Northing= 207661.80

Easting= 393637.11

Note: NAD 1983, HARN 1996 Adjustment
 coordinates are NOT compatible with
 NAD 1983 coordinates

Note: 1 Meter=3937/1200 U.S. Survey Feet

SKETCH OF REFERENCE TIES



Statement of evidence relative to this corner location is on back of page.

I hereby certify that this document and the data contained herein was prepared by me or under my direct supervision.

Ernest G. Rud
 Signature

6-02-2009
 Date

Registration No. 9808

Land Surveyor, Professional Engineer

County Surveyor, County Engineer

OFFICE OF THE COUNTY RECORDER

County of _____

I hereby certify that this document was filed in the County Recorder's office at _____ M. on the _____ day of _____ A.D., 20____

County Recorder _____

BY _____ Deputy

DOCUMENT NO. _____

N. ~~E.~~ 1/4 CORNER SECTION 24, TOWNSHIP 41, RANGE 24

STATEMENT OF EVIDENCE

ALL OF THE ORIGINAL BEARING TREES ARE NOW GONE.

THERE IS A TOWNSHIP ROAD ORDER ON FILE IN 1913 FOR A 2 ROD CARTWAY LAID OUT FROM THE SOUTH QUARTER OF SECTION 24 RUNNING NORTH ON THE QUARTER LINE FOR A QUARTER OF A MILE.

IN FEBRUARY OF 1979, M.B. RUDE RAN A SURVEY AROUND SECTIONS 10 THROUGH 15 AND 22 THROUGH 24 IN TOWNSHIP 41, RANGE 24 AND SECTIONS 7, 18, AND 19, TOWNSHIP 41, RANGE 23 TO LOCATE EXISTING LINES OF OCCUPATION AND MONUMENTATION.

THIS CORNER FALLS IN A WOODED AREA AT A FENCE LINE SOUTH.

M.B. RUDE TALKED WITH WALTER CUTLER FROM THE STATE OF WASHINGTON AND HE STATES THAT HE HELPED REBUILD THIS FENCE LINE WITH HIS FATHER IN 1926, BUT DOES NOT REMEMBER ANY CORNER MARKER.

IN OCTOBER OF 1981, M.B. RUDE SET THIS CORNER ON LINE BETWEEN THE NORTHEAST AND NORTHWEST CORNER OF SECTION 24 AND AT THE NORTHERLY EXTENSION OF A FENCE LINE SOUTH. THIS FENCE LINE WAS IN PLACE IN 1926 AND LINES UP WITH THE TOWNSHIP ROAD PER THE ROAD ORDER FROM 1913. THERE IS AN EAST-WEST FENCE ABOUT 83 FEET SOUTH OF THIS CORNER. HOWEVER, MR. BACHMAN, THE LAND OWNER WHO BUILT THE FENCE, STATED HE DID NOT KNOW WHERE THE LINE WAS WHEN THE FENCE WAS BUILT.

IN MARCH 2009 E.G. RUD AND SONS RELOCATED THIS CORNER SET BY M.B. RUDE AND ESTABLISHED KANABEC COUNTY COORDINATES USING G.P.S. EQUIPMENT.