

# CERTIFICATE OF LOCATION OF GOVERNMENT CORNER

NORTHEAST Corner of Section 23, Township 41, Range 24, 4TH P.M.

STATE OF MINNESOTA, County of KANABEC

4" BY 17" CAST ALUMINUM MONUMENT AND A STEEL FENCE POST BY THE MONUMENT

Kanabec County U.S. Survey Feet Coordinates  
NAD 1983, HARN 1996 Adjustment  
Obtained by RTK GPS Observation

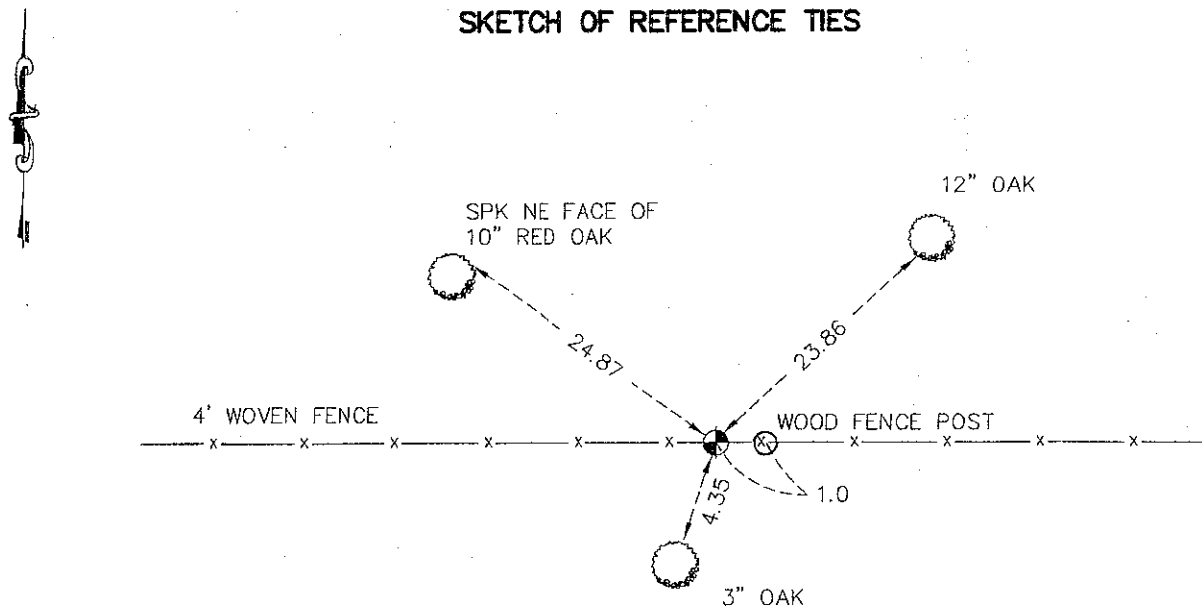
Northing= 207500.34

Easting= 390940.56

Note: NAD 1983, HARN 1996 Adjustment coordinates are NOT compatible with NAD 1983 coordinates

Note: 1 Meter=3937/1200 U.S. Survey Feet

### SKETCH OF REFERENCE TIES



TIES ARE TO SPIKE IN BLAZE IN NEAR FACE OF TREES UNLESS OTHERWISE NOTED.

Statement of evidence relative to this corner location is on back of page.

I hereby certify that this document and the data contained herein was prepared by me or under my direct supervision.

*Ernest D. Dred*  
Signature

3-17-2009  
Date

Registration No. 9808

- Land Surveyor,     Professional Engineer  
 County Surveyor,     County Engineer

### OFFICE OF THE COUNTY RECORDER

County of \_\_\_\_\_  
I hereby certify that this document was filed in the County Recorder's office at \_\_\_\_\_ M. on the \_\_\_\_\_ day of \_\_\_\_\_ A.D., 20\_\_\_\_

County Recorder \_\_\_\_\_  
BY \_\_\_\_\_ Deputy

DOCUMENT NO. \_\_\_\_\_

NE CORNER SECTION 23, TOWNSHIP 41, RANGE 24

**STATEMENT OF EVIDENCE**

ALL OF THE ORIGINAL BEARING TREES ARE NOW GONE.

THERE IS NOT ANY RESURVEY INFORMATION FOR THIS CORNER ON FILE.

THE AREA RESIDENTS HAVE NO KNOWLEDGE OF THE CORNER MARKER.

IN FEBRUARY, 1979, M.B. RUDE RAN A SURVEY AROUND SECTIONS 10 THROUGH 15, 22 THROUGH 24, TOWNSHIP 41, RANGE 24, AND SECTIONS 7, 18, AND 19, TOWNSHIP 41, RANGE 23, AND LOCATED THE EXISTING LINES OF OCCUPATION AND MONUMENTATION.

THERE ARE NO LINES OF OCCUPATION NEAR THIS CORNER.

IN MARCH, 1981, M.B. RUDE SET THIS CORNER BY THE NORTHERLY EXTENSION OF AN OLD ROADBED SOUTH WHICH RUNS NORTH FROM THE SOUTHEAST CORNER OF SECTION 23 ABOUT 5/8 OF A MILE AND AT A PROPORTIONAL DISTANCE FROM THE EAST QUARTER CORNER OF SECTION 23 TO THE EAST QUARTER CORNER OF SECTION 11.

IN 1916, THE TOWNSHIP FILED A FINAL ROAD ORDER FOR A 4 ROD ROAD STARTING AT THE SOUTHEAST CORNER OF SECTION 23 AND RUNNING NORTH ON THE SECTION LINE BETWEEN THE SECTIONS 23 AND 24, ONE MILE MORE OR LESS TO THE NORTHEAST CORNER OF SECTION 23.

IN MARCH 2009, E.G. RUD AND SONS RELOCATED THE MONUMENT SET BY M.B. RUDE AND ESTABLISHED KANABEC COUNTY COORDINATES USING G.P.S. EQUIPMENT.