

CERTIFICATE OF LOCATION OF GOVERNMENT CORNER

EAST 1/4 Corner of Section 23, Township 41, Range 24, 4TH P.M.

STATE OF MINNESOTA, County of KANABEC

4" X 17" CAST ALUMINUM MONUMENT

Kanabec County U.S. Survey Feet Coordinates
 NAD 1983, HARN 1996 Adjustment
 Obtained by RTK GPS Observation

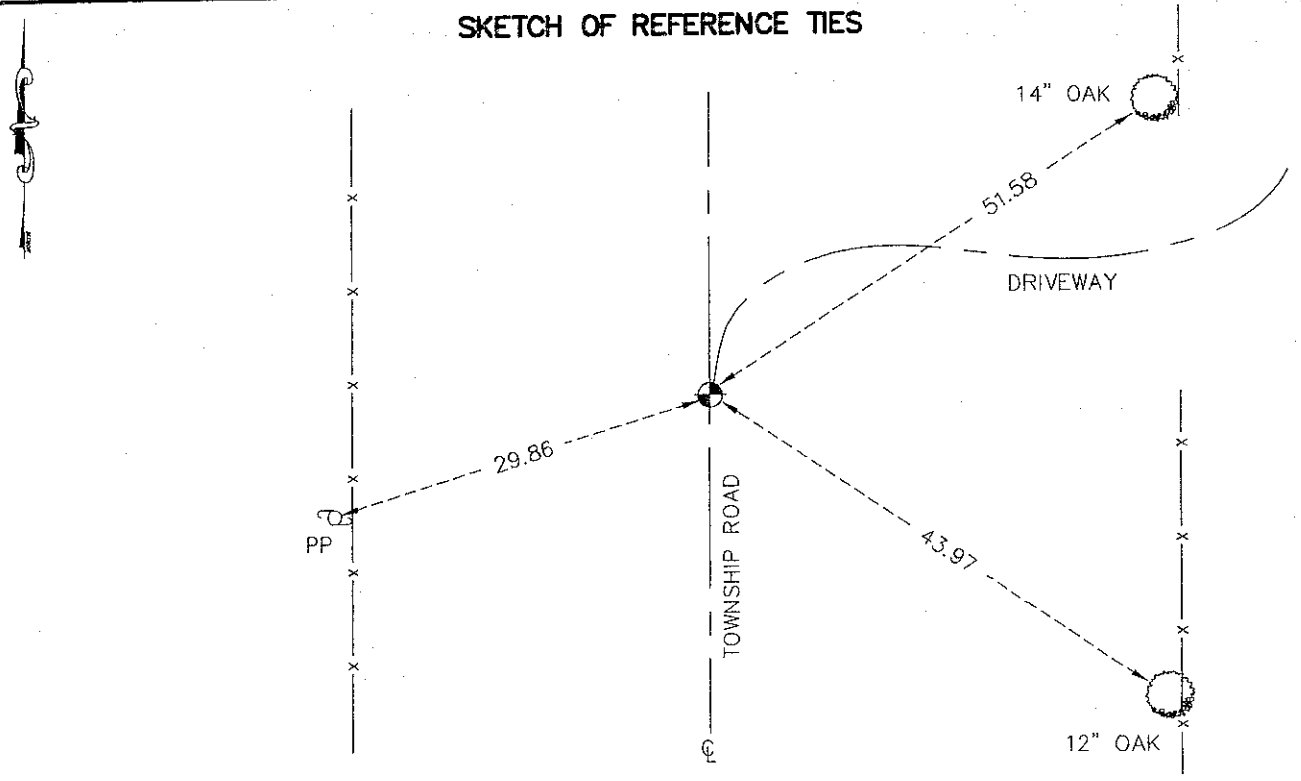
Northing= 204758.54

Easting= 390962.51

Note: NAD 1983, HARN 1996 Adjustment
 coordinates are NOT compatible with
 NAD 1983 coordinates

Note: 1 Meter=3937/1200 U.S. Survey Feet

SKETCH OF REFERENCE TIES



TIES ARE TO SPK IN BLAZE IN NEAR FACE

Statement of evidence relative to this corner location is on back of page.

I hereby certify that this document and the data contained herein was prepared by me or under my direct supervision.

Ernest J. Bud
 Signature

3-17-2009
 Date

Registration No. 9808

- Land Surveyor, Professional Engineer
 County Surveyor, County Engineer

OFFICE OF THE COUNTY RECORDER

County of _____

I hereby certify that this document was filed in the County Recorder's office at _____ M. on the _____ day of _____ A.D., 20____

County Recorder _____

BY _____ Deputy

DOCUMENT NO. _____

SE CORNER SECTION 24, TOWNSHIP 41, RANGE 24

STATEMENT OF EVIDENCE

ALL OF THE ORIGINAL BEARING TREES ARE NOW GONE.

THERE IS NOT ANY INFORMATION OF A RESURVEY ON FILE FOR THIS CORNER.

IN FEBRUARY 1979, M.B. RUDE RAN A SURVEY AROUND SECTIONS 10 THROUGH 15, AND 22 THROUGH 24, TOWNSHIP 41, RANGE 24, AND SECTIONS 7, 19 AND 18, TOWNSHIP 41, RANGE 23, AND LOCATED THE EXISTING LINES OF OCCUPATION AND MONUMENTATION.

IN 1916, THE TOWNSHIP FILED A FINAL ROAD ORDER FOR A 4 ROD ROAD STARTING AT THE SOUTHEAST CORNER OF SECTION 23 AND RUNNING NORTH ON THE SECTION LINE BETWEEN 23 AND 24, 1 MILE MORE OR LESS, TO THE NORTHEAST CORNER OF SECTION 23.

IN JULY 1980, M.B. RUDE MADE AN EXCAVATION WITH A BACKHOE 10 FEET BY 10 FEET AT THE CENTER LINE OF THE NORTH-SOUTH ROAD AND OLD FENCE LINE EAST EXTENDED WEST. THE EXCAVATION WAS 2.5 FEET DEEP ABOUT 1 FOOT INTO THE NATURAL GROUND. NO EVIDENCE WAS FOUND IN THE EXCAVATION.

IN MARCH 1981, M.B. RUDE SET THIS CORNER AT THE CENTER LINE OF NORTH-SOUTH ROAD AND FENCE LINE EAST EXTENDED WEST.

THIS LOCATION IS IN HARMONY WITH THE TOWNSHIP ROAD ORDER FROM 1916, THE ACCEPTED LINES OF OCCUPATION AND THE GOVERNMENT SURVEY.

IN MARCH 2009, E.G. RUD AND SONS FOUND THIS MONUMENT AND ESTABLISHED KANABEC COUNTY COORDINATES USING SURVEY QUALITY G.P.S. EQUIPMENT.