

CERTIFICATE OF LOCATION OF GOVERNMENT CORNER

NORTH 1/4 Corner of Section 25, Township 41, Range 24, 4TH P.M.

STATE OF MINNESOTA, County of KANABEC

2 3/4" X 10" CAST IRON MONUMENT

Kanabec County U.S. Survey Feet Coordinates
 NAD 1983, HARN 1996 Adjustment
 Obtained by RTK GPS Observation

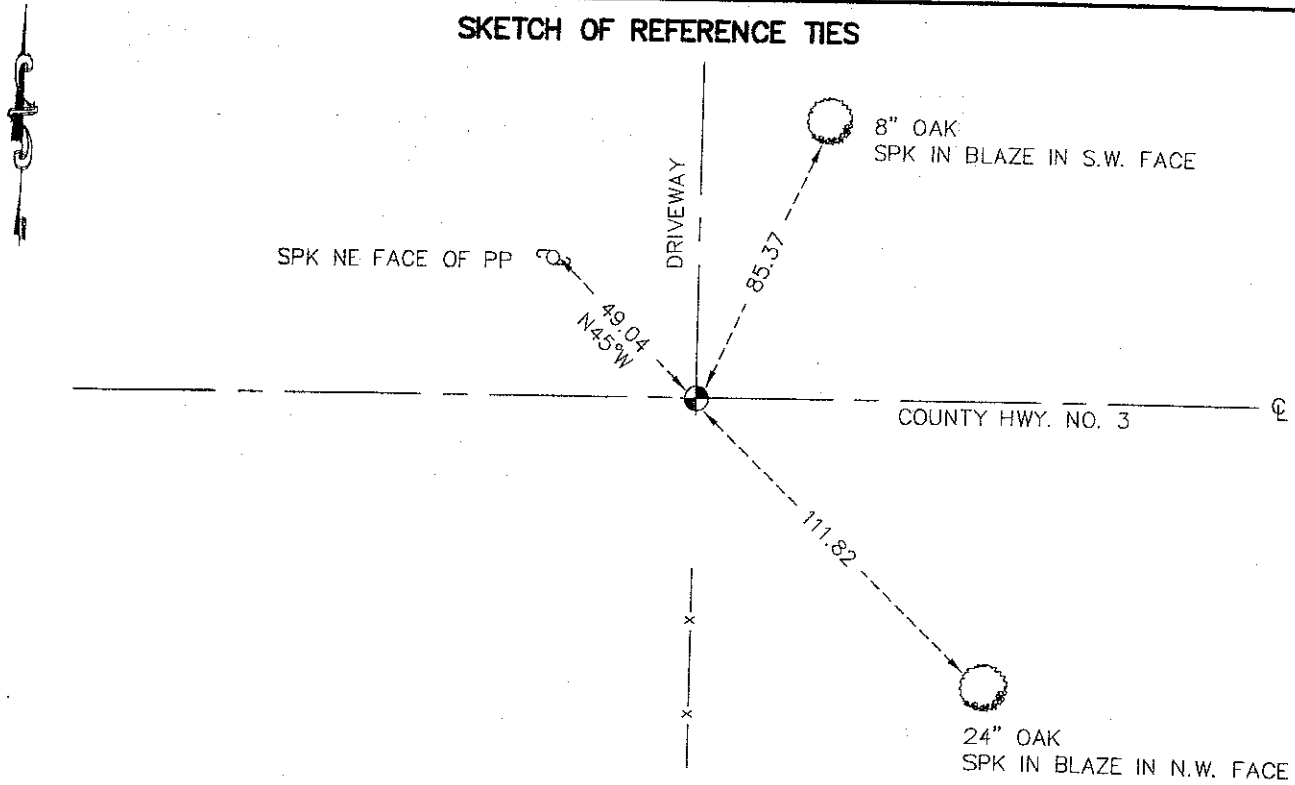
Northing= 202355.68

Easting= 393812.98

Note: NAD 1983, HARN 1996 Adjustment coordinates are NOT compatible with NAD 1983 coordinates

Note: 1 Meter=3937/1200 U.S. Survey Feet

SKETCH OF REFERENCE TIES



Statement of evidence relative to this corner location is on back of page.

I hereby certify that this document and the data contained herein was prepared by me or under my direct supervision.

Ernest G. Rud 3-17-2009
Signature Date

Registration No. 9808

Land Surveyor, Professional Engineer

County Surveyor, County Engineer

OFFICE OF THE COUNTY RECORDER

County of _____

I hereby certify that this document was filed in the County Recorder's office at _____ M. on the _____ day of _____ A.D., 20____

County Recorder _____

BY _____ Deputy

DOCUMENT NO. _____

N 1/4 CORNER SECTION 25, TOWNSHIP 41, RANGE 24

STATEMENT OF EVIDENCE

ALL OF THE ORIGINAL BEARING TREES ARE NOW GONE.

THERE IS NO RESURVEY DATA ON FILE FOR THIS CORNER.

IN FEBRUARY OF 1979, M.B. RUDE RAN A SURVEY ALONG THE SOUTH LINE OF SECTIONS 24, TOWNSHIP 41, RANGE 24 AND THE SOUTH LINE OF SECTION 19, TOWNSHIP 41, RANGE 23 AND LOCATED THE EXISTING MONUMENTS AND LINES OF OCCUPATION.

THIS CORNER FALLS AT THE INTERSECTION OF ROADS NORTH-EAST AND WEST.

M.B. RUDE MADE AN EXCAVATION WITH THE COUNTY BACKHOE, IT WAS 15 FEET SQUARE, 3 FEET DEEP AT THIS LOCATION. NO EVIDENCE WAS FOUND IN THE EXCAVATION.

IN 1904, THE TOWNSHIP FILED A ROAD ORDER FOR A 4 ROD ROAD FROM THE SOUTHWEST CORNER OF SECTION 23 TO THE SOUTHEAST CORNER OF SECTION 24. THIS ROAD ORDER STATES NO SURVEYOR WAS EMPLOYED FOR LAYING OUT THE ROAD.

IN 1913, THE TOWNSHIP FILED A FINAL ROAD ORDER FOR A 2 ROD CARTWAY LAID OUT FROM THE SOUTH QUARTER POST OF SECTION 24 RUNNING NORTH ON THE QUARTER LINE, 1/4 OF A MILE. NO SURVEYOR'S REPORT.

IN MARCH OF 1981, M.B. RUDE SET THIS CORNER AT THE INTERSECTION OF ROADS EAST-WEST AND NORTH. THIS LOCATION IS IN HARMONY WITH THE TOWNSHIP ROAD ORDERS AND FENCE LINE SOUTH EXTENDED NORTH AND ACCEPTED LINES OF OCCUPATION AND IS WITHIN 6 FEET OF A LINE AND SPLIT OF THE SOUTH LINE OF SECTION 24.

IN MARCH OF 2009 E.G. RUD AND SONS FOUND THIS MONUMENT AND ESTABLISHED KANABEC COUNTY COORDINATES ON THIS POSITION USING G.P.S. EQUIPMENT.