

# CERTIFICATE OF LOCATION OF GOVERNMENT CORNER

SOUTH 1/4 Corner of Section 25, Township 41, Range 24, 4TH P.M.

STATE OF MINNESOTA, County of KANABEC

4" X 17" CAST IRON MONUMENT

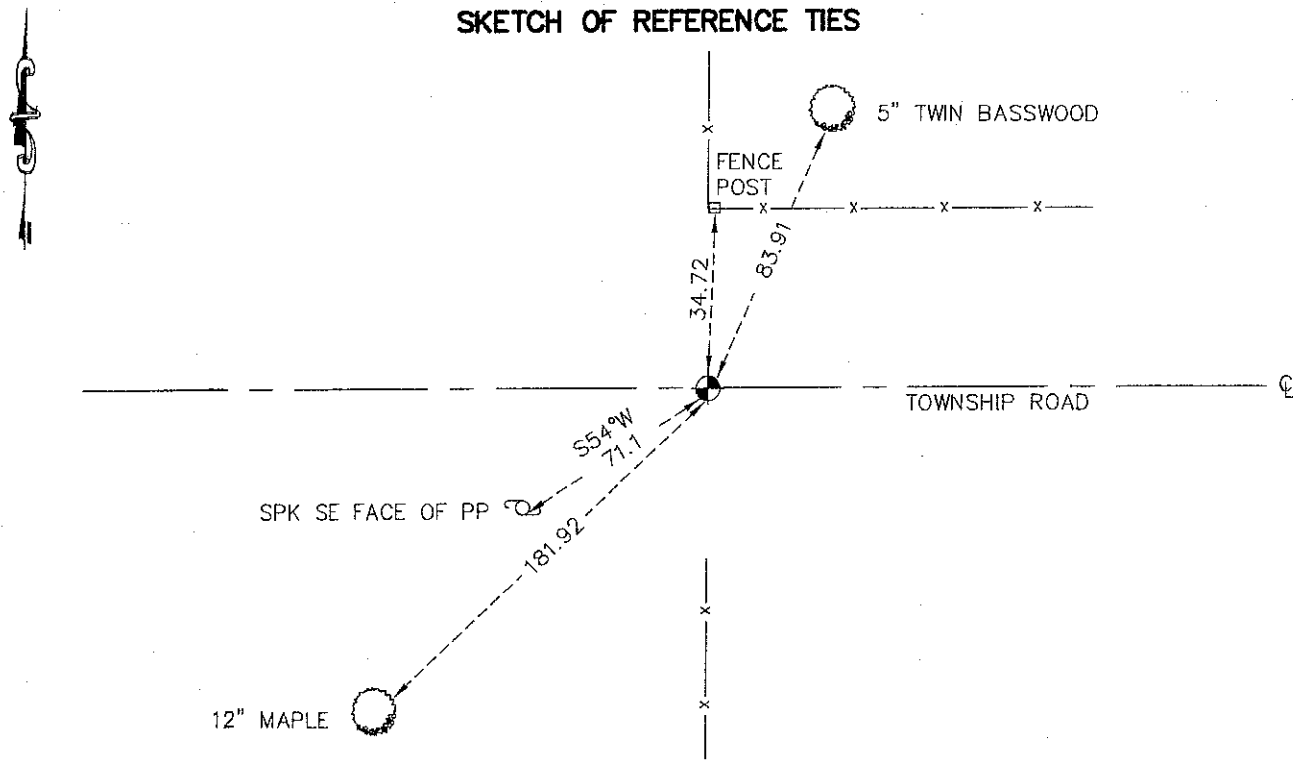
Kanabec County U.S. Survey Feet Coordinates  
NAD 1983, HARN 1996 Adjustment  
Obtained by RTK GPS Observation

Northing= 197204.83

Easting= 393924.82

Note: NAD 1983, HARN 1996 Adjustment  
coordinates are NOT compatible with  
NAD 1983 coordinates  
Note: 1 Meter=3937/1200 U.S. Survey Feet

### SKETCH OF REFERENCE TIES



TIES ARE TO SPK IN BLAZE IN NEAR FACE

Statement of evidence relative to this corner location is on back of page.

I hereby certify that this document and the data contained herein was prepared by me or under my direct supervision.

Ernest Blud  
Signature

3-17-2009  
Date

Registration No. 9808

- Land Surveyor,      [ ] Professional Engineer  
[ ] County Surveyor,    [ ] County Engineer

### OFFICE OF THE COUNTY RECORDER

County of \_\_\_\_\_

I hereby certify that this document was filed in the County Recorder's office at \_\_\_\_\_ M. on the

\_\_\_\_\_ day of \_\_\_\_\_ A.D., 20\_\_\_\_

County Recorder \_\_\_\_\_

BY \_\_\_\_\_ Deputy

**DOCUMENT NO.** \_\_\_\_\_

S 1/4 CORNER SECTION 25, TOWNSHIP 41, RANGE 24

**STATEMENT OF EVIDENCE**

ALL OF THE ORIGINAL BEARING TREES ARE NOW GONE.

THERE IS NO RESURVEY DATA ON FILE FOR THIS CORNER.

ON JUNE 8, 1983, M.B. RUDE RAN A SURVEY AROUND SECTION 25 AND LOCATED THE EXISTING MONUMENTS AND LINES OF OCCUPATION.

THIS CORNER FALLS ON AN EXISTING EAST-WEST ROAD IN A CUT SECTION, SO NO EXCAVATION WAS MADE.

THE CENTER LINE OF THE EXISTING EAST-WEST ROAD AND GOOD PROPERTY LINE FENCES NORTH AND SOUTH WAS ACCEPTED AS THE BEST AVAILABLE EVIDENCE OF THE ORIGINAL GOVERNMENT CORNER LOCATION.

M.B. RUDE SET A C.I.M. ON JUNE 10, 1983 AND IN MARCH OF 2009 E.G. RUD AND SONS FOUND THIS MONUMENT AND ESTABLISHED KANABEC COUNTY COORDINATES ON THIS POSITION USING G.P.S. EQUIPMENT.