

CERTIFICATE OF LOCATION OF GOVERNMENT CORNER

NORTHEAST Corner of Section 35, Township 41, Range 24, 4TH P.M.

STATE OF MINNESOTA, County of KANABEC

KANABEC COUNTY CAST ALUMINUM MONUMENT WITH MAGNETS

Kanabec County U.S. Survey Feet Coordinates
NAD 1983, HARN 1996 Adjustment
Obtained by RTK GPS Observation

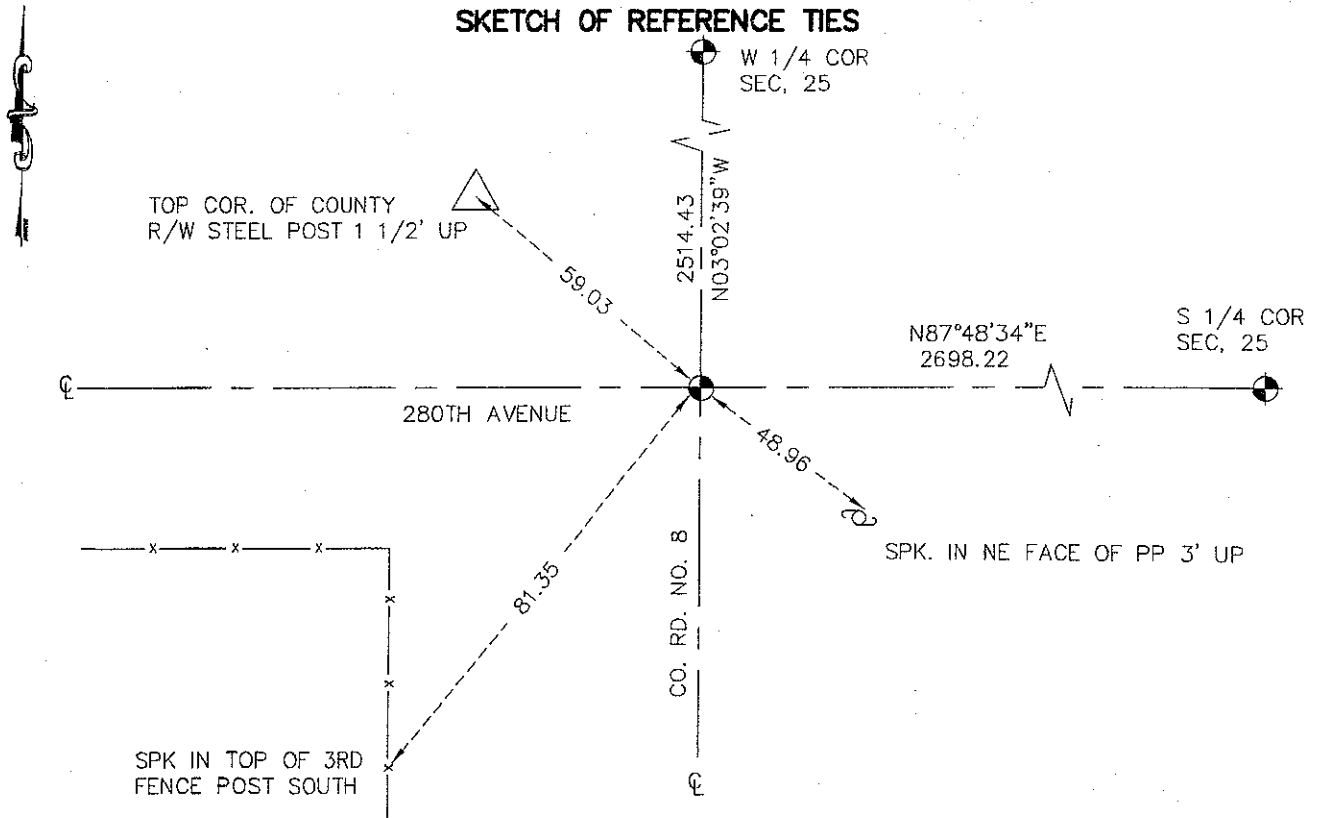
Northing= 197101.70

Easting= 391228.57

Note: NAD 1983, HARN 1996 Adjustment
coordinates are NOT compatible with
NAD 1983 coordinates

Note: 1 Meter=3937/1200 U.S. Survey Feet

SKETCH OF REFERENCE TIES



Statement of evidence relative to this corner location is on back of page.

I hereby certify that this document and the data contained herein was prepared by me or under my direct supervision.

Ernest G Rud 3-17-2009
Signature Date

Registration No. 9808

Land Surveyor, Professional Engineer

County Surveyor, County Engineer

OFFICE OF THE COUNTY RECORDER

County of _____

I hereby certify that this document was filed in the County Recorder's office at _____ M. on the _____ day of _____ A.D., 20____

County Recorder _____

BY _____ Deputy

BY _____ Deputy

DOCUMENT NO. _____

NE CORNER SECTION 35, TOWNSHIP 41, RANGE 24

STATEMENT OF EVIDENCE

THE ORIGINAL CORNER WAS SET BY DEPUTY SURVEYOR ISAAC BANKER IN DEC 22, 1855 AND 4 ASPEN TREES WERE USED AS BEARING TREES. NO VISIBLE EVIDENCE OF THE CORNER POST OR BEARING TREES REMAINS TODAY.

ON MARCH 19, 1925 GEORGE H. JENKS SET A STONE MARKED WITH AN "X" AT THIS CORNER AND RECORDED IT IN THE BOOK OF CERTIFICATES ON PAGE 61.

ON JULY 18, 1975, M.B. RUDE FOUND A 1/2" BOLT INSIDE A 2 3/4" PIPE DOWN 18" AND UNDER THE PIPE FOUND A SANDSTONE WITH A CHISELED "X".

M.B. RUDE SET A CAST ALUMINUM MONUMENT.

IN MARCH OF 2009 E.G. RUD AND SONS FOUND THIS MONUMENT AND ESTABLISHED KANABEC COUNTY COORDINATES ON THIS POSITION USING G.P.S. EQUIPMENT.