

Index No. 4124049

CERTIFICATE OF LOCATION OF GOVERNMENT CORNER

EAST QUARTER Corner of Section 35, Township 41, Range 24, 4TH P.M.

STATE OF MINNESOTA, County of KANABEC

At the corner location shown on the sketch:
On 06/ /2003 Found a Kanabec County Monument.

Kanabec County U.S. Survey Feet Coordinates
NAD 1983, HARN 1996 Adjustment
Obtained by RTK GPS Observation

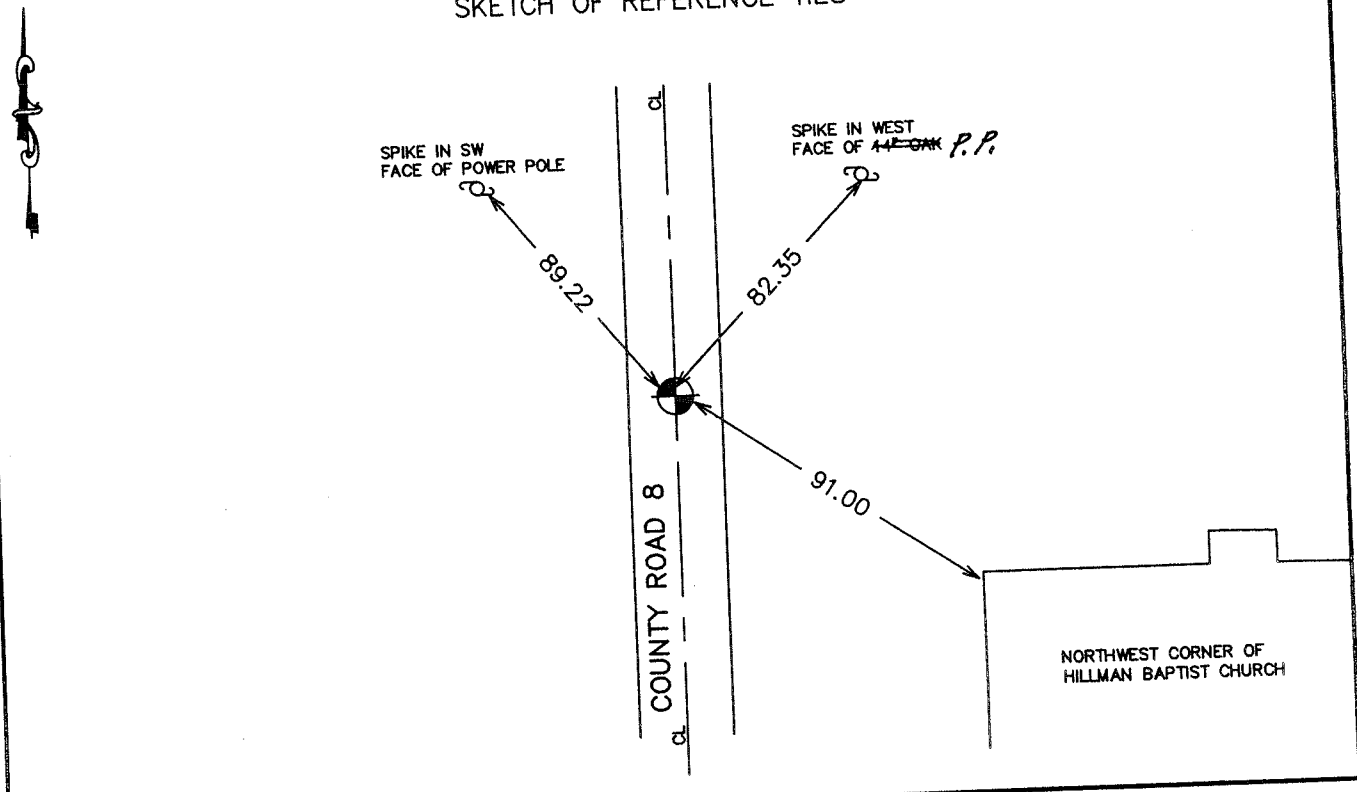
Northing= 194593.925

Easting= 391228.309

Note: NAD 1983, HARN 1996 Adjustment
coordinates are NOT compatible with
NAD 1983 coordinates

Note: 1 Meter=3937/1200 U.S. Survey Feet

SKETCH OF REFERENCE TIES



Statement of evidence relative to this corner location is on back of page.

I hereby certify that this document and the data contained herein was prepared by me or under my direct supervision.

Ernest J. Reed
Signature

6-30-2004
Date

Registration No. 9808

Land Surveyor, Professional Engineer

OFFICE OF THE COUNTY RECORDER

County of _____

I hereby certify that this document was filed in the County Recorder's office at _____ M. on the _____ day of _____ A.D., 20____

County Recorder _____

BY _____ Deputy

DOCUMENT NO. _____

STATEMENT OF EVIDENCE
(FROM TIE SHEET 533)

All of the original bearing trees are now gone.

In 1903, Mr. John Nelson, the County Surveyor, made a road survey on the east line of Section 35, but his records do not show if he found or set anything at the East Quarter corner.

I found a bolt spike in the center line of a blacktop road. This bolt spike fits well with three feet split between the Northeast and Southeast corners of Section 35. Using this location and the stone found at the West Quarter corner, we fit a stone monument with an "X" found at the center of section, set by John Nelson in 1904, within 1.5 feet.

This bolt spike location also fits a very old occupation line which runs east from the quarter corner.

We accepted the bolt spike as the best available evidence of the original corner location and replaced it with a 2 3/4" by 8" cast iron monument.

In June of 2003, we found this monument and established Kanabec County Coordinates on this position using G.P.S. equipment. After County Road 8 was reconstructed and blacktopped we reset this monument in the same location and took new ties in June 2004.