

# CERTIFICATE OF LOCATION OF GOVERNMENT CORNER

S 1/4 Corner of Section 35, Township 41, Range 24, 4TH P.M.

STATE OF MINNESOTA, County of KANABEC

At the corner location shown on the sketch:

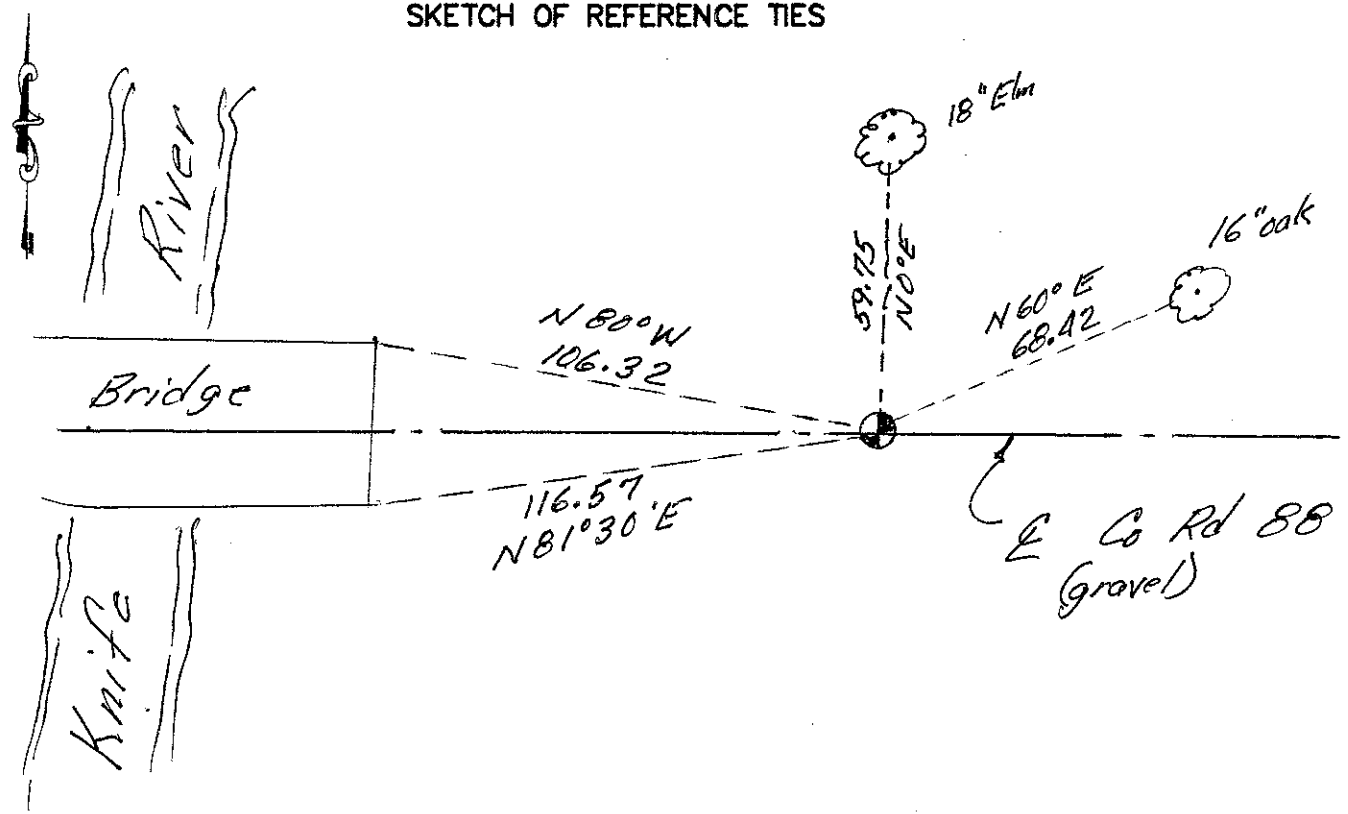
*Found a cast aluminum monument down 18" in E of gravel road. Set 1/2" x 14" iron pipe on top of C.A.M.*

Kanabec County U.S. Survey Feet Coordinates  
NAD 1983, HARN 1996 Adjustment  
Obtained by RTK GPS Observation

Northing=192096.83  
Easting=388574.31

Note: NAD 1983, HARN 1996 Adjustment coordinates are NOT compatible with NAD 1983 coordinates  
Note: 1 Meter=3937/1200 U.S. Survey Feet

### SKETCH OF REFERENCE TIES



Statement of evidence relative to this corner location is on back of page.

I hereby certify that this document and the data contained herein was prepared by me or under my direct supervision.

Ernest E. Rud 11-13-12  
Signature Date

Registration No. Minn No. 9808

- Land Surveyor,  Professional Engineer
- County Surveyor,  County Engineer

### OFFICE OF THE COUNTY RECORDER

County of \_\_\_\_\_

I hereby certify that this document was filed in the County Recorder's office at \_\_\_\_\_ M. on the \_\_\_\_\_ day of \_\_\_\_\_ A.D., 20\_\_\_\_

County Recorder \_\_\_\_\_

BY \_\_\_\_\_ Deputy

DOCUMENT NO. \_\_\_\_\_

STATEMENT OF EVIDENCE: SOUTH QUARTER CORNER 35-41-24

All of the original bearing trees are gone.

In 1904, John Nelson, the County Surveyor, made a survey in Section 35 and this record shows a stone at this location.

On June 20, 1978, M.B. Rude made an excavation with the backhoe at 40.5 chains West of the Southeast corner in centerline of East-West road per John Nelson's records. At 3 feet below the surface he found a rock with no markings. Below the rock he found a very rotten pointed wood stake.

He off-set the wooden stake location and backfilled the excavation and set a 2 ¾" by 16" Cast Iron Monument on top of the wood stake 4" below the surface.

On November 13, 2012 E.G. Rud & Sons found this Cast Iron Monument down 18" in centerline of gravel road. A ½" by 14" iron pipe was set on top with a plastic cap marked RLS Number "9808". Kanabec County coordinates were established on this position and additional ties taken.