

# CERTIFICATE OF LOCATION OF GOVERNMENT CORNER

SOUTHEAST Corner of Section 34, Township 41, Range 24, 4TH P.M.

STATE OF MINNESOTA, County of KANABEC

At the corner location shown on the sketch:

IN 2006 FOUND THIS CORNER  
AND ESTABLISHED KANABEC COUNTY COORDINATES ON ITS LOCATION.

Kanabec County U.S. Survey Feet Coordinates  
NAD 1983, HARN 1996 Adjustment  
Obtained by RTK GPS Observation

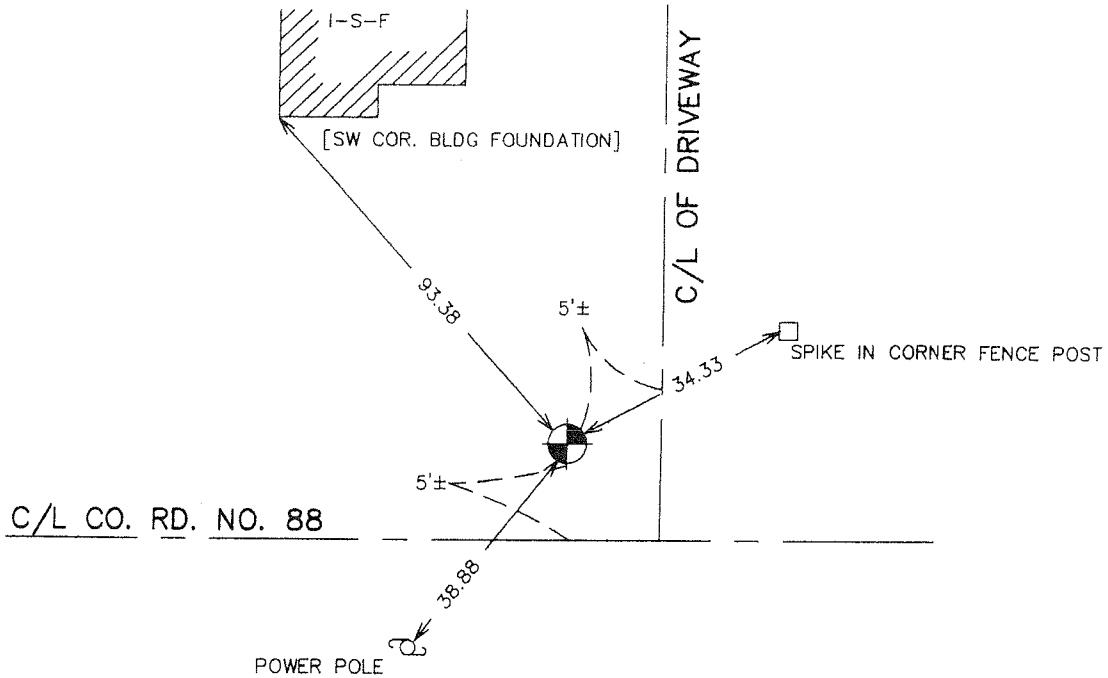
Northing= 192119.06

Easting= 385902.91

Note: NAD 1983, HARN 1996 Adjustment  
coordinates are NOT compatible with  
NAD 1983 coordinates

Note: 1 Meter=3937/1200 U.S. Survey Feet

## SKETCH OF REFERENCE TIES



Statement of evidence relative to this corner location is on back of page.

I hereby certify that this document and the data contained herein was prepared by me or under my direct supervision.

Ernest Ellud  
Signature

10-12-2006  
Date

Registration No. Minn No 9808

- Land Surveyor,       Professional Engineer
- County Surveyor,     County Engineer

## OFFICE OF THE COUNTY RECORDER

County of \_\_\_\_\_

I hereby certify that this document was filed in the County Recorder's office at \_\_\_\_\_ M. on the

\_\_\_\_\_ day of \_\_\_\_\_ A.D., 20\_\_

County Recorder \_\_\_\_\_

BY \_\_\_\_\_ Deputy

DOCUMENT NO. \_\_\_\_\_

**STATEMENT OF EVIDENCE**

ALL OF THE ORIGINAL BEARING TREES ARE NOW GONE.

THERE IS A SURVEY ON FILE BY JOHN NELSON IN SECTION 35, DATED 1904.

IN JUNE OF 1978, M.B. RUDE FOUND THE SOUTH QUARTER, THE WEST QUARTER CORNER AND THE CENTER OF SECTION SET BY JOHN NELSON AND HIS MEASUREMENTS AROUND SECTION 35 AGREED WITH M.B. RUDE'S VERY WELL.

IN JULY OF 1981, AN EXCAVATION WAS MADE WITH A BACKHOE AT THIS CORNER BUT COULD NOT FIND ANY EVIDENCE. IT APPEARS THE ROAD HAS BEEN CUT AND ALL EVIDENCE OF THE CORNER IS GONE.

THIS CORNER WAS SET FROM DISTANCES SHOWN IN THE JOHN NELSON SURVEY OF 1904 AND ACCEPTED THIS LOCATION AS THE BEST AVAILABLE EVIDENCE AND A 4" BY 17" CAST IRON MONUMENT WAS PLACED AT THIS CORNER.

IN FEBRUARY 2006 E.G. RUD AND SONS RAN A SURVEY ALONG THIS CORRECTION LINE, FOUND THE MONUMENT, VERIFIED TIES AND ESTABLISH KANABEC COUNTY COORDINATES ON THIS POSITION USING G.P.S. EQUIPMENT.