

# CERTIFICATE OF LOCATION OF GOVERNMENT CORNER

SOUTHEAST Corner of Section 33, Townshi.p 41, Range 24, 4TH P.M.

STATE OF MINNESOTA, County of KANABEC

At the corner location shown on the sketch:  
SET THIS MONUMENT  
AND ESTABLISHED G.P.S. COORDINATES ON ITS LOCATION.

Kanabec County U.S. Survey Feet Coordinates  
NAD 1983, HARN 1996 Adjustment  
Obtained by RTK GPS Observation

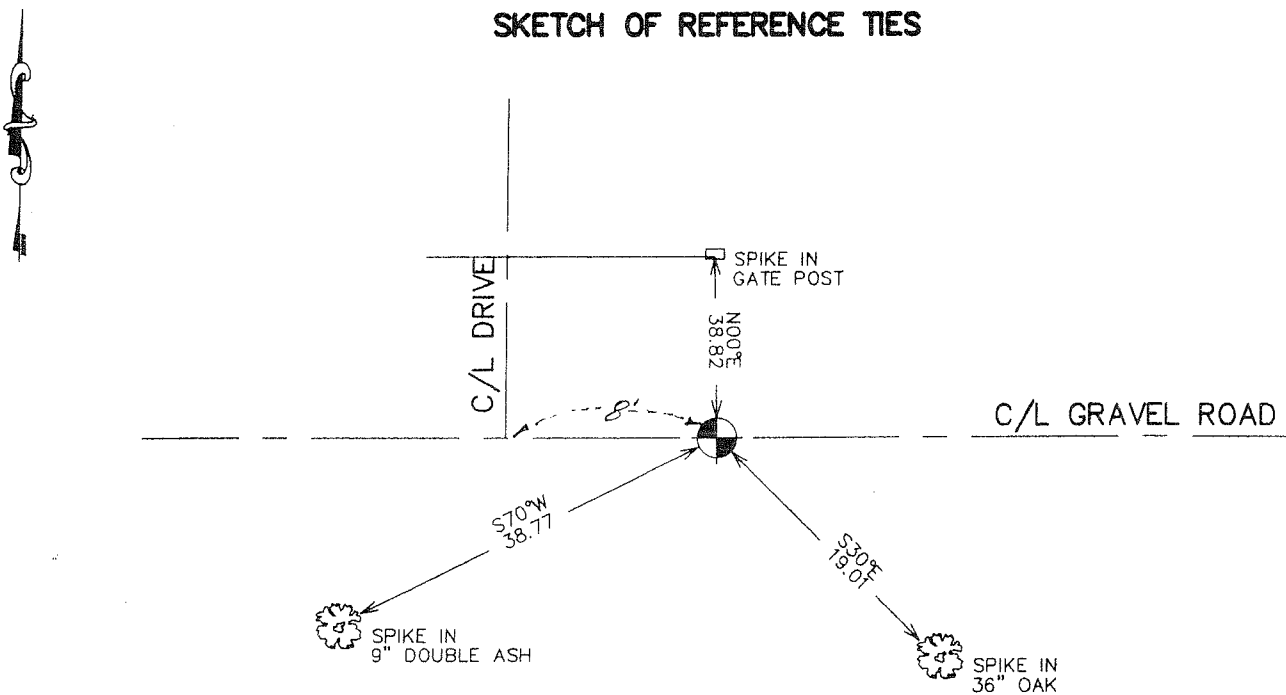
Northing= 192146.77

Easting= 380631.79

Note: NAD 1983, HARN 1996 Adjustment  
coordinates are NOT compatible with  
NAD 1983 coordinates

Note: 1 Meter=3937/1200 U.S. Survey Feet

## SKETCH OF REFERENCE TIES



Statement of evidence relative to this corner location is on back of page.

I hereby certify that this document and the data contained herein was prepared by me or under my direct supervision.

*Ernest Blud*  
Signature

10-12-2006  
Date

Registration No. 9808

Land Surveyor,  Professional Engineer  
 County Surveyor,  County Engineer

## OFFICE OF THE COUNTY RECORDER

County of \_\_\_\_\_

I hereby certify that this document was filed in the County Recorder's office at \_\_\_\_\_ M. on the

\_\_\_\_\_ day of \_\_\_\_\_ A.D., 20\_\_\_\_

County Recorder \_\_\_\_\_

BY \_\_\_\_\_ Deputy

DOCUMENT NO. \_\_\_\_\_

SOUTHEAST CORNER SECTION 33, T41, R24

**STATEMENT OF EVIDENCE**

ALL OF THE ORIGINAL BEARING TREES ARE NOW GONE.

THERE IS A TOWN ROAD ORDER SURVEY BY CHARLES PETERSON IN 1916, FOR AN EAST-WEST TOWNSHIP ROAD, BUT NO RECORD OF WHAT WAS FOUND OR SET AT THIS CORNER.

IN JULY OF 1981, M.B. RUDE RAN A SURVEY ALONG THE TOWNSHIP LINE FROM THE SOUTHEAST CORNER OF SECTION 33 TO THE SOUTHWEST CORNER OF SECTION 31.

AN EXCAVATION WAS MADE WITH A BACKHOE AND THE EXCAVATION WAS 25 FEET LONG EAST-WEST AND 12 FEET WIDE NORTH-SOUTH IN THE OLD ROAD BED AT THE PROPORTIONAL DISTANCE. NO EVIDENCE WAS FOUND IN THE EXCAVATION.

THE ONLY LINES OF OCCUPATION IS THE OLD EAST-WEST TOWNSHIP ROAD.

THIS CORNER WAS SET IN THE CENTER OF THE OLD TOWNSHIP ROAD AND AT A PROPORTIONAL DISTANCE BETWEEN THE SOUTHEAST CORNER OF SECTION 34 AND SOUTHWEST CORNER OF SECTION 31.

IN FEBRUARY 2006 E.G. RUD AND SONS RAN A SURVEY ALONG THIS CORRECTION LINE. THIS CORNER WAS LOCATED, NEW TIES TAKEN AND KANABEC COUNTY COORDINATES ESTABLISHED USING G.P.S. EQUIPMENT.