

CERTIFICATE OF LOCATION OF GOVERNMENT CORNER

SOUTH QUARTER Corner of Section 33, Township 41, Range 24, 4TH P.M.

STATE OF MINNESOTA, County of KANABEC

At the corner location shown on the sketch:
 SET THIS POINT
 AND ESTABLISHED G.P.S. COORDINATES ON ITS LOCATION.

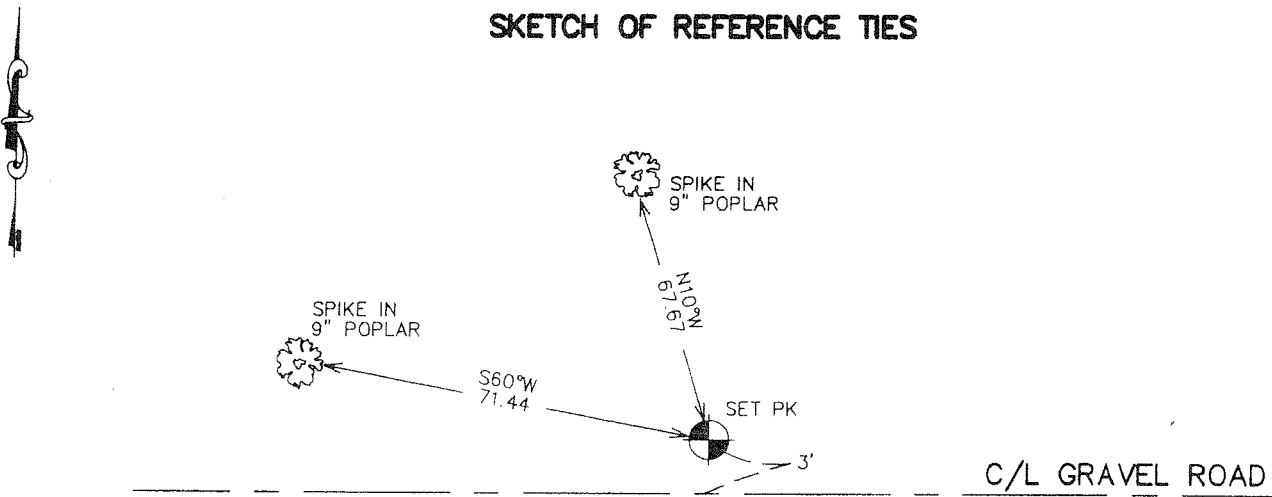
Kanabec County U.S. Survey Feet Coordinates
 NAD 1983, HARN 1996 Adjustment
 Obtained by RTK GPS Observation

Northing= 192171.42
 Easting= 377996.30

Note: NAD 1983, HARN 1996 Adjustment
 coordinates are NOT compatible with
 NAD 1983 coordinates

Note: 1 Meter=3937/1200 U.S. Survey Feet

SKETCH OF REFERENCE TIES



Statement of evidence relative to this corner location is on back of page.

I hereby certify that this document and the data contained herein was prepared by me or under my direct supervision.

Ernest M. Reed
 Signature

10-12-2006
 Date

Registration No. 9808

- Land Surveyor, Professional Engineer
 County Surveyor, County Engineer

OFFICE OF THE COUNTY RECORDER

County of _____

I hereby certify that this document was filed in the County Recorder's office at _____ M. on the _____ day of _____ A.D., 20____

County Recorder _____

BY _____ Deputy

DOCUMENT NO. _____

SOUTH QUARTER CORNER SECTION 33, T41, R24

STATEMENT OF EVIDENCE

ALL OF THE ORIGINAL BEARING TREES ARE NOW GONE.

THERE IS A TOWN ROAD ORDER SURVEY BY CHARLES PETERSON IN 1916, FOR AN EAST-WEST TOWNSHIP ROAD, BUT NO RECORD OF WHAT WAS FOUND OR SET AT THIS CORNER.

IN JULY OF 1981, M.B. RUDE RAN A SURVEY ALONG THE TOWNSHIP LINE FROM THE SOUTHEAST CORNER OF SECTION 33 TO THE SOUTHWEST CORNER OF SECTION 31.

ON JULY 23, 1981, AN EXCAVATION WAS MADE WITH A D7 CAT IN THE EAST-WEST ROAD BED AT THE PROMOTIONAL MEASUREMENT LOCATION. THE EXCAVATION WAS 25 FEET LONG EAST AND WEST AND 12 FEET WIDE NORTH AND SOUTH. NO EVIDENCE WAS FOUND IN THE EXCAVATION.

THE ONLY LINES OF OCCUPATION IS THE OLD EAST-WEST TOWNSHIP ROAD.

THIS CORNER WAS SET IN THE CENTER OF THE OLD TOWNSHIP ROAD AND AT A PROPORTIONAL DISTANCE BETWEEN THE SOUTHEAST CORNER OF SECTION 34 AND THE SOUTHWEST CORNER OF SECTION 31.

IN FEBRUARY 2006 E.G. RUD AND SONS RAN A SURVEY ALONG THIS CORRECTION LINE. THE C.I.M. SET BY M.B. RUDE COULD NOT BE FOUND NOR ANY OF THE TIES. A NEW POINT WAS SET BY THE MATHEMATICAL INFORMATION FROM M.B. RUDE'S SURVEY, TIES TAKEN AND KANABEC COUNTY COORDINATES WERE ESTABLISHED USING G.P.S EQUIPMENT.