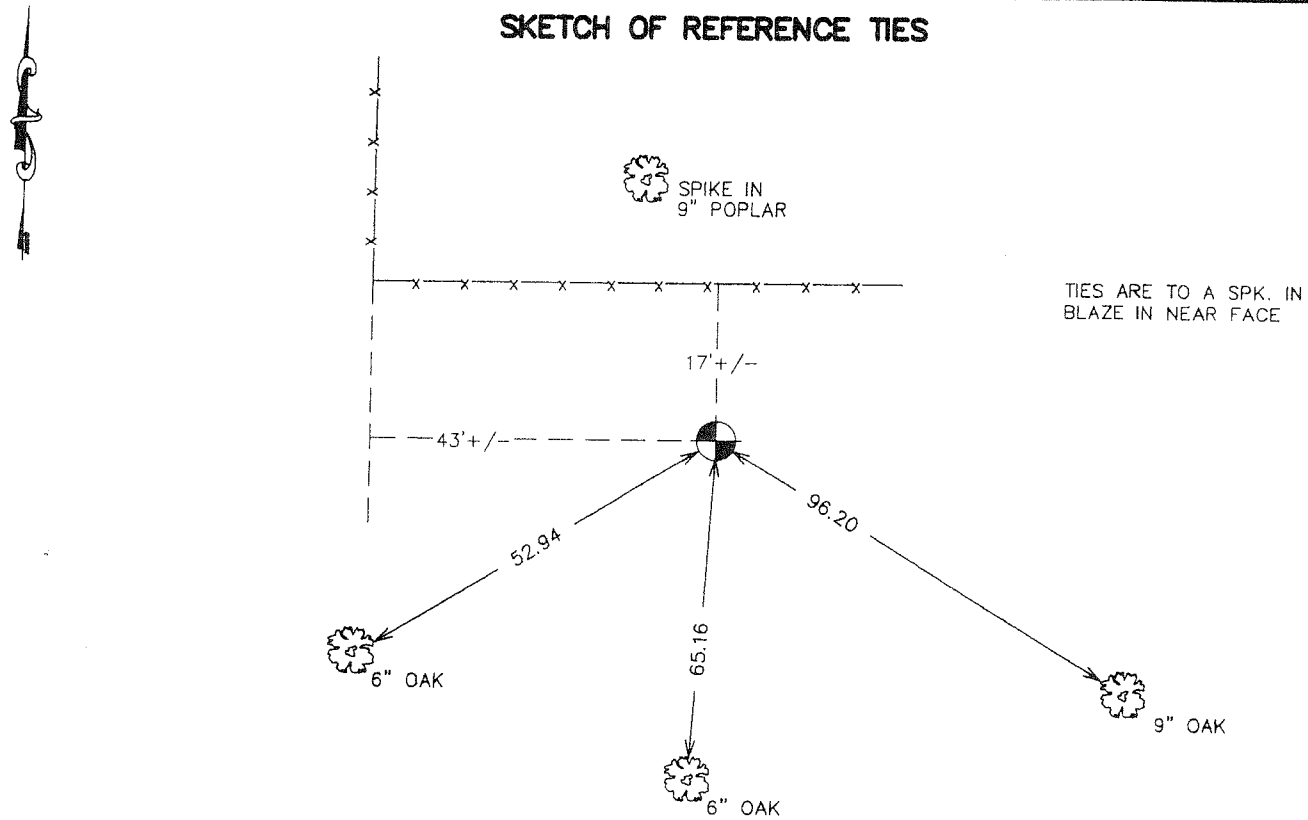


CERTIFICATE OF LOCATION OF GOVERNMENT CORNER

SOUTHEAST Corner of Section 31, Townshi.p 41, Range 24, 4TH P.M.
 STATE OF MINNESOTA, County of KANABEC

At the corner location shown on the sketch: FOUND THIS MONUMENT AND ESTABLISHED G.P.S. COORDINATES ON ITS LOCATION.	Kanabec County U.S. Survey Feet Coordinates NAD 1983, HARN 1996 Adjustment Obtained by RTK GPS Observation Northing= <u>192171.44</u> Easting= <u>370089.57</u> Note: NAD 1983, HARN 1996 Adjustment coordinates are NOT compatible with NAD 1983 coordinates Note: 1 Meter=3937/1200 U.S. Survey Feet
---	--

SKETCH OF REFERENCE TIES



Statement of evidence relative to this corner location is on back of page.

I hereby certify that this document and the data contained herein was prepared by me or under my direct supervision.

Ernest Shud 10-12-2006
Signature Date

Registration No. Minn No 9808

- Land Surveyor, Professional Engineer
 County Surveyor, County Engineer

OFFICE OF THE COUNTY RECORDER

County of _____

I hereby certify that this document was filed in the County Recorder's office at _____ M. on the _____ day of _____ A.D., 20____

County Recorder _____

BY _____ Deputy

DOCUMENT NO. _____

SOUTHEAST CORNER SECTION 31, T41, R24

STATEMENT OF EVIDENCE

ALL OF THE ORIGINAL BEARING TREES ARE NOW GONE.

THERE IS A TOWN ROAD ORDER ON FILE FOR A TOWN ROAD STARTING AT THE NORTHWEST CORNER OF SECTION 2 RUNNING EAST ON THE TOWNSHIP LINE TO THE NORTHEAST CORNER OF SECTION 1, DATED 1938. TESTIMONY OF THE AREA RESIDENTS SAY THIS ROAD WAS NEVER BUILT, BUT WAS CLEARED BY W.P.A. CREWS IN 1939 AND 1940. THERE IS EVIDENCE OF AN OLD NORTH-SOUTH ROAD SOUTH OF THIS CORNER.

IN JULY OF 1981, M.B. RUDE RAN A SURVEY ALONG THE TOWNSHIP LINE FROM THE SOUTHEAST CORNER OF SECTION 33 TO THE SOUTHWEST CORNER OF SECTION 31.

WE SET THIS CORNER ON LINE AND AT A PROPORTIONAL DISTANCE BETWEEN THE SOUTHWEST CORNER OF SECTION 31 AND THE SOUTHEAST CORNER OF SECTION 32.

IN FEBRUARY 2006 E.G. RUD AND SONS RAN A SURVEY ALONG THIS CORRECTION LINE AND ESTABLISHED KANABEC COUNTY COORDINATES ON THIS POSITION.