

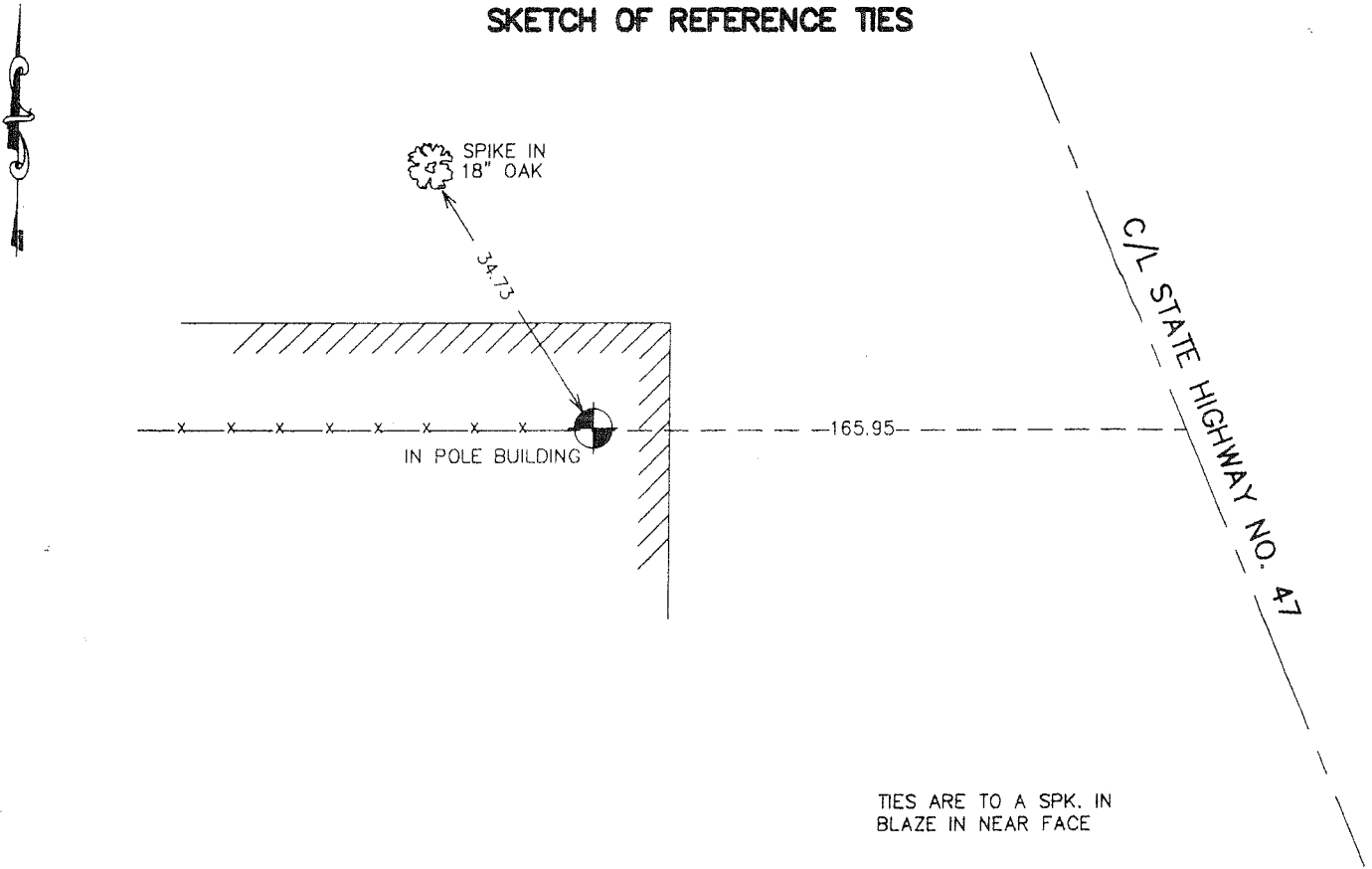
CERTIFICATE OF LOCATION OF GOVERNMENT CORNER

SOUTHWEST Corner of Section 31, Townshi.p 41, Range 24, 4TH P.M.
STATE OF MINNESOTA, County of KANABEC

At the corner location shown on the sketch:
ESTABLISHED G.P.S. COORDINATES ON ITS LOCATION.

Kanabec County U.S. Survey Feet Coordinates
NAD 1983, HARN 1996 Adjustment
Obtained by RTK GPS Observation
Northing= 192155.90
Easting= 364620.72
Note: NAD 1983, HARN 1996 Adjustment
coordinates are NOT compatible with
NAD 1983 coordinates
Note: 1 Meter=3937/1200 U.S. Survey Feet

SKETCH OF REFERENCE TIES



TIES ARE TO A SPK. IN
BLAZE IN NEAR FACE

Statement of evidence relative to this corner location is on back of page.

I hereby certify that this document and the data contained herein was prepared by me or under my direct supervision.

Ernest W. Reed 10-12-2006
Signature Date

Registration No. 9808

Land Surveyor, Professional Engineer

County Surveyor, County Engineer

OFFICE OF THE COUNTY RECORDER

County of _____

I hereby certify that this document was filed in the County Recorder's office at _____ M. on the _____ day of _____ A.D., 20____

County Recorder _____

BY _____ Deputy

DOCUMENT NO. _____

SOUTHWEST CORNER SECTION 31, T41, R24

STATEMENT OF EVIDENCE

ALL OF THE ORIGINAL BEARING TREES ARE NOW GONE.

THE MINNESOTA DEPARTMENT OF TRANSPORTATION'S SURVEY RECORDS SHOW A 3" BY 3" SQUARE POST WAS FOUND AT THIS CORNER IN THEIR SURVEY FOR HIGHWAY NO. 47 AT 166.6 FEET WEST OF DEPARTMENT OF TRANSPORTATION'S STATION 964+23.1.

ON JULY 22, 1981, M.B. RUDE FOUND A 1/2" IRON PIPE AND CHIPS OF WOOD POST AT 165.95 FEET WEST OF DEPARTMENT OF TRANSPORTATION'S 964+23.1.

THE 1/2" IRON PIN WAS ACCEPTED AS THE PERPETUATED LOCATION OF THE ORIGINAL CORNER AND A 4" BY 17" CAST ALUMINUM MONUMENT WAS SET TO REPLACE THE 1/2" IRON PIPE.

IN FEBRUARY 2006 E.G. RUD AND SONS RAN A SURVEY ALONG THIS CORRECTION LINE. A POLE BUILDING HAS NOW BEEN CONSTRUCTED OVER THE MONUMENT SET BY M.B. RUDE. THEREFORE KANABEC COUNTY COORDINATES WERE ESTABLISHED ON THIS POSITION USING THE MATHEMATICAL INFORMATION ON M.B. RUDE SURVEY DATED JULY 31, 1981.