

# CERTIFICATE OF LOCATION OF GOVERNMENT CORNER

WEST 1/4 Corner of Section 31, Township 41, Range 24, 4TH P.M.

STATE OF MINNESOTA, County of KANABEC

1/2" IRON PIPE ON TOP OF D.O.T. CONC. MONUMENT

Kanabec County U.S. Survey Feet Coordinates  
 NAD 1983, HARN 1996 Adjustment  
 Obtained by RTK GPS Observation

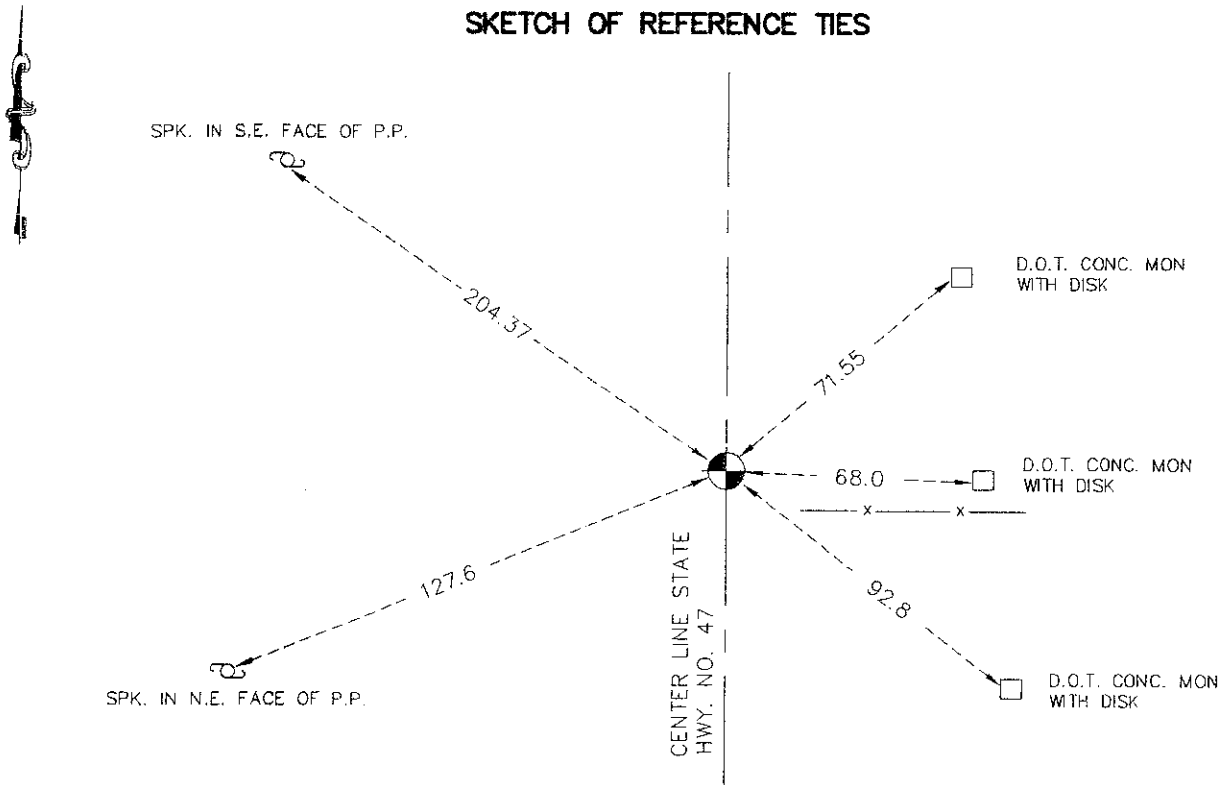
Northing= 194796.40

Easting= 364626.34

Note: NAD 1983, HARN 1996 Adjustment  
 coordinates are NOT compatible with  
 NAD 1983 coordinates

Note: 1 Meter=3937/1200 U.S. Survey Feet

### SKETCH OF REFERENCE TIES



TIES ARE TO SPIKE IN BLAZE IN NEAR FACE OF TREES UNLESS OTHERWISE NOTED.

Statement of evidence relative to this corner location is on back of page.

I hereby certify that this document and the data contained herein was prepared by me or under my direct supervision.

*Ernest J. Hub*  
 Signature

6-10-2009  
 Date

Registration No. 9808

Land Surveyor,  Professional Engineer

County Surveyor,  County Engineer

### OFFICE OF THE COUNTY RECORDER

County of \_\_\_\_\_

I hereby certify that this document was filed in the County Recorder's office at \_\_\_\_\_ M. on the \_\_\_\_\_ day of \_\_\_\_\_ A.D., 20\_\_\_\_

County Recorder \_\_\_\_\_

BY \_\_\_\_\_ Deputy

DOCUMENT NO. \_\_\_\_\_

W 1/4 CORNER SECTION 31, TOWNSHIP 41, RANGE 23

**STATEMENT OF EVIDENCE**

ALL OF THE ORIGINAL BEARING TREES ARE NOW GONE.

THE MINNESOTA DEPARTMENT OF TRANSPORTATION'S SURVEY RECORDS FOR STATE HIGHWAY NO. 47 SHOW A FIELD STONE IN PLACE AT THIS CORNER IN THE CENTER OF THE NORTH-SOUTH ROAD AND IN LINE WITH TIMBER LINE EAST AT STATION 999+73.3

IN JULY OF 1981, M.B. RUDE RAN A SURVEY AROUND SECTIONS 30 AND 31 AND LOCATED THE EXISTING LINES OF OCCUPATION AND MONUMENTATION.

THE MINNESOTA DEPARTMENT OF TRANSPORTATION'S RECORDS SHOW THAT THE FIELD STONE WAS REPLACED WITH A CONCRETE MONUMENT AT STATION 999+77.3 AFTER GRADING OF HIGHWAY NO. 47

ON JULY 24, 1981, M.B. RUDE FOUND THE DEPARTMENT OF TRANSPORTATION'S CONCRETE MONUMENT AT STATION 999+77.3 ABOUT 10" BELOW THE SURFACE.

HE ACCEPTED THE CONCRETE MONUMENT AS THE PERPETUATED LOCATION OF THE ORIGINAL CORNER AND SET A 9" BY 1/2" IRON PIPE ON TOP OF THE CONCRETE MONUMENT.

IN MARCH OF 2009, E.G. RUD AND SONS ESTABLISHED KANABEC COUNTY COORDINATES ON THIS MONUMENT USING G.P.S. EQUIPMENT.